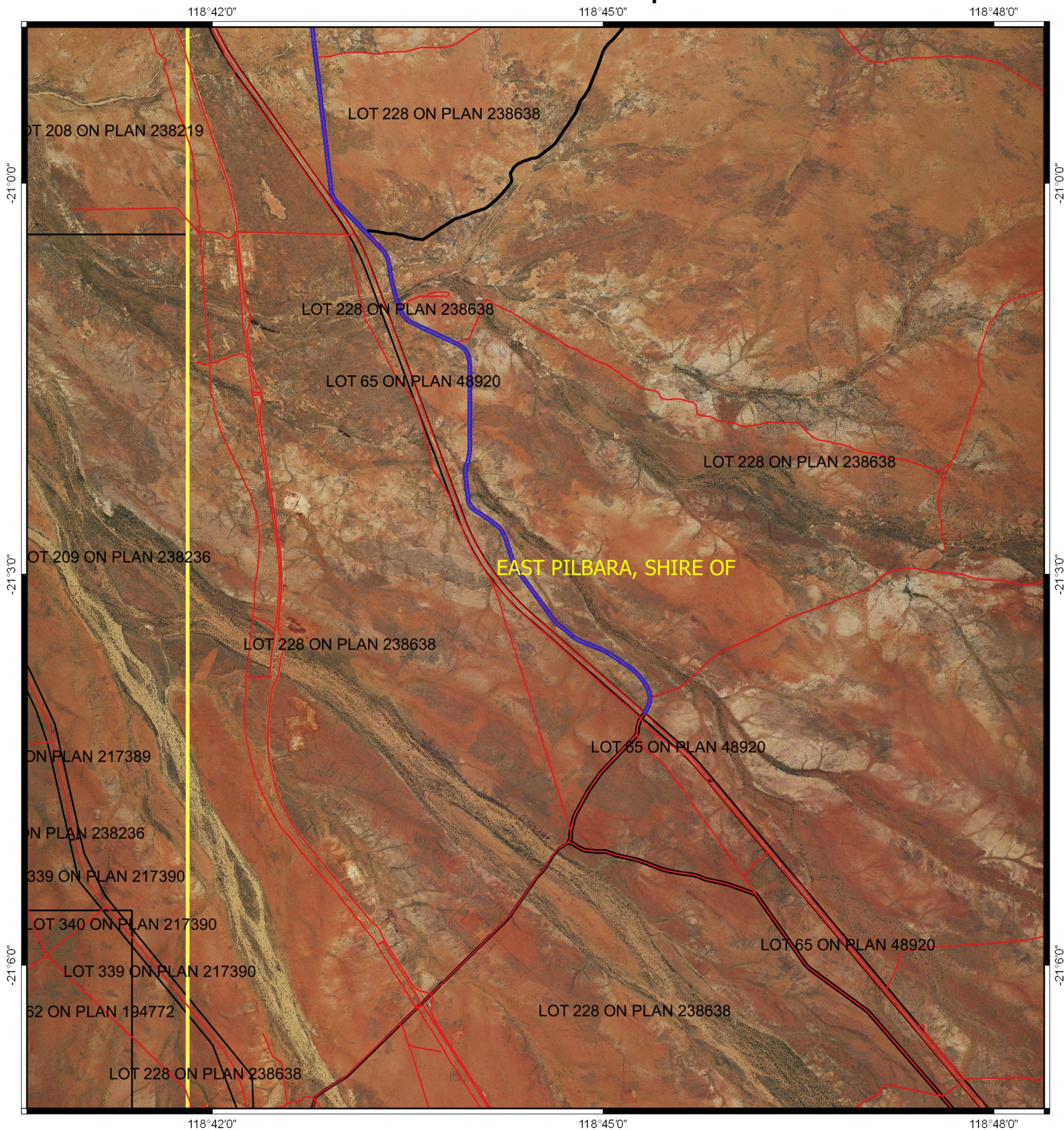



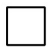


CPS 7172/1 - Map c



Legend

-  Areas applied to clear
 -  Roads
 -  LGA
 -  Cadastre
- Virtual Mosaic (LGATE-V001)



1:60,000

MGA 94
Geocentric Datum of Australia 1994

.....Date.....
James Widenbar

Officer with delegated authority under Section 20
of the Environmental Protection Act 1986

