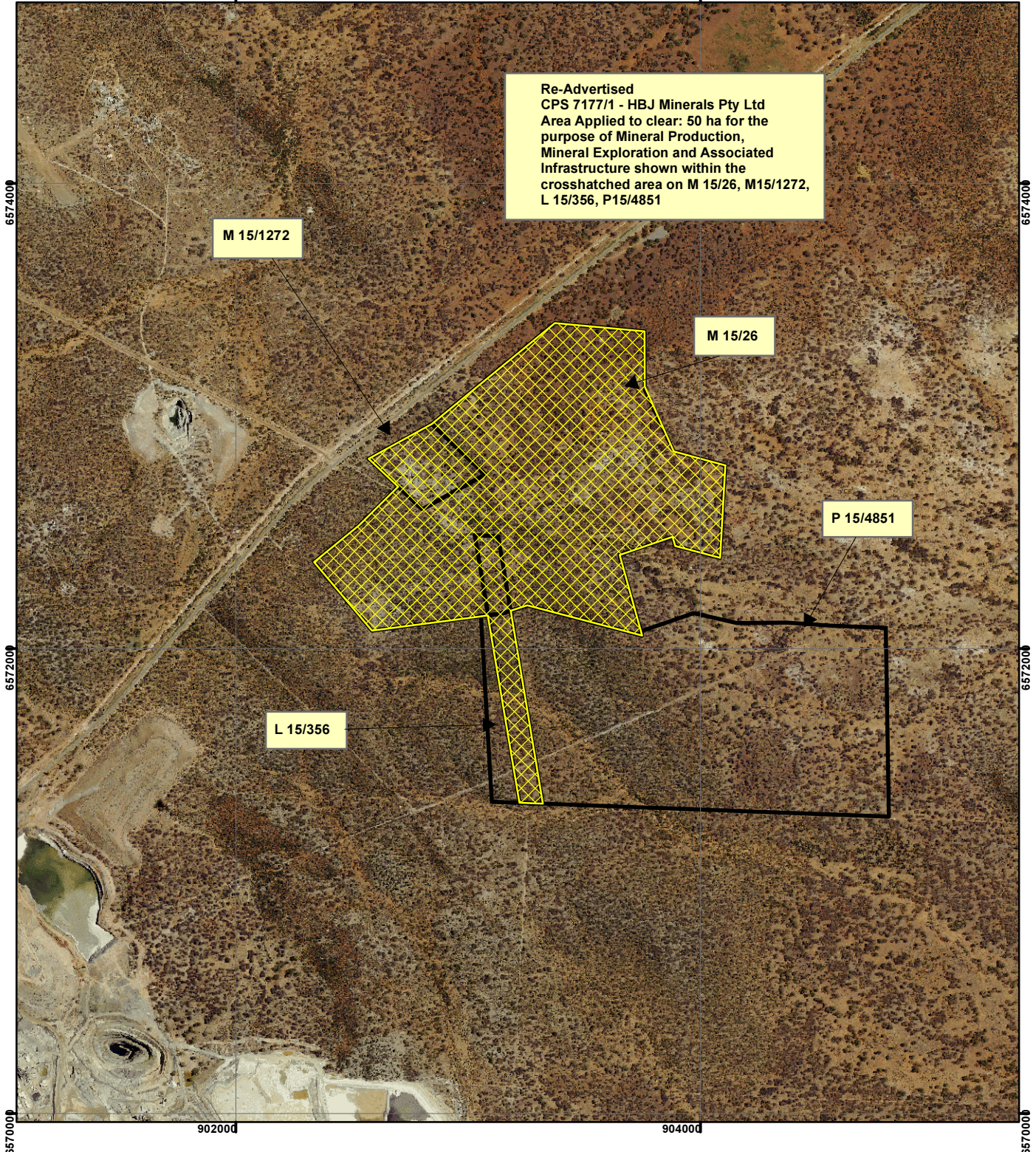


CPS 7177/1 - HBJ Minerals Pty Ltd

90200g

90400g



Re-Advertised
CPS 7177/1 - HBJ Minerals Pty Ltd
Area Applied to clear: 50 ha for the
purpose of Mineral Production,
Mineral Exploration and Associated
Infrastructure shown within the
crosshatched area on M 15/26, M15/1272,
L 15/356, P15/4851

M 15/1272

M 15/26

P 15/4851

L 15/356

Legend

Clearing Instruments

Mining Tenements

FMT_TENID

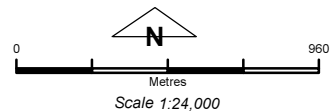
L 15/356

M 15/1272

M 15/26

P 15/4851

Kalgoorlie Aerial Mosaic October 2011



Geocentric Datum Australia 1994

Note: the data in this map have not been projected. This may result in geometric distortion or measurement inaccuracies.

..... Date

Officer with delegated authority under Section 20 of the Environmental Protection Act 1986

Information derived from this map should be confirmed with the data custodian acknowledged by the agency acronym in the legend.

