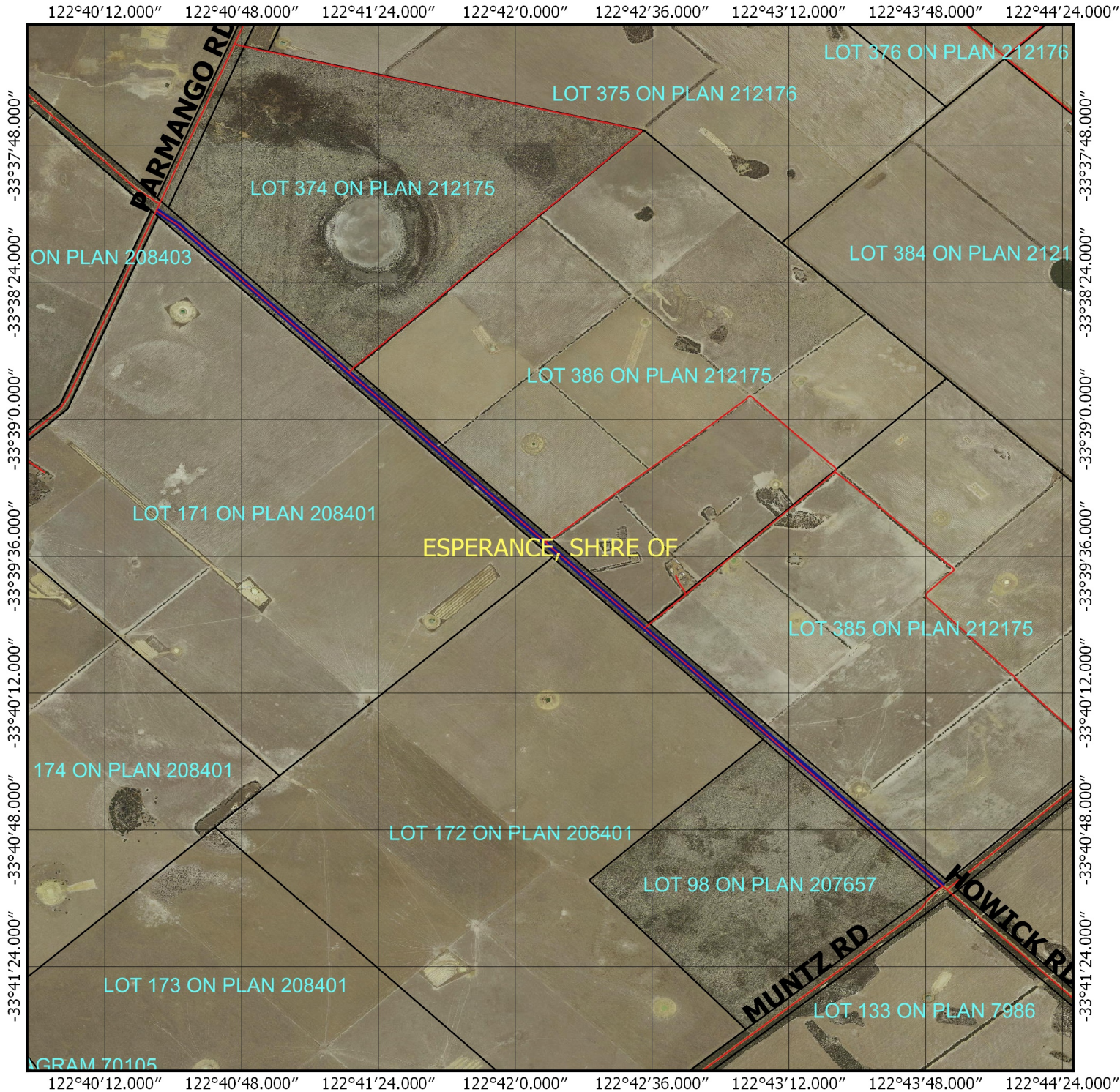









# CPS 7185/1 - Map



<b>Legend</b>		 1:28,092 MGA 94 Geocentric Datum of Australia 1994	
	Clearing Instruments Proposal	.....Date.....	
	Roads	Officer with delegated authority under Section 20 of the Environmental Protection Act 1986	
	LGA	 GOVERNMENT OF WESTERN AUSTRALIA	
	Cadastre		
	Virtual Mosaic		
