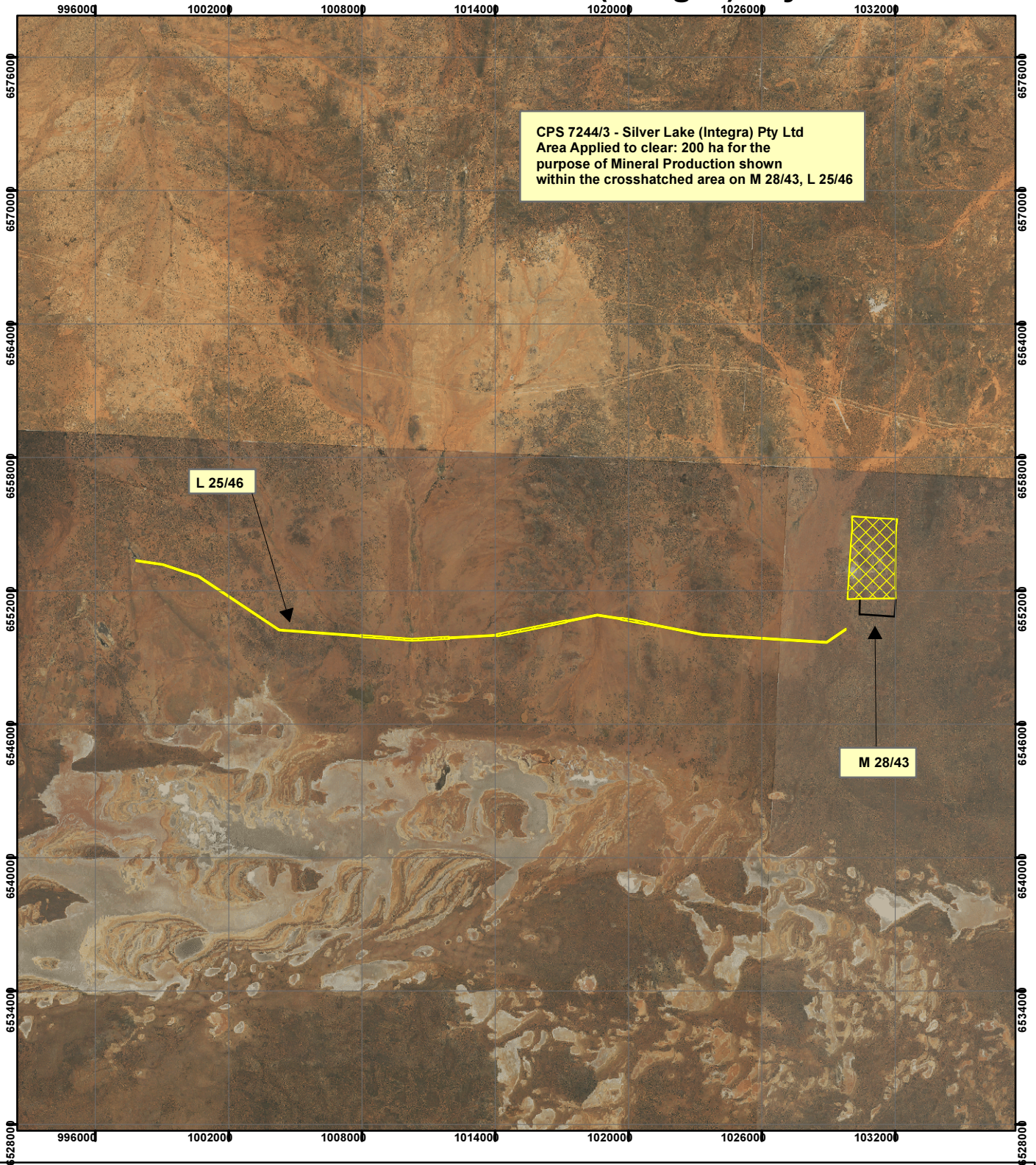


CPS 7244/3 - Silver Lake (Integra) Pty Ltd




CPS 7244/3 - Silver Lake (Integra) Pty Ltd
 Area Applied to clear: 200 ha for the
 purpose of Mineral Production shown
 within the crosshatched area on M 28/43, L 25/46

L 25/46

M 28/43

Legend

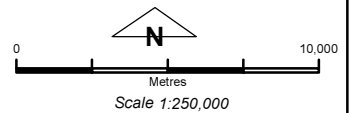
 Clearing Instruments

Mining Tenements

FMT_TENID

 L 25/46

 M 28/43



Geocentric Datum Australia 1994

Note: the data in this map have not been projected. This may result in geometric distortion or measurement inaccuracies.

..... Date

Officer with delegated authority under Section 20 of
 the Environmental Protection Act 1986

Information derived from this map should be
 confirmed with the data custodian acknowledged
 by the agency acronym in the legend.

