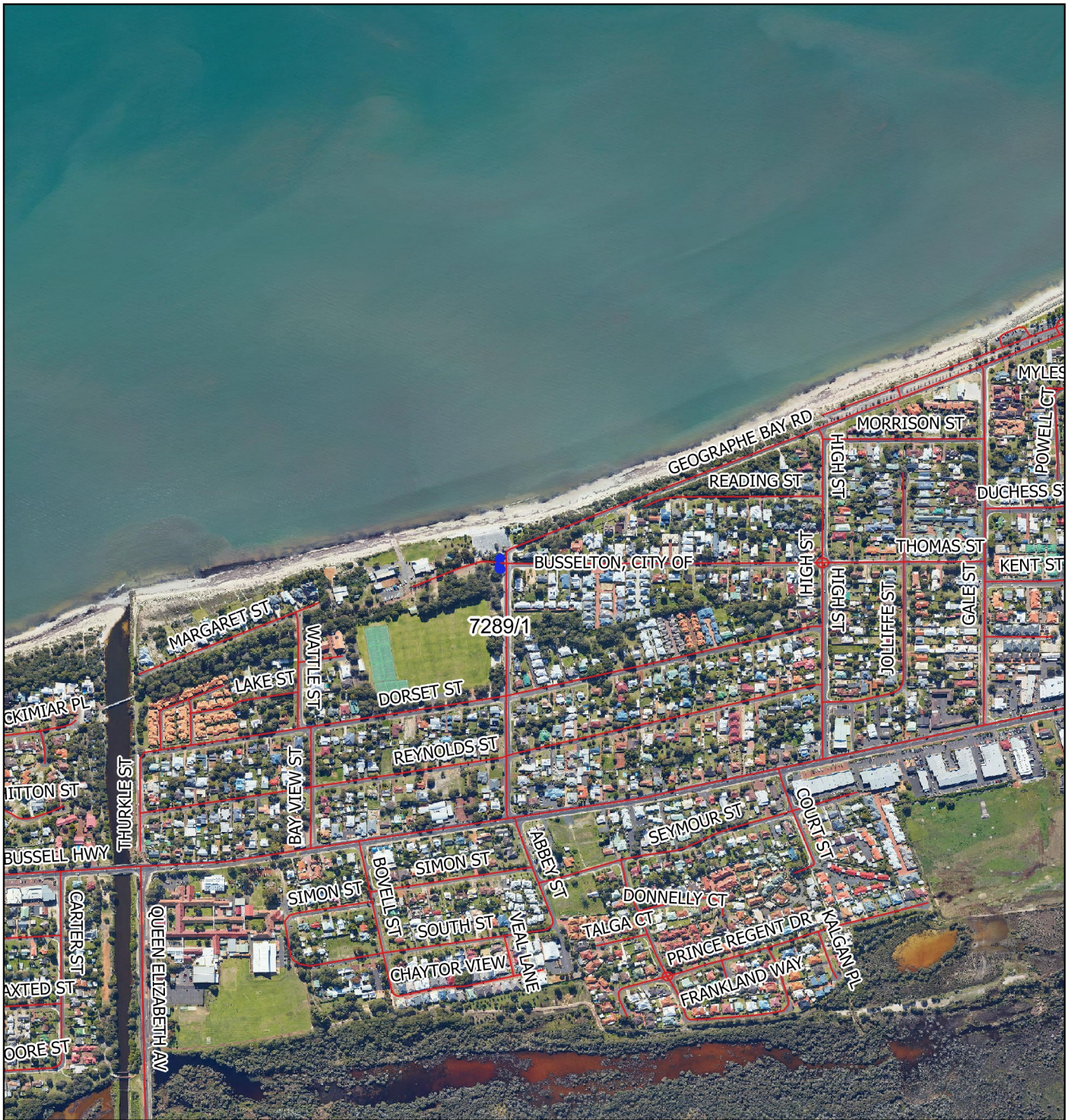


CPS 7289/1 - Context Map c



Legend

- Clearing Instruments Proposal
- Cadastre
- Roads
- local_gov_authority
- Virtual Mosaic
-



1:7,000
MGA 94
Geocentric Datum of Australia 1994

.....Date.....

Officer with delegated authority under Section 20
of the Environmental Protection Act 1986



GOVERNMENT OF
WESTERN AUSTRALIA