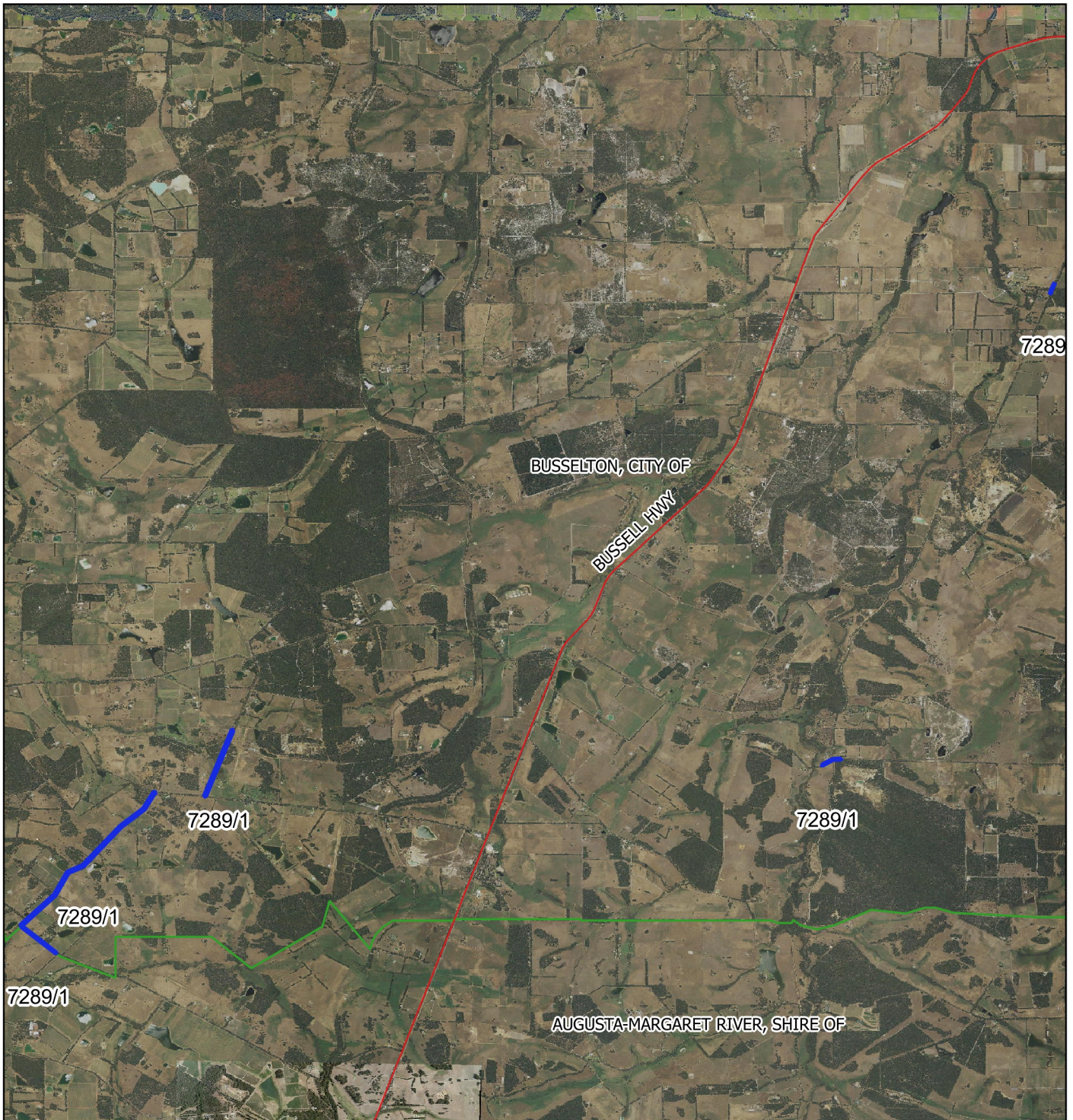







# CPS 7289/2 -Context Map a



## Legend

-  Clearing Instruments Proposal
-  Cadastre
-  Roads
-  local\_gov\_authority
- Virtual Mosaic
- 



1:54,994

MGA 94

Geocentric Datum of Australia 1994

.....Date.....

Officer with delegated authority under Section 20  
of the Environmental Protection Act 1986



GOVERNMENT OF  
WESTERN AUSTRALIA