

CPS 7307/1 - Context map

115°27'0.000"

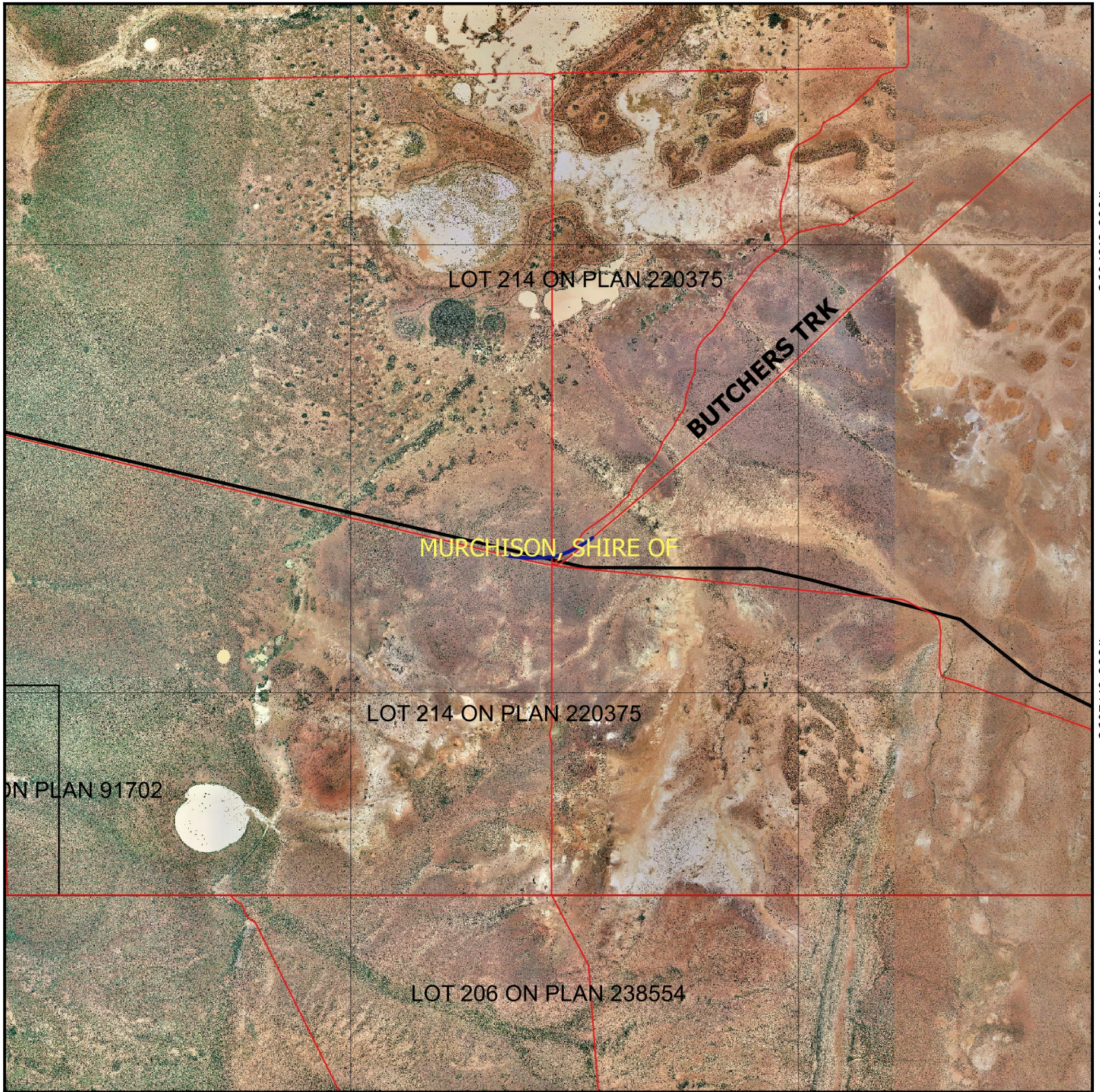
115°30'0.000"

-26°48'0.000"

-26°48'0.000"

-26°51'0.000"

-26°51'0.000"



115°27'0.000"

115°30'0.000"

Legend

-  Clearing Instruments Proposal
-  Roads
-  LGA
-  Cadastre
-  Virtual Mosaic



1:50,000

MGA 94
Geocentric Datum of Australia 1994

.....Date.....

Officer with delegated authority under Section 20
of the Environmental Protection Act 1986

500 0 500 1000 1500 2000 m



GOVERNMENT OF
WESTERN AUSTRALIA