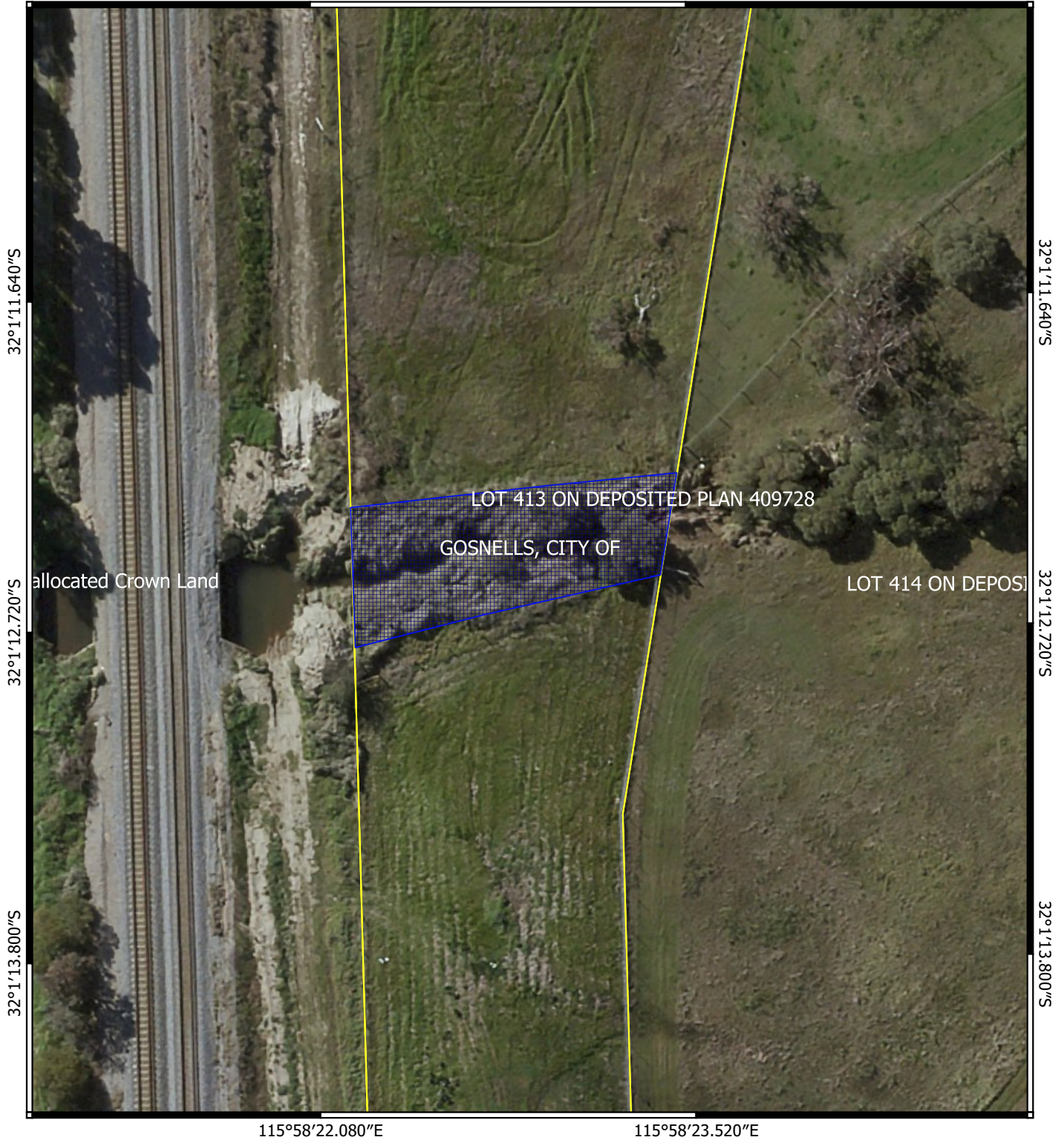





CPS 7310/3 Map

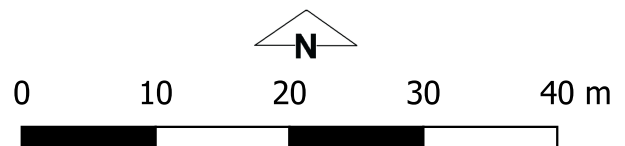
115°58'22.080"E

115°58'23.520"E



Legend

-  Cadastre - LGATE 218
-  CPS areas applied to clear
Local Government Authorities
-  Road Centrelines



Officer delegated under section 20 of the
Environmental Protection Act 1986



GOVERNMENT OF
WESTERN AUSTRALIA