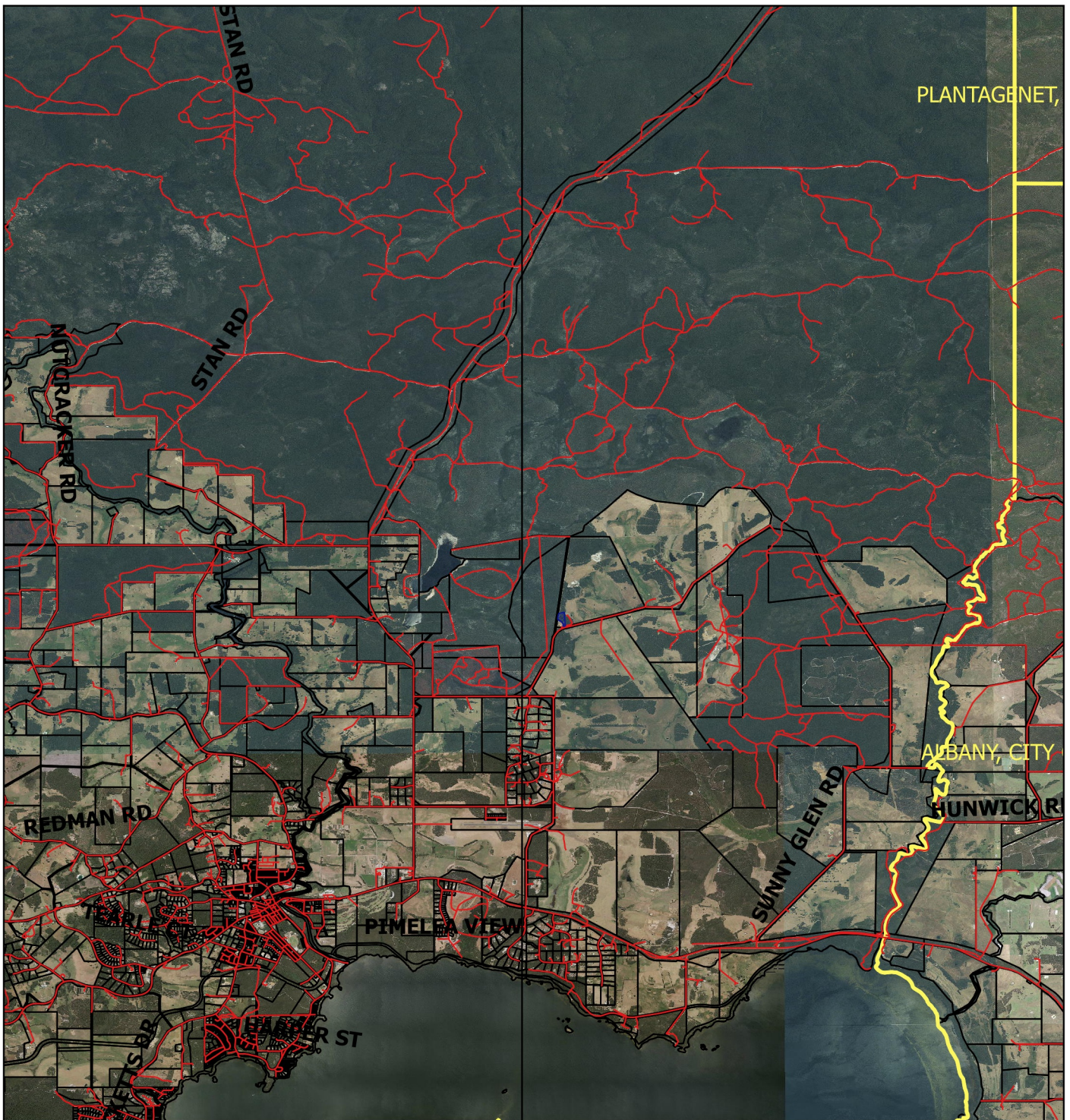






# CPS 7371/1 - Context Map

117°24'0.000"



117°24'0.000"

## Legend

-  Clearing Instruments Proposal
  -  Roads
  -  LGA
  -  Cadastre
- Virtual Mosaic (LGATE-V001)



1:70,000

MGA 94  
Geocentric Datum of Australia 1994

.....Date.....

Officer with delegated authority under Section 20  
of the Environmental Protection Act 1986

