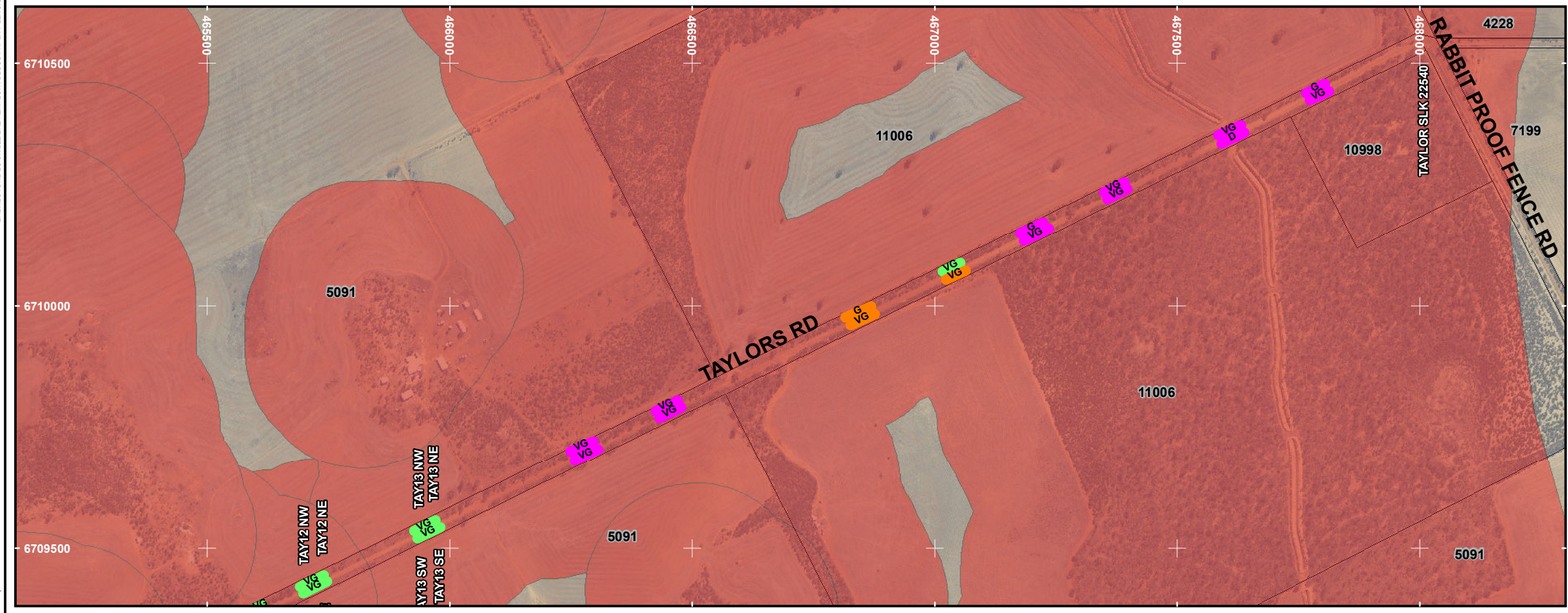
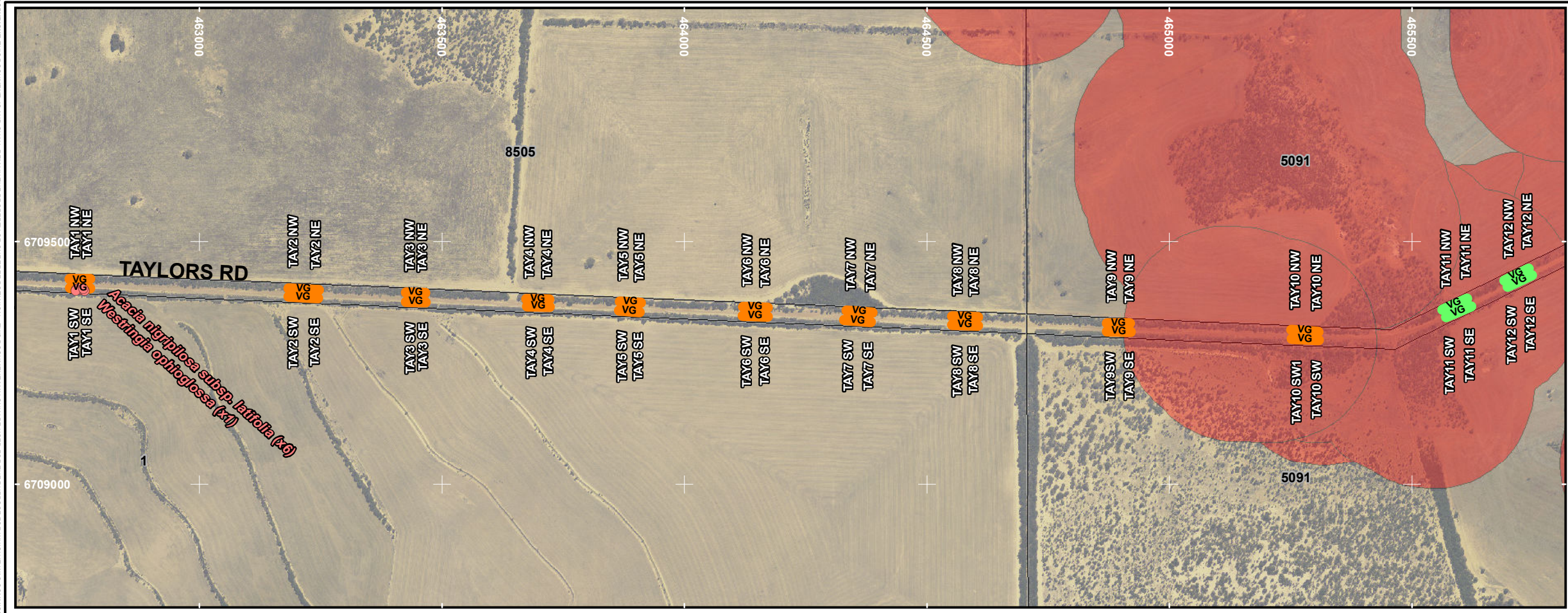


COPYRIGHT THIS DOCUMENT IS AND SHALL REMAIN THE PROPERTY OF ONE TREE BOTANICAL. THIS DOCUMENT MAY ONLY BE USED FOR THE PURPOSE FOR WHICH IT WAS COMMISSIONED AND IN ACCORDANCE WITH THE TERMS OF ENGAGEMENT.  
 ENVIRONMAPS | E: 0406 590 090 | www.environmaps.com.au  
 Environmental Mapping Solutions



- ### VEGETATION MAPPING
- A: EUCALYPT WOODLANDS ON LOWER SLOPES AND FLATS**
- A1:** Open Mallee/Tree Forest to Open Woodland/Mallee Woodland dominated by *Eucalyptus loxophleba* (York Gum) but also typically *E. salmonophloia* (Salmon Gum), *E. salubris* (Gimlet), *E. moderata*, *E. subangusta* subsp. *subangusta* and/or *E. celastroides* subsp. *virella* over Open Chenopod Shrubland *Maireana brevifolia*, *Sclerolaena* spp., *Rhagodia drummondii*, *Enchylaena tomentosa* and Sparse Grassland to Grassland *Aurolastipa elegantissima* on loamy flats.
  - A2:** *Acacia acuminata* (Jam) over Open Chenopod Shrubland *Maireana brevifolia*, *Sclerolaena* spp., *Rhagodia drummondii*, *Enchylaena tomentosa* and Sparse Grassland to Grassland *Aurolastipa elegantissima* on lower slopes and flats. Transition community adjacent to Eucalypt Woodlands)
- B: BROOMBUSH SHRUBLANDS FRINGING SAMPHIRE ON SALINE FLATS**
- B1:** Sparse Heathland to Heathland dominated by *Melaleuca stereophylla* (Broombush) and *Melaleuca* spp. over Open Chenopod Shrubland dominated by *Maireana brevifolia*, *Rhagodia semibaccata* and *Enchylaena tomentosa* and Sparse Grassland to Grassland including *Monachather paradoxa* and *Aurolastipa elegantissima* on clayey sands adjacent to saline valley floors. (Figure 2a).
  - B2:** Closed Samphire Shrubland of *Tecticornia* spp. and/or *Sarcocornia* sp. (identifications pending) in saline valley floors. (Figure 2a).
- C: ACACIA AND ALLOCASUARINA TALL SHRUBLAND ON UNDULATING PLAINS**
- C1:** Tall Open to Closed Heathland (>2m) typically of *A. resinomarginea*, *A. neurophylla* subsp. *erugata*, *A. stereophylla* var. *stereophylla* (Wattles), *Santalum acuminatum* (Quandong), *Hakea* spp. and/or *Allocasuarina acutivalvis*. Isolated Trees emergent *Eucalyptus* species typically *E. leptopoda* subsp. *arctata*, *E. subangusta* subsp. *pusilla*, *E. kochii* subsp. *kochii*. Sparse Heathland (1-2m) typically of *Grevillea paradoxa*, *Hibbertia arcuata*, *Gastrolobium laytonii*, *Melaleuca conothamnoides* and/or *M. cordata* over Isolated Grasses to Grassland of *Aurolastipa elegantissima* and/or *Monachather paradoxa*.
- D: CLEARED AREAS**
- Historically cleared areas. Scattered native shrubs and trees over introduced and native grasses and herbs.

**Caveat:** Structure modified from these description in many instances, with various stages of regrowth and/or localised disturbance due to historical disturbance. Roadside remnants frequently only between 1-5m wide.

**Vegetation Condition Rating for the South West Botanical Province**  
(EPA and DPaW, 2015).

Rating	Description	Notes
P	<b>Pristine</b>	Pristine or nearly so, no obvious signs of disturbance or damage caused by human activities since European settlement.
E	<b>Excellent</b>	Vegetation structure intact, disturbance affecting individual species and weeds are non-aggressive species. Damage to trees caused by fire, the presence of non-aggressive weeds and occasional vehicle tracks.
VG	<b>Very Good</b>	Vegetation structure altered, obvious signs of disturbance. Disturbance to vegetation structure caused by repeated fires, the presence of some more aggressive weeds, dieback, logging and grazing.
G	<b>Good</b>	Vegetation structure significantly altered by very obvious signs of multiple disturbances. Retains basic vegetation structure or ability to regenerate it. Disturbance to vegetation structure caused by very frequent fires, the presence of very aggressive weeds, partial clearing, dieback and grazing.
D	<b>Degraded</b>	Basic vegetation structure severely impacted by disturbance. Scope for regeneration but not to a state approaching good condition without intensive management. Disturbance to vegetation structure caused by very frequent fires, the presence of very aggressive weeds at high density, partial clearing, dieback and grazing.
CD	<b>Completely Degraded</b>	The structure of the vegetation is no longer intact and the area is completely or almost completely without native species. These areas are often described as 'parkland cleared' with the flora comprising weed or crop species with isolated native trees and shrubs.

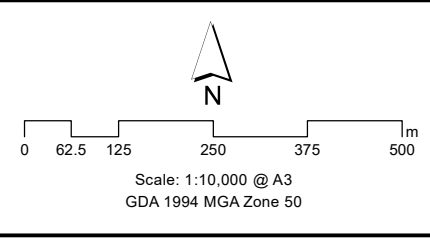
Client: Bamford Consulting Ecologists for Greenfields Technical Services  
 Job: P1701  
 Date: 8/05/2017  
 E: kelli@onetreebotanical.com.au  
 P: (08) 9371 9491  
 M: 0407 423 928

**LEGEND**

- Cadastre
- Known records of 'Eucalypt woodlands of the Western Australian Wheatbelt' PEC (Priority 3). Equivalent to EPBC Act 1999 listed TEC (Critically Endangered) of the same name. Includes a 200m buffer.

**Priority Flora**

- Threatened
- Priority 1
- Priority 2
- Priority 3
- Priority 4



**FIGURE 1**

**TAYLOR ROAD FLORA & VEGETATION MAPPING**

C:\GIS\Jobs\One Tree Botanical\P1701 - Perenjori Roads\P1701\_F01 Taylor Road Flora and Vegetation Mapping\_170506.mxd