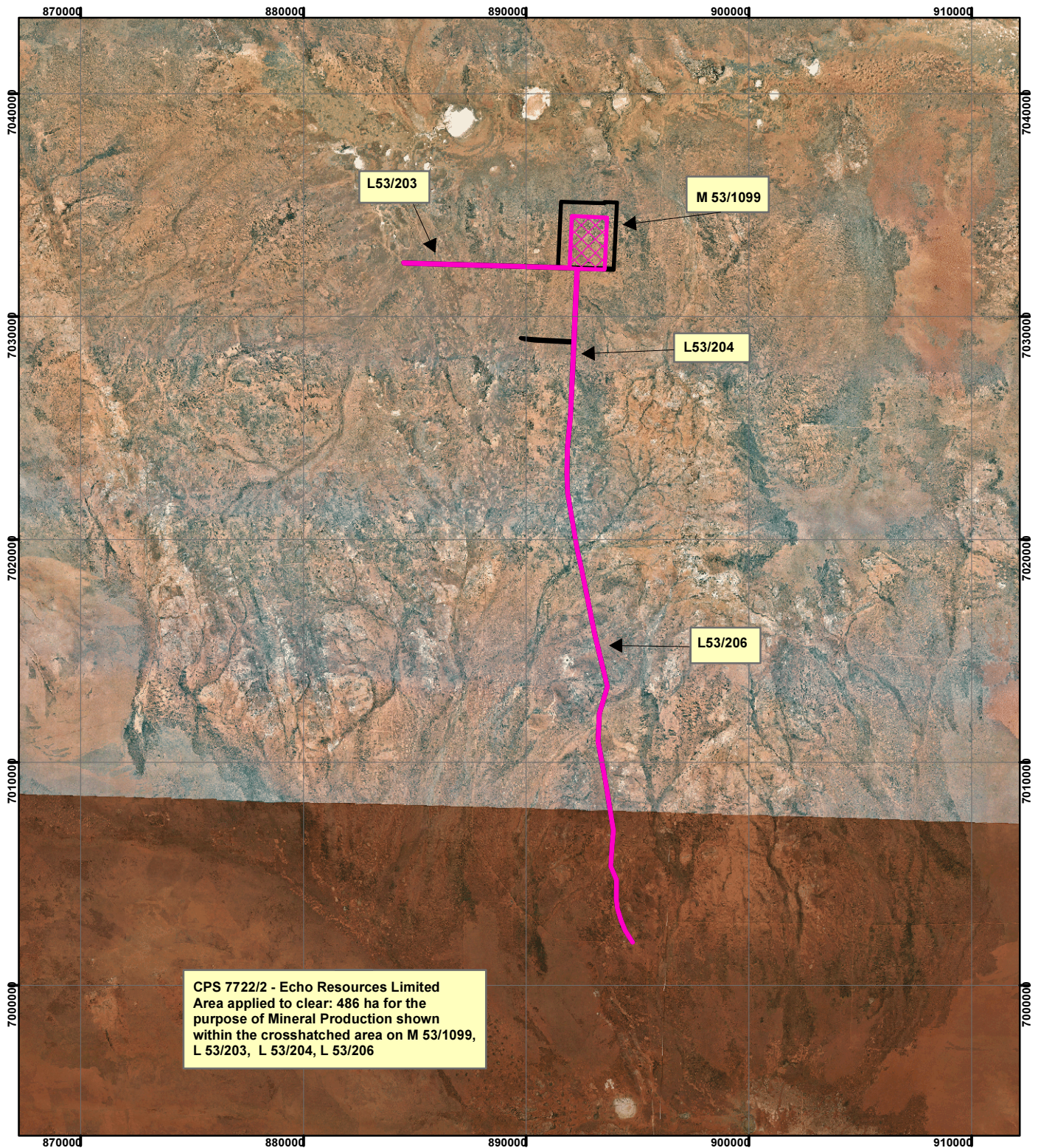







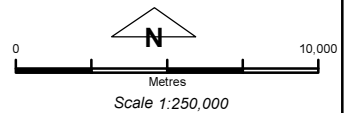
# CPS 7422/2 - Echo Resources Limited



CPS 7722/2 - Echo Resources Limited  
 Area applied to clear: 486 ha for the  
 purpose of Mineral Production shown  
 within the crosshatched area on M 53/1099,  
 L 53/203, L 53/204, L 53/206

## Legend

-  Clearing Instruments
-  L53\_206
-  L53\_204
-  L53\_203
- TENID**
-  M 5301099



Geocentric Datum Australia 1994

*Note: the data in this map have not been projected. This may result in geometric distortion or measurement inaccuracies.*

..... Date .....

Officer with delegated authority under Section 20 of the Environmental Protection Act 1986

Information derived from this map should be confirmed with the data custodian acknowledged by the agency acronym in the legend.

