

CPS 7440/1 - Beatons Creek Gold Pty Ltd

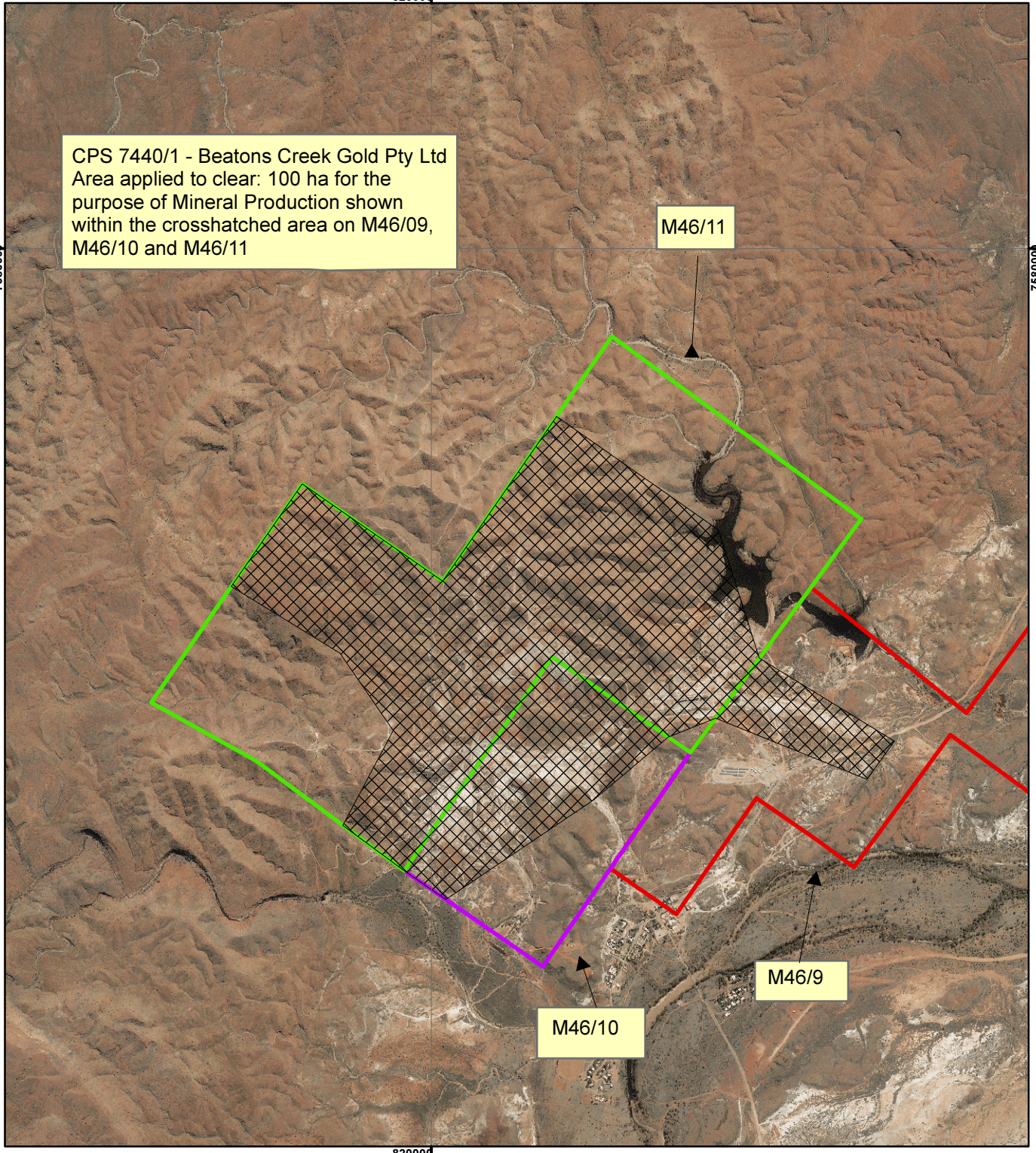
82000g

758000f

758000f

CPS 7440/1 - Beatons Creek Gold Pty Ltd
 Area applied to clear: 100 ha for the
 purpose of Mineral Production shown
 within the crosshatched area on M46/09,
 M46/10 and M46/11

M46/11




82000d

M46/10

M46/9

Legend

 Clearing Instruments

Mining Tenements

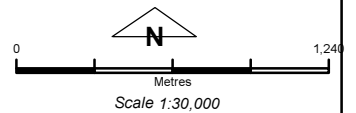
FMT_TENID

 M 46/10

 M 46/11

 M 46/9

Aerial - Nullagine 2014



Geocentric Datum Australia 1994

Note: the data in this map have not been projected. This may result in geometric distortion or measurement inaccuracies.

..... Date

Officer with delegated authority under Section 20 of the Environmental Protection Act 1986

Information derived from this map should be confirmed with the data custodian acknowledged by the agency acronym in the legend.

