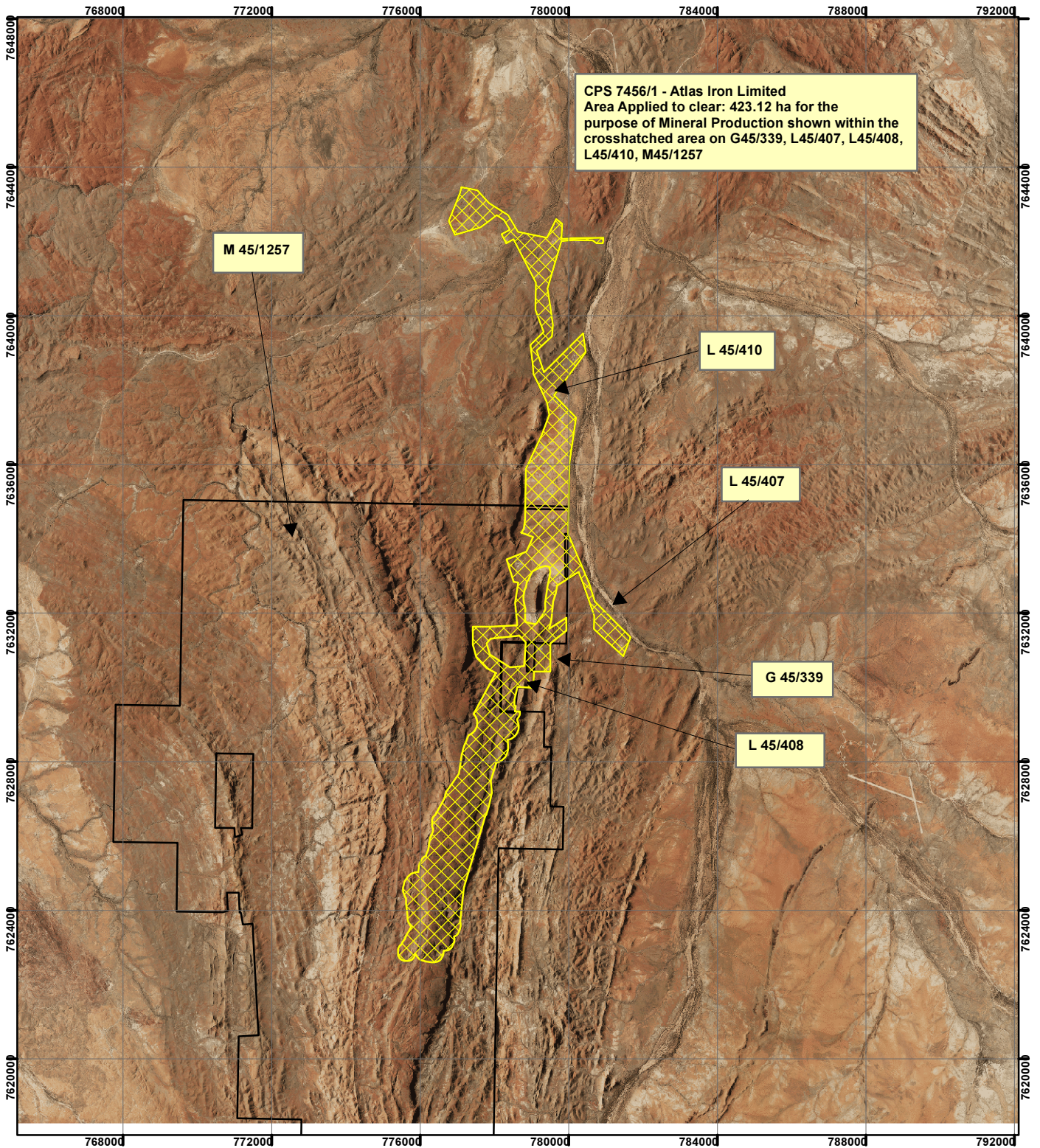


CPS 7456/1 - Atlas Iron Limited



CPS 7456/1 - Atlas Iron Limited
 Area Applied to clear: 423.12 ha for the
 purpose of Mineral Production shown within the
 crosshatched area on G45/339, L45/407, L45/408,
 L45/410, M45/1257

M 45/1257


L 45/410

L 45/407

G 45/339

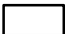


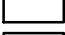
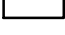
L 45/408

Legend

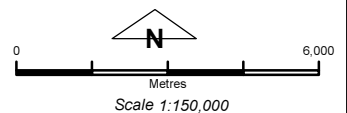
 Clearing Instruments

Mining Tenements

FMT_TENID

-  G 45/339
-  L 45/407
-  L 45/408
-  L 45/410
-  M 45/1257-I

Marble Bar Aerial Mosaic September 2015



Geocentric Datum Australia 1994

Note: the data in this map have not been projected. This may result in geometric distortion or measurement inaccuracies.

..... Date

Officer with delegated authority under Section 20 of the Environmental Protection Act 1986

Information derived from this map should be confirmed with the data custodian acknowledged by the agency acronym in the legend.

