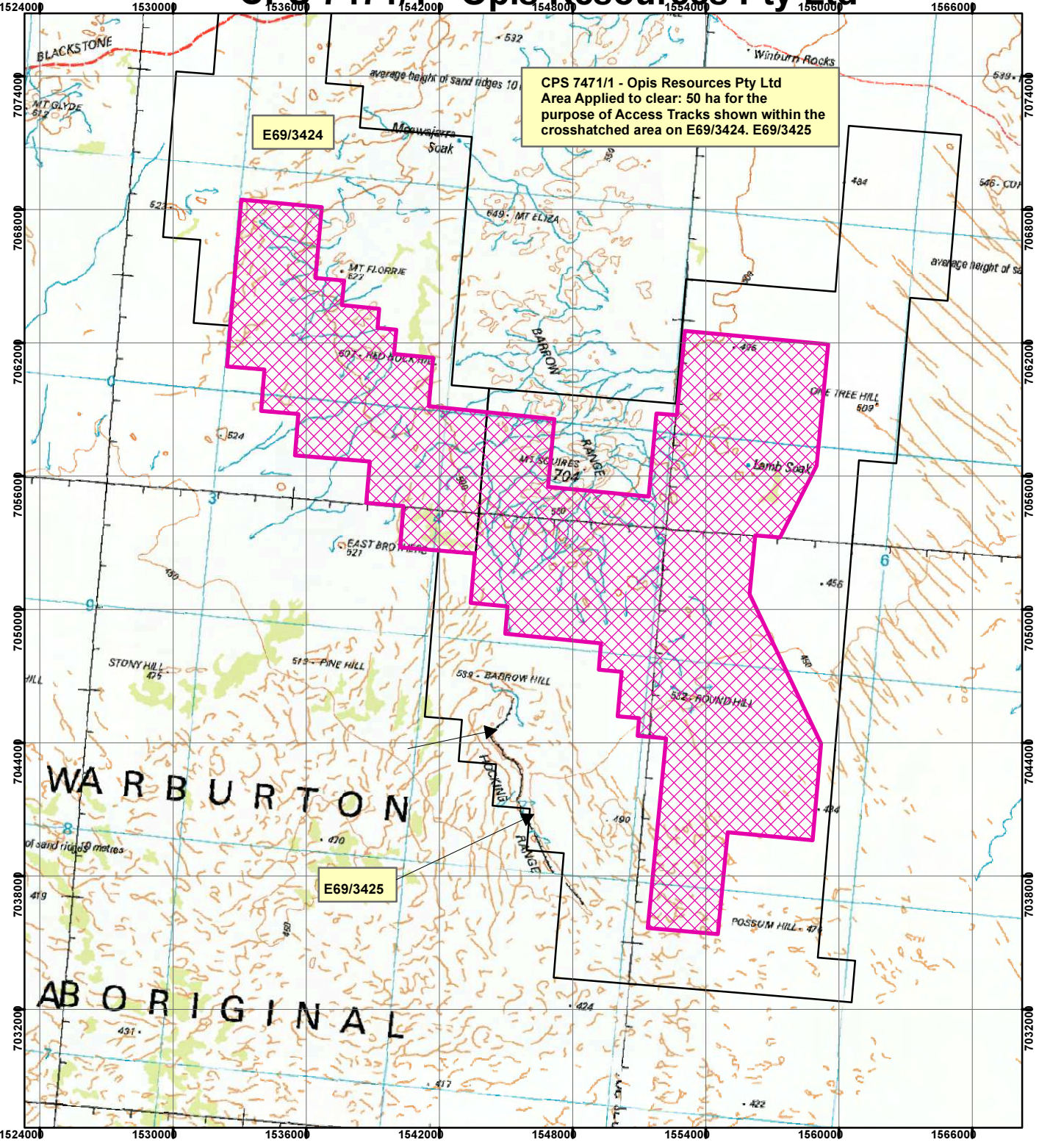


CPS 7471/1 - Opis Resources Pty Ltd




CPS 7471/1 - Opis Resources Pty Ltd
 Area Applied to clear: 50 ha for the
 purpose of Access Tracks shown within the
 crosshatched area on E69/3424. E69/3425

E69/3424


E69/3425

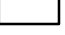
Legend

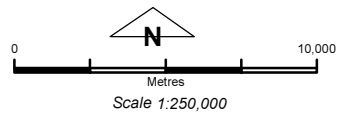
 Clearing Instruments

Mining Tenements

FMT_TENID

 E 69/3424

 E 69/3425



Geocentric Datum Australia 1994

Note: the data in this map have not been projected. This may result in geometric distortion or measurement inaccuracies.

..... Date

Officer with delegated authority under Section 20 of the Environmental Protection Act 1986

Information derived from this map should be confirmed with the data custodian acknowledged by the agency acronym in the legend.

