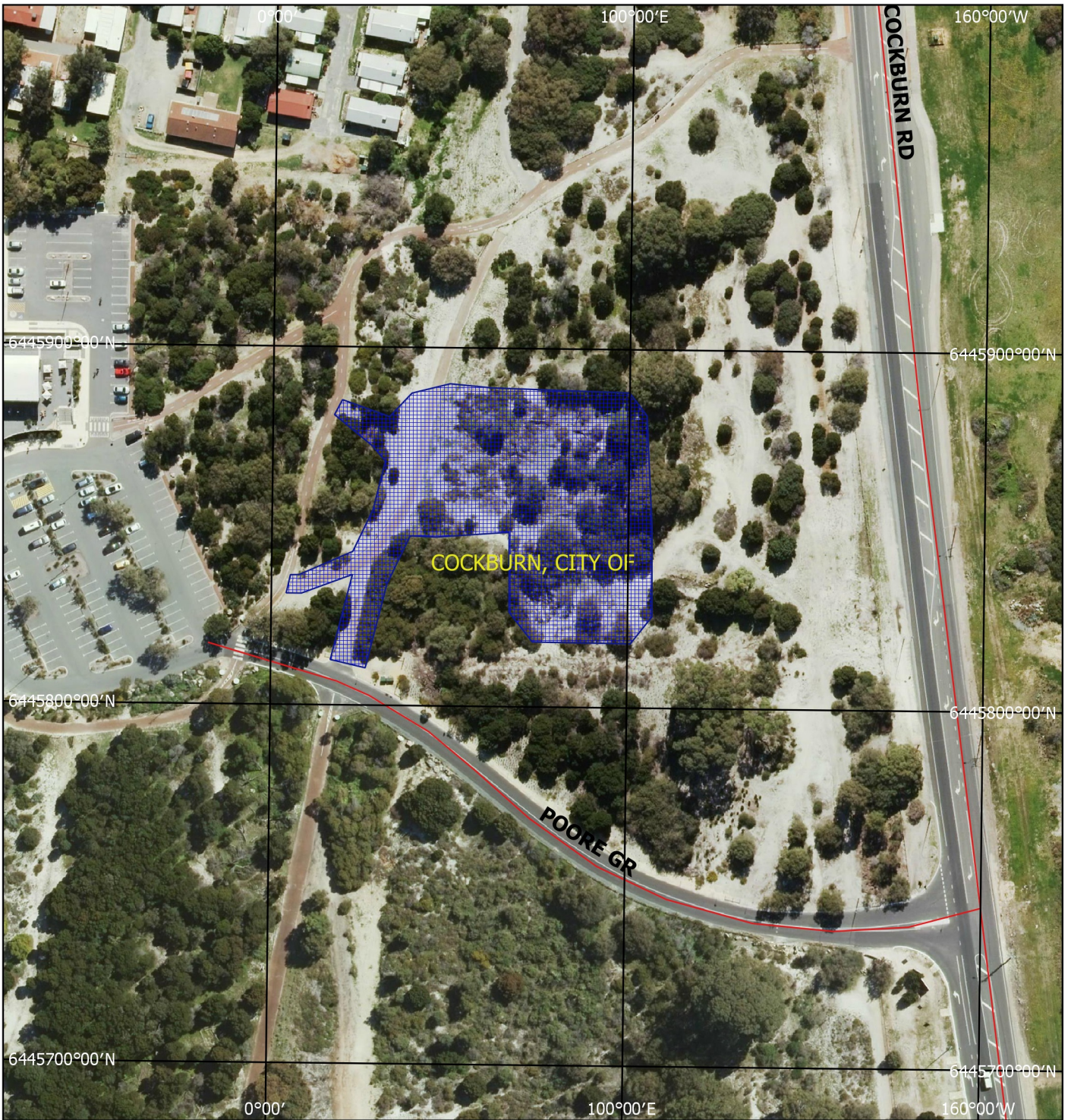






# CPS 7474/1 - Map



## Legend

-  Roads
-  LGA
-  Cadastre
- Virtual Mosaic (LGATE-V001)
-  Clearing Instruments Proposal



1:1,906

MGA 94  
Geocentric Datum of Australia 1994

.....Date.....

Officer with delegated authority under Section 20  
of the Environmental Protection Act 1986



GOVERNMENT OF  
WESTERN AUSTRALIA