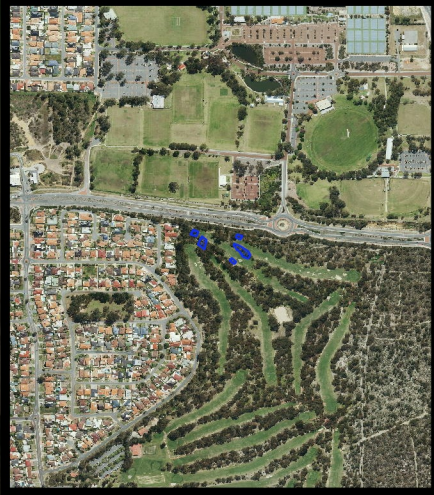


Map 7481/1

115°49'50"

115°49'52"

115°49'53"



Legend

 Areas applied to clear

 Roads

 LGA

 Cadastre

Virtual Mosaic (LGATE-V001)



1:681

MGA 94

Geocentric Datum of Australia 1994

.....Date.....

Officer with delegated authority under Section 20
of the Environmental Protection Act 1986



**GOVERNMENT OF
WESTERN AUSTRALIA**