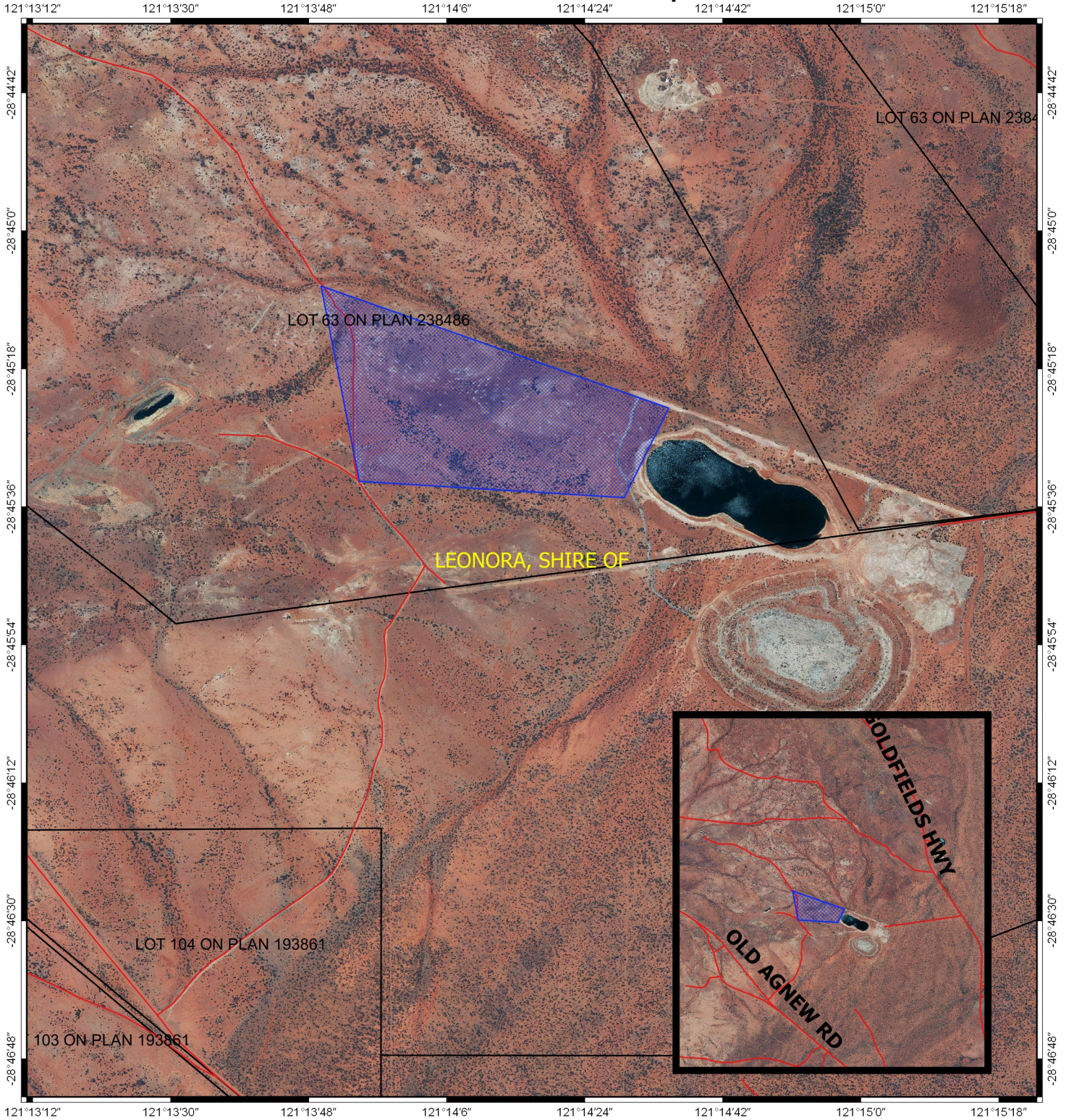






CPS 7483/1 - Map



Legend

-  Areas applied to clear
 -  Roads
 -  LGA
 -  Cadastre
- Virtual Mosaic (LGATE-V001)



1:14,999
MGA 94
Geocentric Datum of Australia 1994

.....Date.....

Officer with delegated authority under Section 20
of the Environmental Protection Act 1986



**GOVERNMENT OF
WESTERN AUSTRALIA**