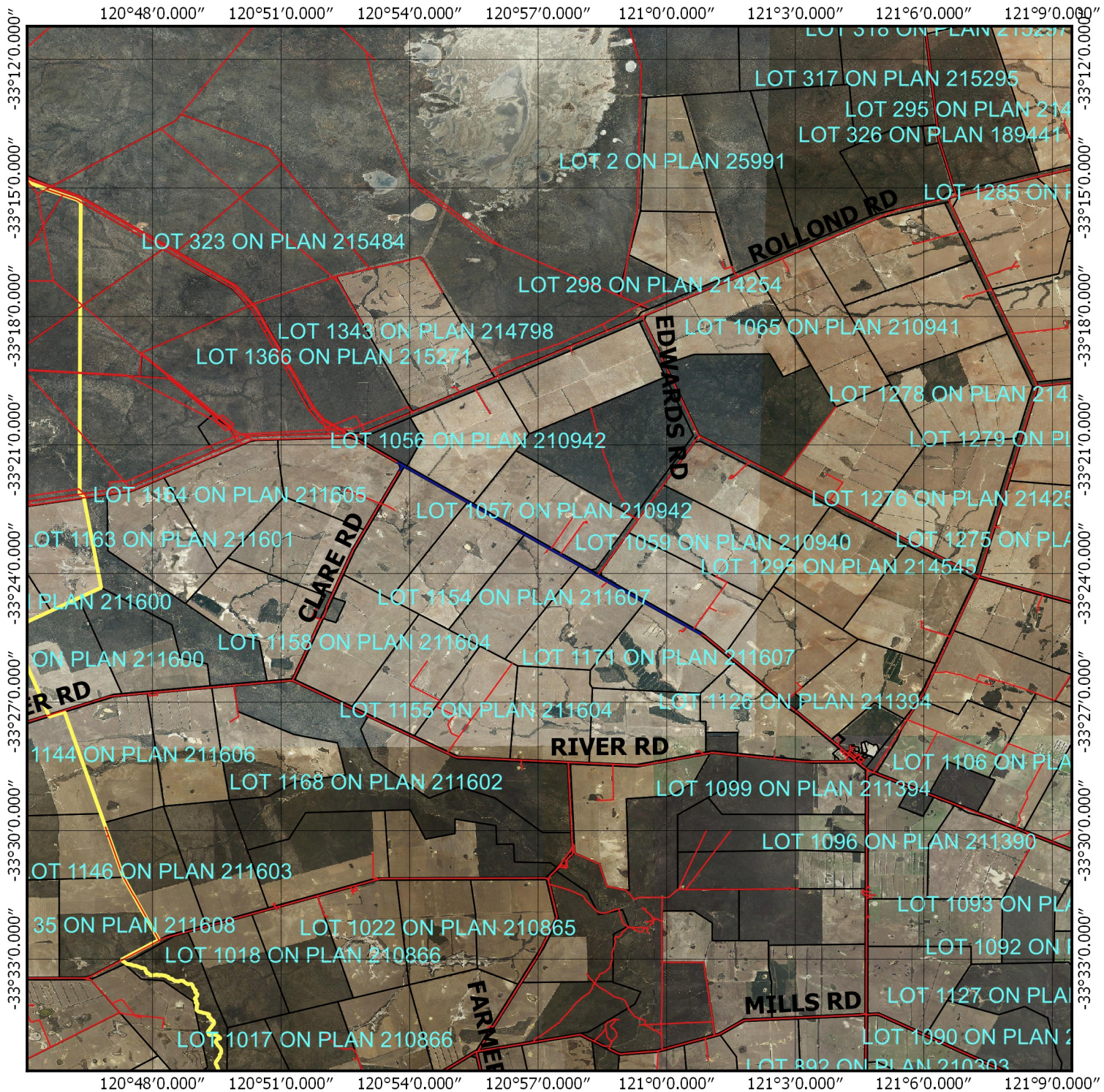


CPS 7485/1 - Context map



Legend

- Clearing Instruments Proposal
- Roads
- LGA
- Cadastre
- Virtual Mosaic
-

1:150,000
MGA 94
Geocentric Datum of Australia 1994

.....Date.....

Officer with delegated authority under Section 20
of the Environmental Protection Act 1986

GOVERNMENT OF
WESTERN AUSTRALIA

2000 0 2000 4000 6000 8000 m