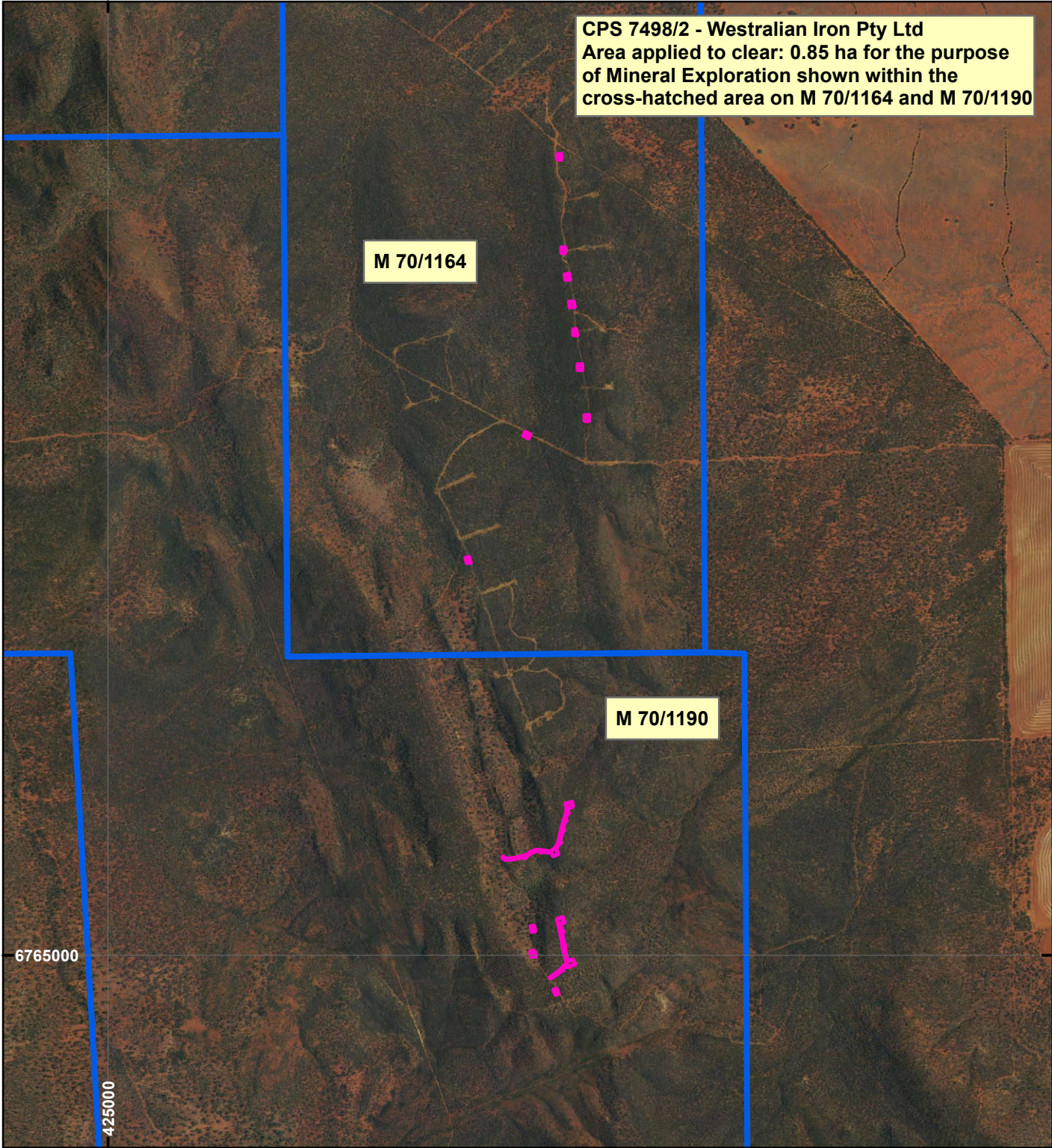
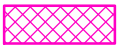



CPS 7498/2 - Westralian Iron Pty Ltd

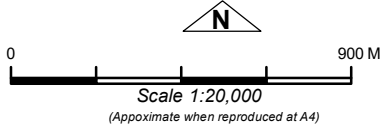
CPS 7498/2 - Westralian Iron Pty Ltd
 Area applied to clear: 0.85 ha for the purpose
 of Mineral Exploration shown within the
 cross-hatched area on M 70/1164 and M 70/1190



LEGEND

-  Clearing Instruments
-  Mining Tenements

Orthophotography sourced from Landgate



Geocentric Datum Australia 1994
 Note: the data in this map have not been projected. This may result in geometric distortion or measurement inaccuracies.

..... Date

Officer with delegated authority under Section 20 of the Environmental Protection Act 1986

Information derived from this map should be confirmed with the data custodian acknowledged by the agency acronym in the legend.

