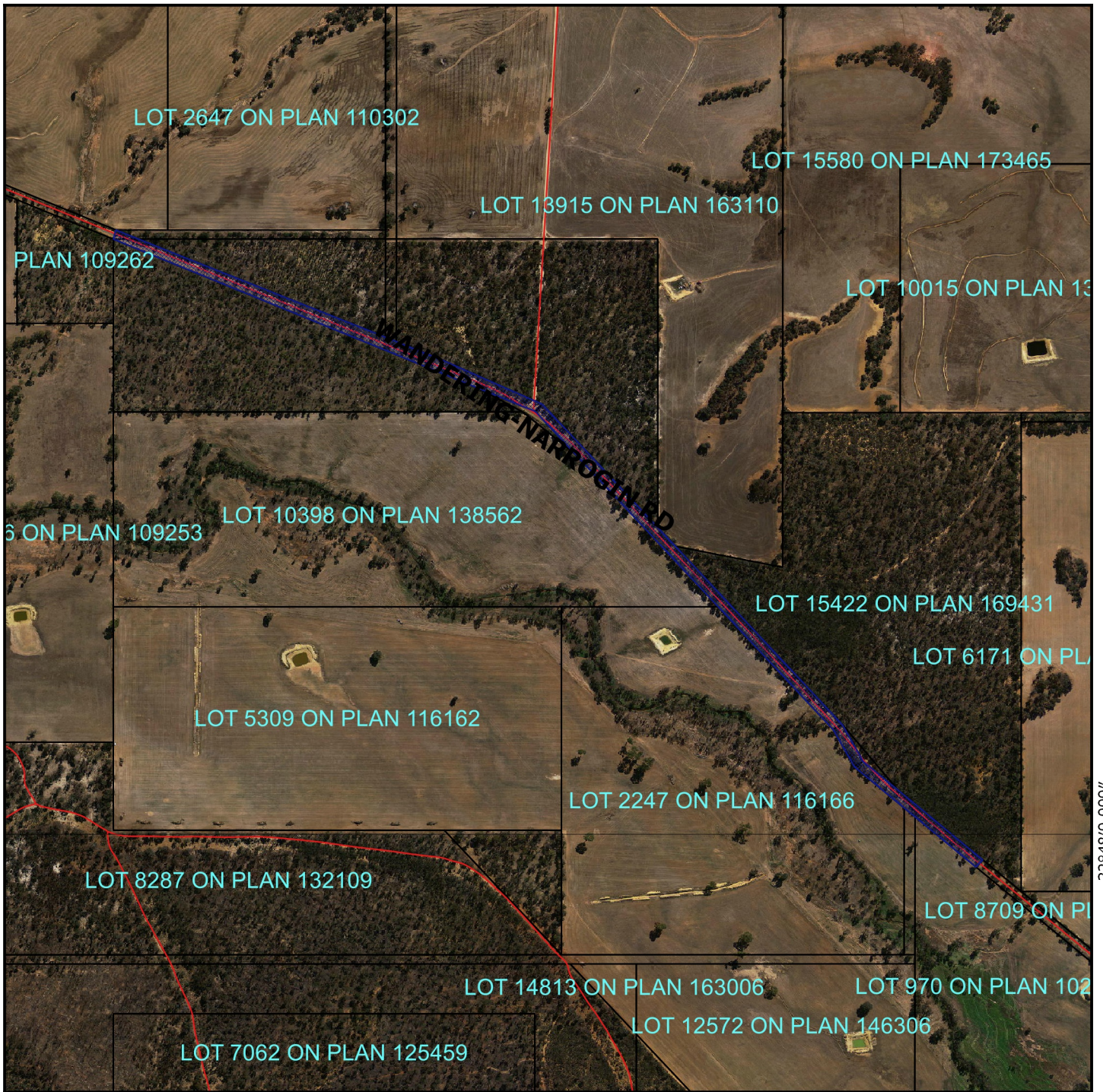








# CPS 7524/1 - Map




**Legend**

-  Clearing Instruments Proposal
-  Roads
-  LGA
-  Cadastre
- Virtual Mosaic
- 

  
 1:8,000  
 MGA 94  
 Geocentric Datum of Australia 1994

Date.....

Officer with delegated authority under Section 20  
of the Environmental Protection Act 1986

  
 GOVERNMENT OF  
 WESTERN AUSTRALIA

100 0 100 200 300 400 m

