

CPS 7526/1 - Context map

113°45'0.000"

113°48'0.000"

-24°48'0.000"

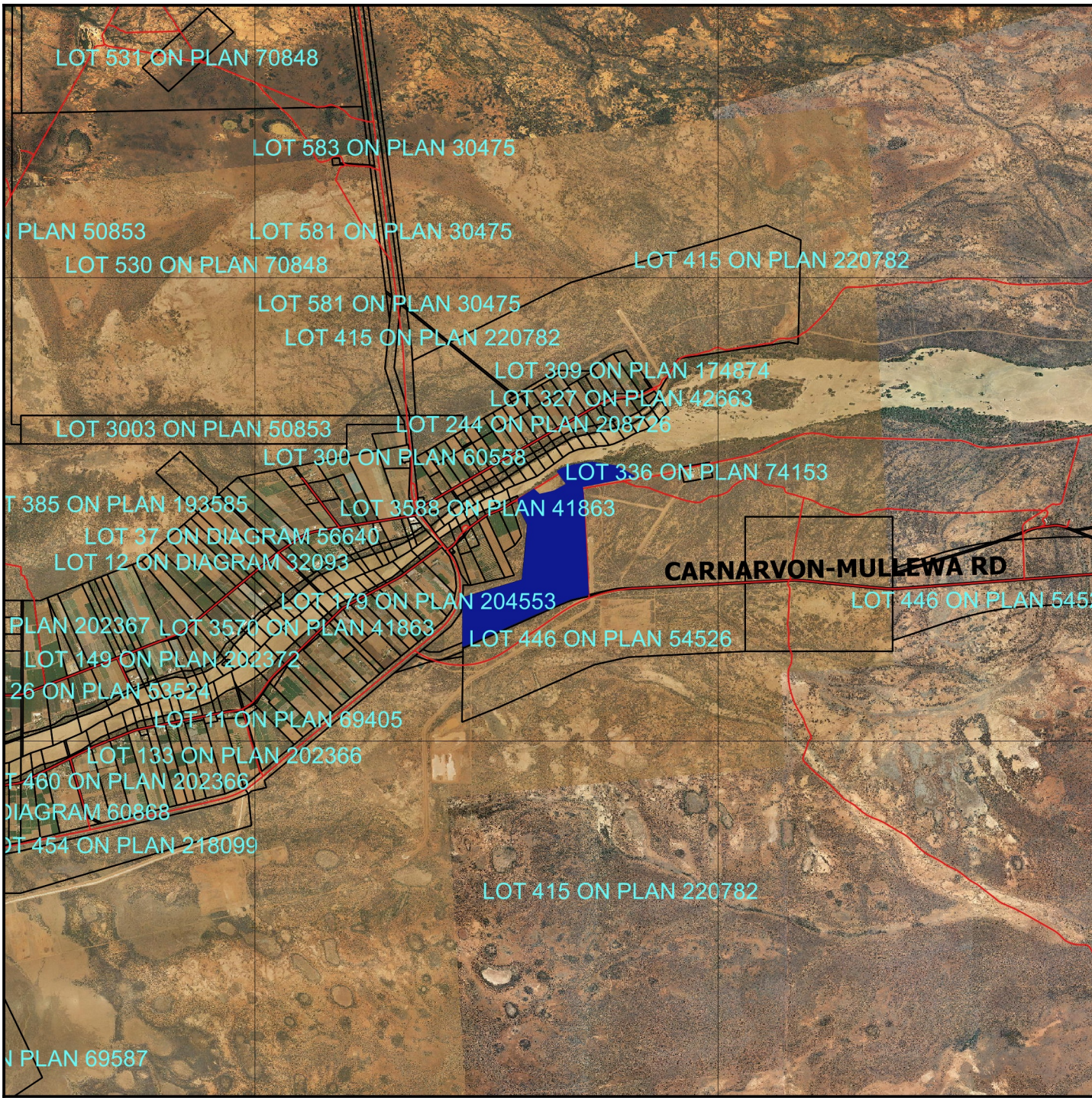
-24°48'0.000"

-24°51'0.000"






-24°51'0.000"

113°45'0.000"

113°48'0.000"



Legend

-  Clearing Instruments Proposal
-  Roads
-  LGA
-  Cadastre
-  Virtual Mosaic



1:50,000

MGA 94
Geocentric Datum of Australia 1994

.....Date.....

Officer with delegated authority under Section 20
of the Environmental Protection Act 1986



GOVERNMENT OF
WESTERN AUSTRALIA

500 0 500 1000 1500 2000 m

