

# Plan 7533/2c

115°43'30"E

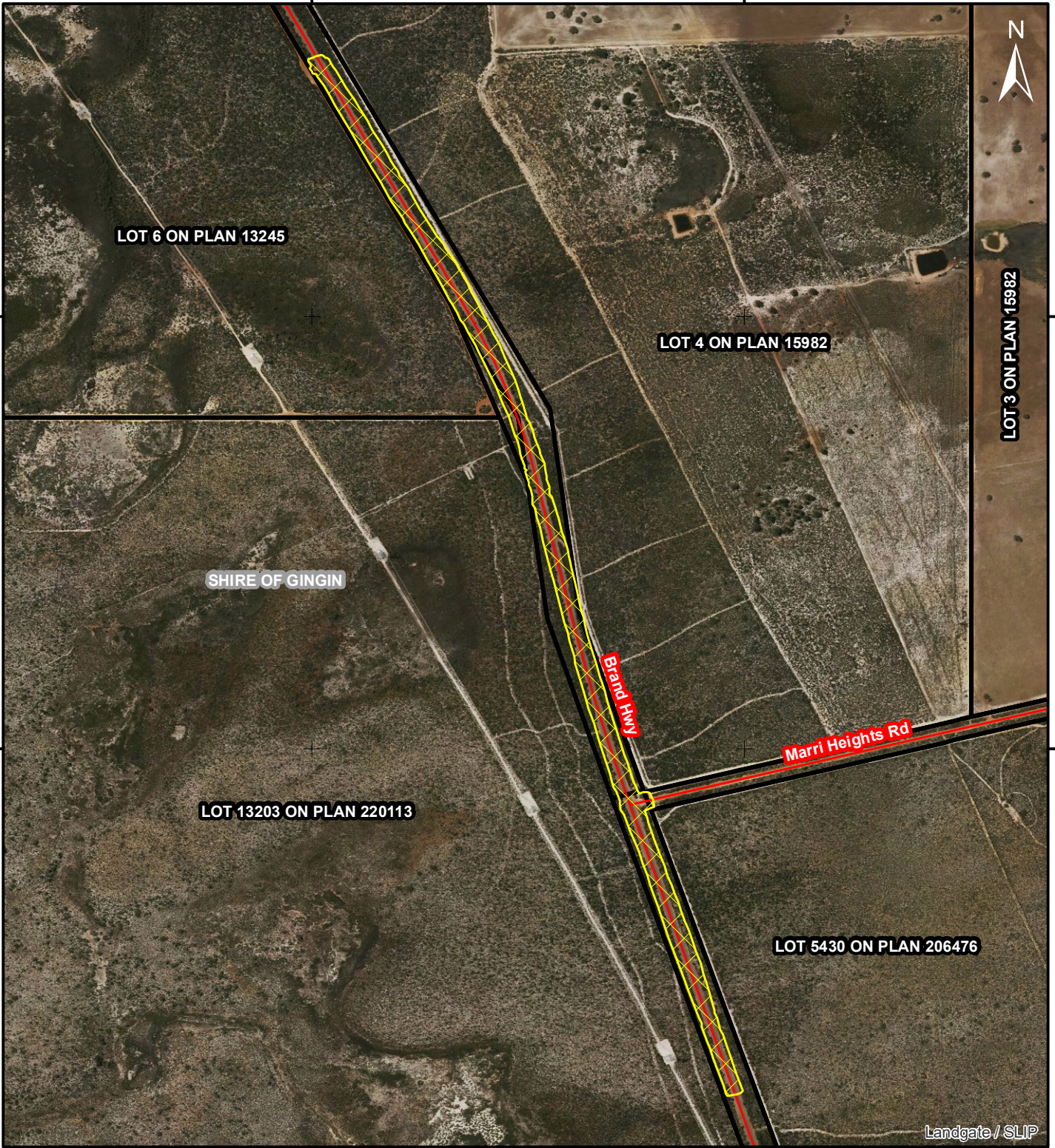
115°44'0"E

31°20'S

31°23'0"S

31°20'S


31°23'0"S




115°43'30"E


115°44'0"E

## Legend

 Areas approved to clear

 Roads

 Cadastre, Land Tenure

 Local Government Authorities

Landgate\_Subscription\_Imagery\WAnow

Officer with delegated authority under section 20 of the Environmental Protection Act 1986

GDA 94 Zone 50



1:12,000



GOVERNMENT OF  
WESTERN AUSTRALIA  
WA Crown Copyright 2019