

# Plan 7533/2i

115°29'30"E

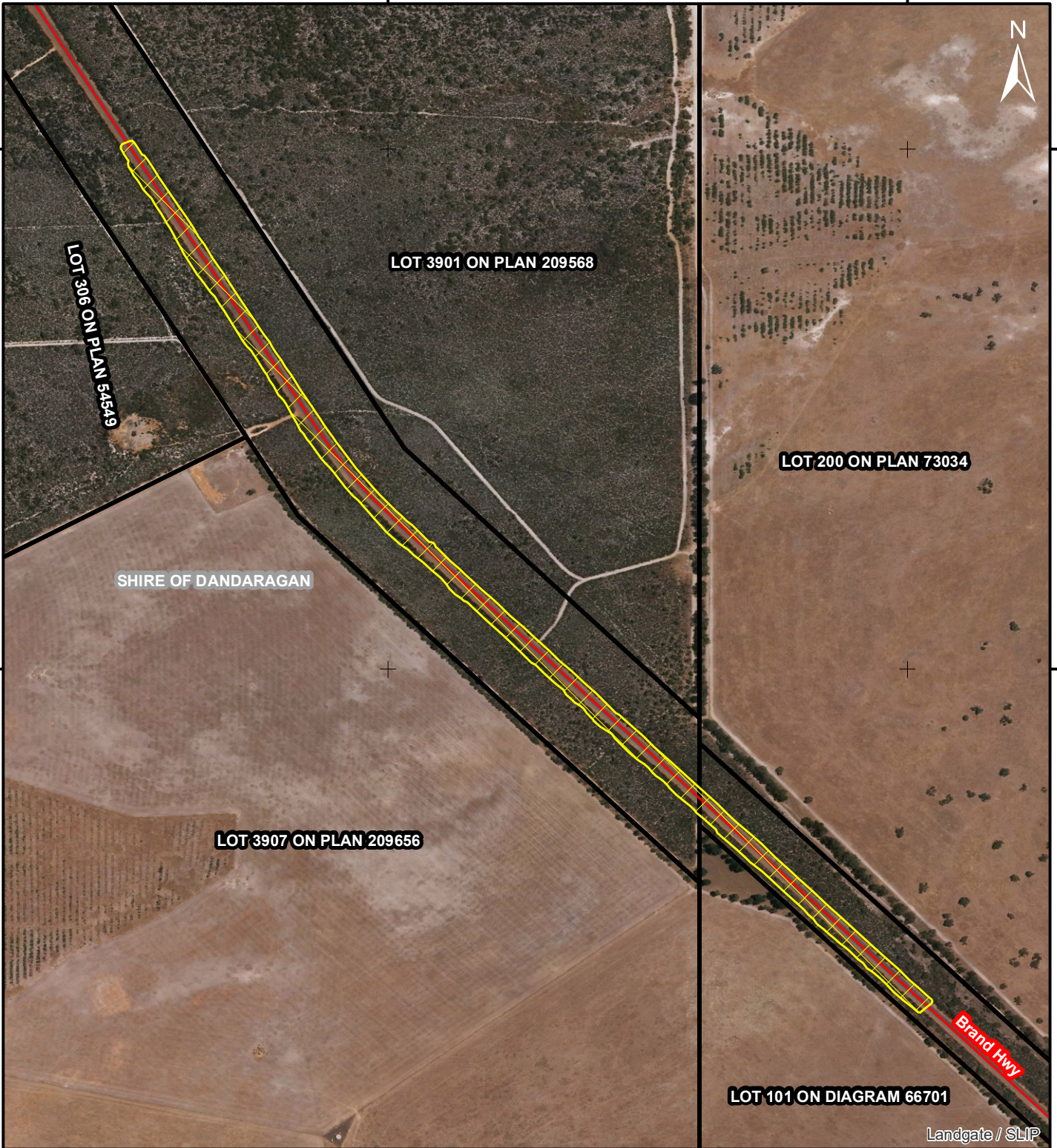
115°30'0"E

30°41'30"S

30°41'30"S

30°42'0"S


30°42'0"S



115°29'30"E


115°30'0"E

## Legend

 Areas approved to clear

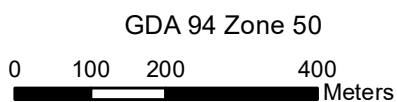
 Roads

 Cadastre, Land Tenure

 Local Government Authorities

Landgate\_Subscription\_Imagery\WANow

Officer with delegated authority under section 20 of the Environmental Protection Act 1986



GOVERNMENT OF  
WESTERN AUSTRALIA  
WA Crown Copyright 2019