

# Plan 7533/2m

115°27'30"E

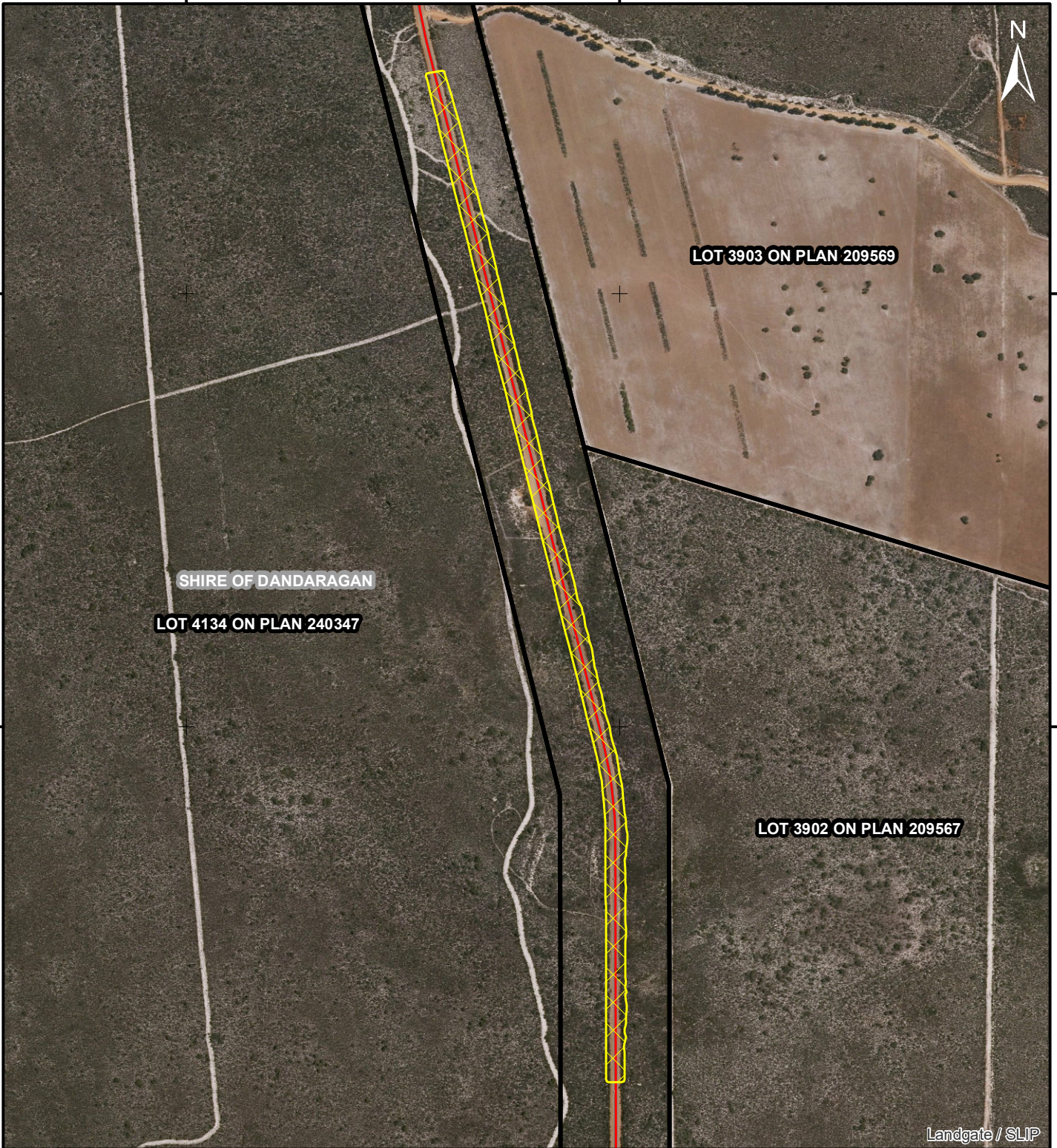
115°28'0"E

30°35'30"S

30°35'30"S

30°36'0"S


30°36'0"S




115°27'30"E

115°28'0"E

## Legend

 Areas approved to clear

 Roads

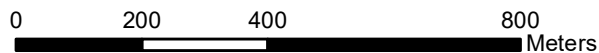
 Cadastre, Land Tenure

 Local Government Authorities

Landgate\_Subscription\_Imagery\WANow

Officer with delegated authority under section 20 of the Environmental Protection Act 1986

GDA 94 Zone 50



1:12,000



GOVERNMENT OF  
WESTERN AUSTRALIA  
WA Crown Copyright 2019