

Plan 7533/2p

115°29'0"E

115°30'0"E

115°31'0"E

30°23'0"S

30°23'0"S

30°24'0"S

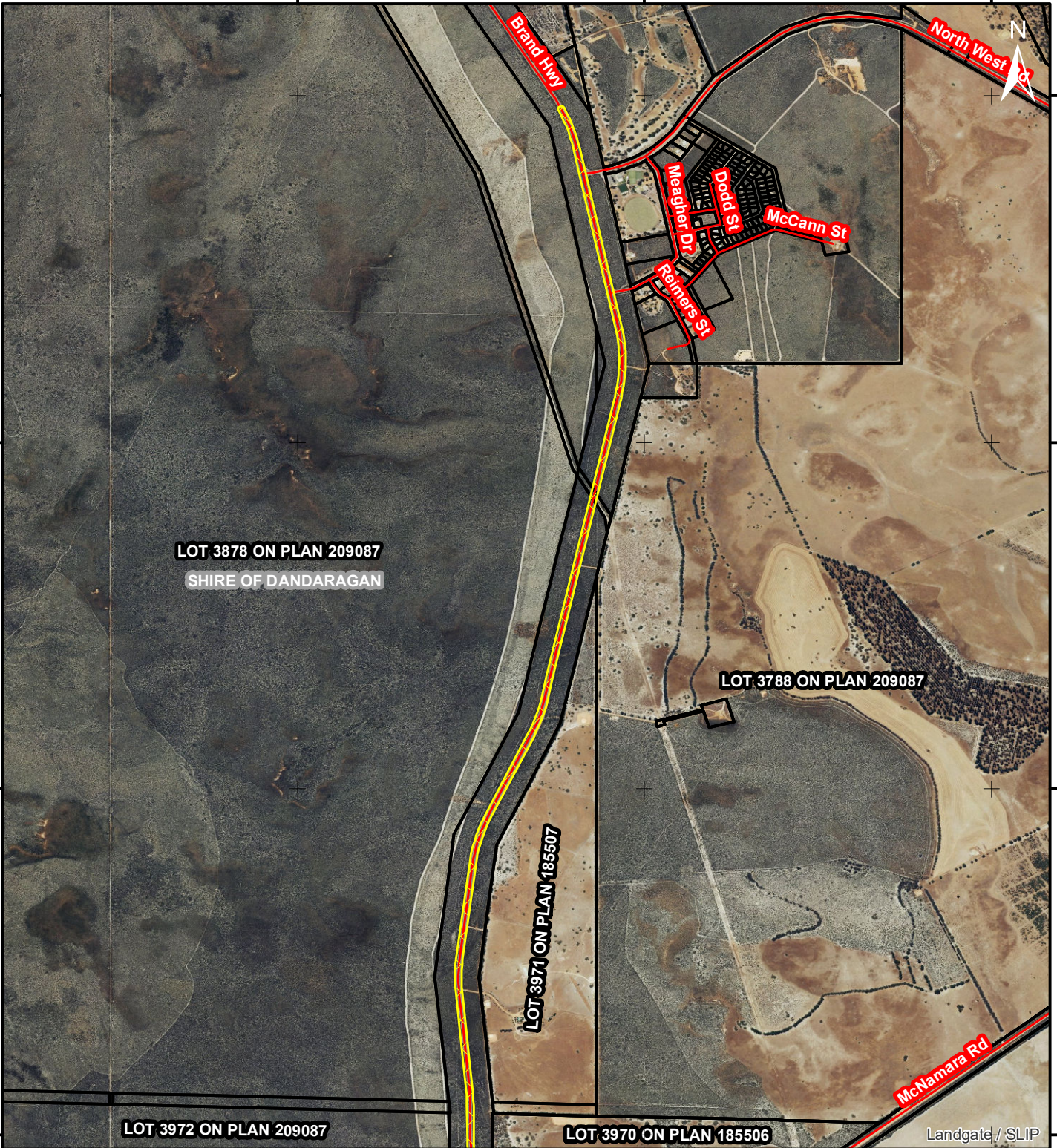
30°24'0"S

30°25'0"S

30°25'0"S

30°26'0"S

30°26'0"S



Legend

Areas approved to clear

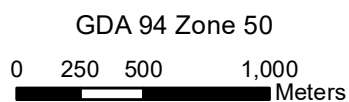
Roads

Cadastre, Land Tenure

Local Government Authorities

Landgate_Subscription_Imagery|WAnow

Officer with delegated authority under section 20 of the Environmental Protection Act 1986



1:30,000



GOVERNMENT OF
WESTERN AUSTRALIA
WA Crown Copyright 2019