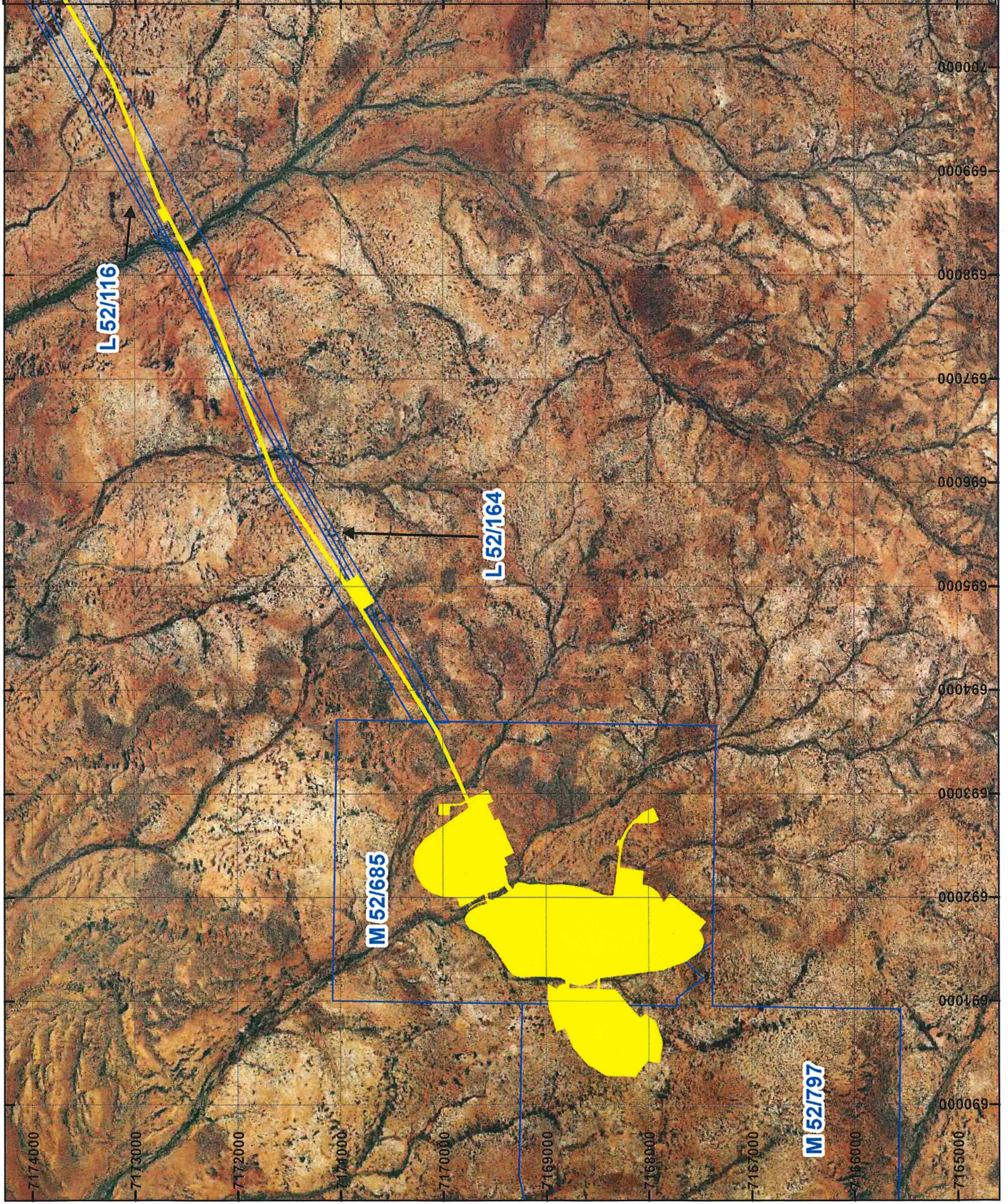


PLAN 7555/2A



LEGEND

□ Mining Tenements

Clearing Instruments

■ Areas Approved to Clear

Orthophotography sourced from Landgate



0 1.8 Kilometers

Scale 1:50,000
(Approximate when reproduced at A4)

Geocentric Datum Australia 1994

Note: the data in this map have not been projected. This may result in geometric distortion or measurement inaccuracies.

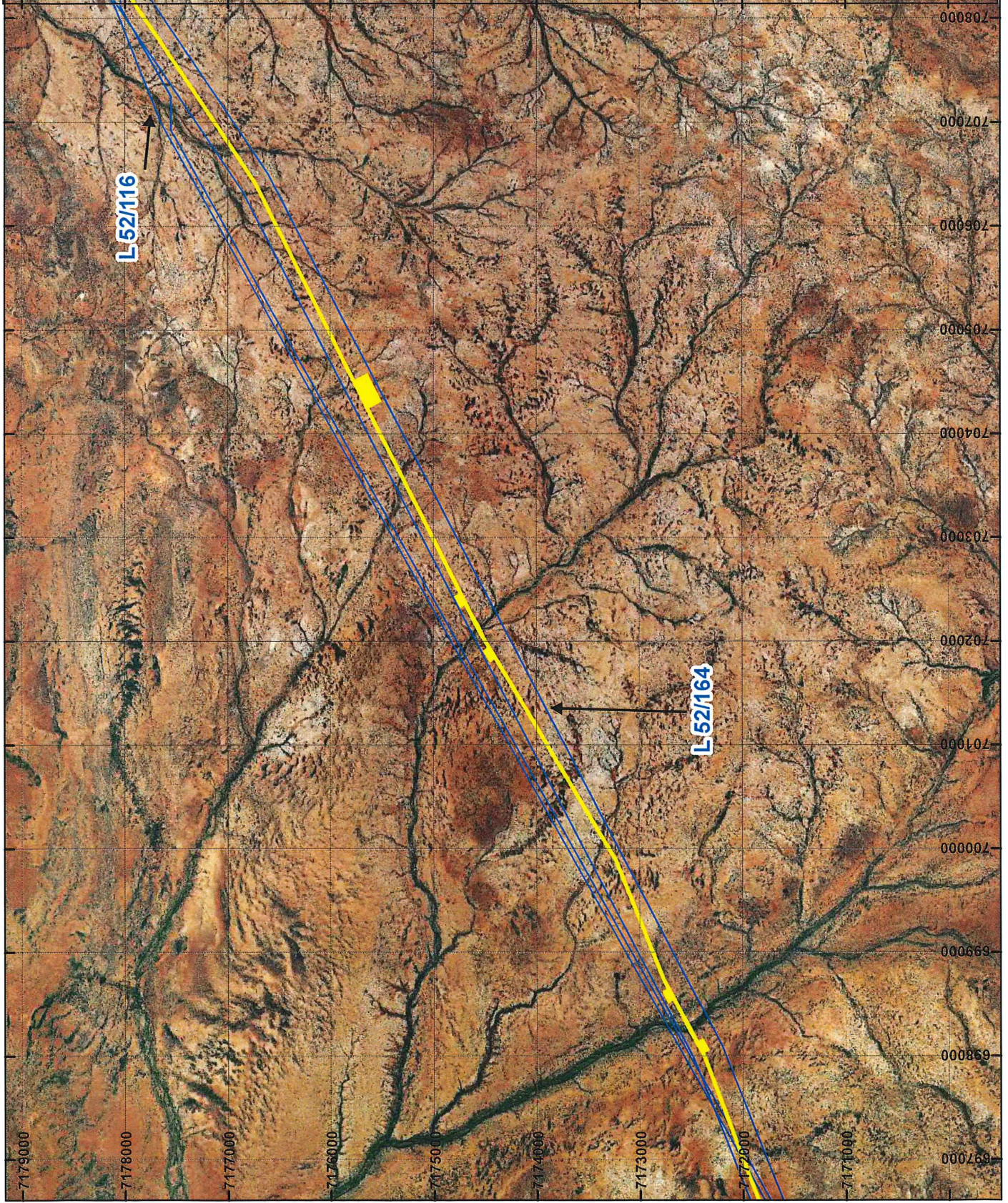
MELISSA HARRISON Date 18/04/2019
Office with delegated authority under Section 20 of the Environmental Protection Act 1986

Information derived from this map should be confirmed with the data custodian acknowledged by the agency acronym in the legend.



WA Crown Copyright 2002

PLAN 7555/2B



LEGEND

□ Mining Tenements

Clearing Instruments

■ Areas Approved to Clear

Orthophotography sourced from Landgate



0 1.8 Kilometers

Scale 1:50 000
(Approximate when reproduced at A4)

Geocentric Datum Australia 1994

Note: the data in this map have not been projected. This may result in geometric distortion or measurement inaccuracies.

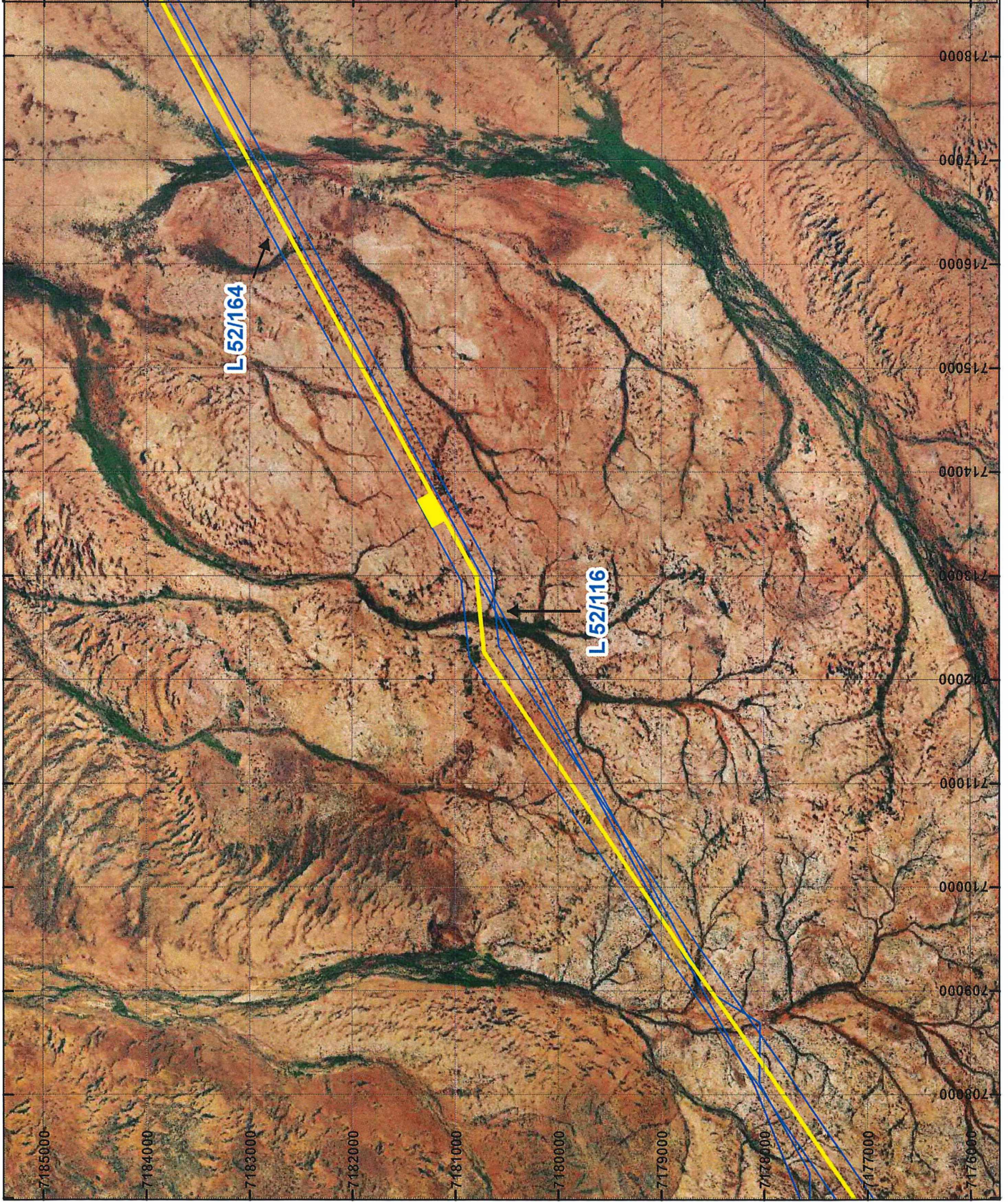
MELISSA HARRISON Date 18/04/2019
Officer with delegated authority under Section 20 of the Environmental Protection Act 1986

Information derived from this map should be confirmed with the data custodian acknowledged by the agency acronym in the legend.



WA Crown Copyright 2002

PLAN 7555/2C



LEGEND

□ Mining Tenements

Clearing Instruments

■ Areas Approved to Clear

Orthophotography sourced from Landgate



0 1.8 Kilometers

Scale 1:50,000

(Approximate when reproduced at A4)

Geocentric Datum Australia 1994

Note: the data in this map have not been projected. This may result in geometric distortion or measurement inaccuracies.

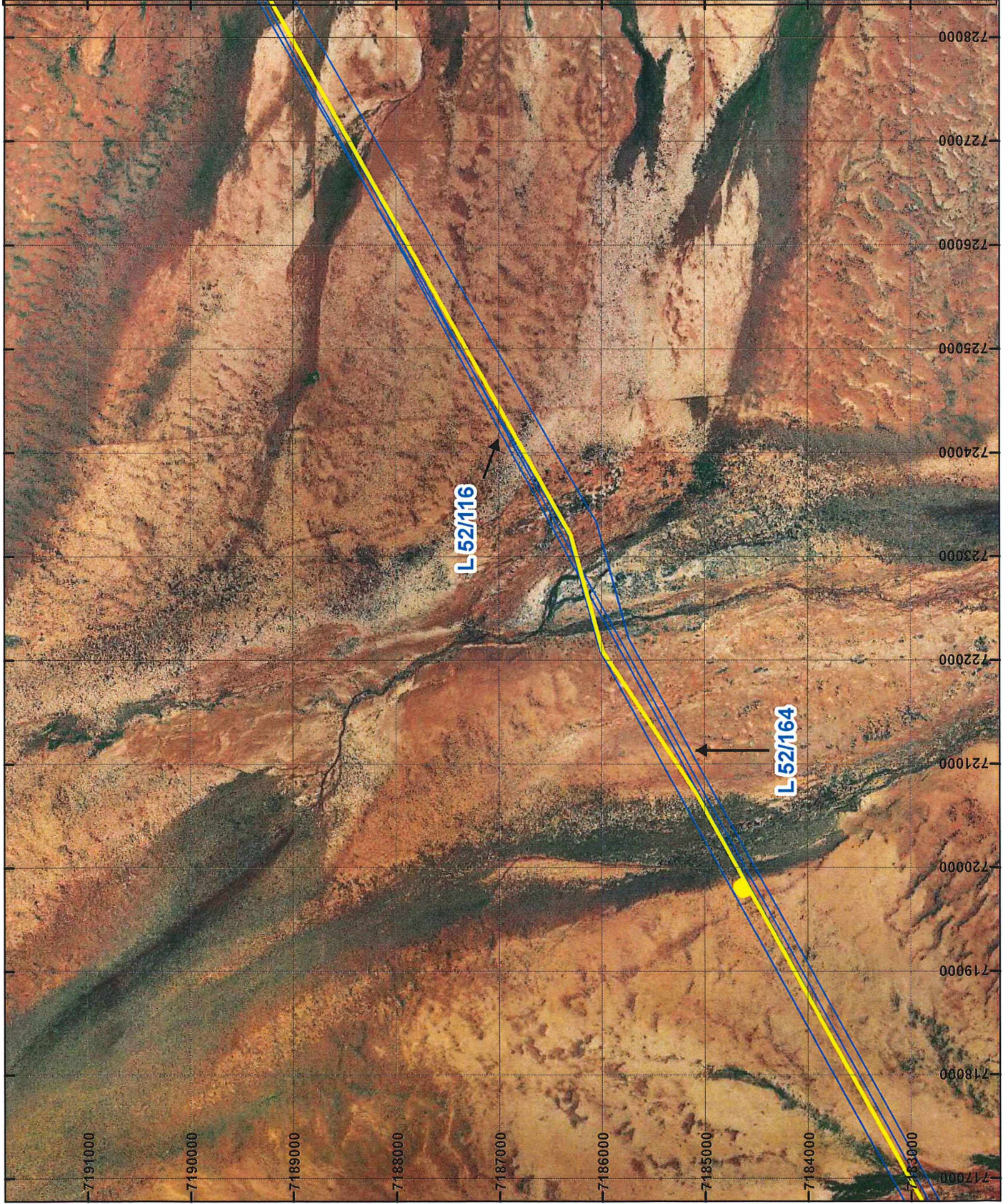
MELISSA HARRISON Date 18/04/2019
Officer with delegated authority under Section 20 of the Environmental Protection Act 1986

Information derived from this map should be confirmed with the data custodian acknowledged by the agency acronym in the legend.



WA Crown Copyright 2002

PLAN 7555/2D



LEGEND

□ Mining Tenements

Clearing Instruments

■ Areas Approved to Clear

Orthophotography sourced from Landgate



0 1.8 Kilometers

Scale 1:50,000

(Approximate when reproduced at A4)

Geocentric Datum Australia 1994

Note: the data in this map have not been projected. This may result in geometric distortion or measurement inaccuracies.

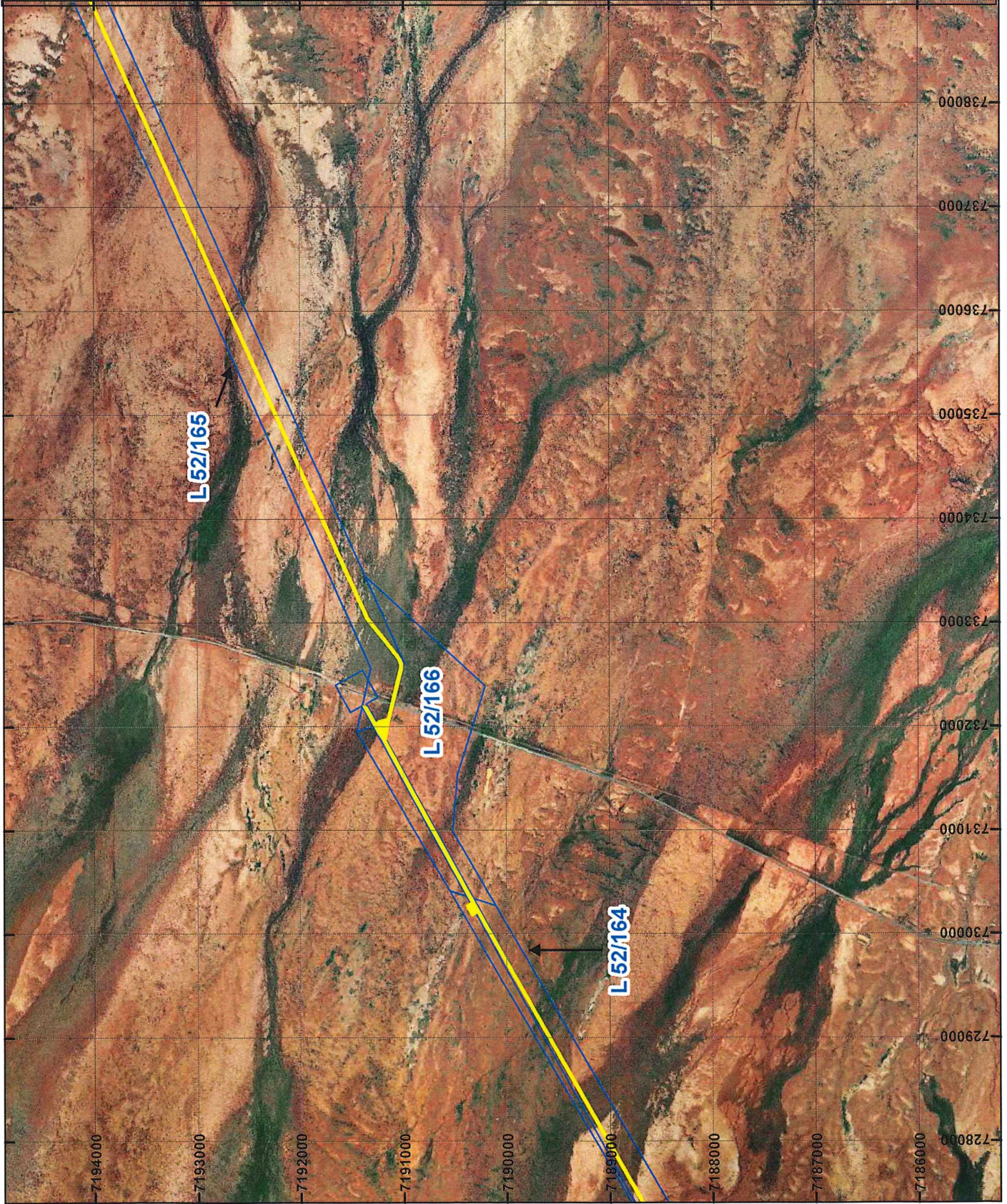
MELISSA HARRISON Date 18/04/2019
Officer with delegated authority under Section 20 of the Environmental Protection Act 1986

Information derived from this map should be confirmed with the data custodian acknowledged by the agency acronym in the legend.



WA Crown Copyright 2002

PLAN 7555/2E



LEGEND

□ Mining Tenements

Clearing Instruments

■ Areas Approved to Clear

Orthophotography sourced from Landgate



0 1.8 Kilometers

Scale 1:50,000

(Approximate when reproduced at A4)

Geocentric Datum Australia 1994

Note: the data in this map have not been projected. This may result in geometric distortion or measurement inaccuracies.

MELISSA HARRISON Date 18/04/2019
Office with delegated authority under Section 20 of
the Environmental Protection Act 1986

Information derived from this map should be confirmed with the data custodian acknowledged by the agency acronym in the legend.



WA Crown Copyright 2002

PLAN 7555/2F



LEGEND

□ Mining Tenements

Clearing Instruments

■ Areas Approved to Clear

Orthophotography sourced from Landgate



0 1.8 Kilometers

Scale 1:50,000

(Approximate when reproduced at A4)

Geocentric Datum Australia 1994

Note: the data in this map have not been projected. This may result in geometric distortion or measurement inaccuracies.

MELISSA HARRISON Date 18/04/2019
Officer with delegated authority under Section 20 of the Environmental Protection Act 1986

Information derived from this map should be confirmed with the data custodian acknowledged by the agency acronym in the legend.



WA Crown Copyright 2002