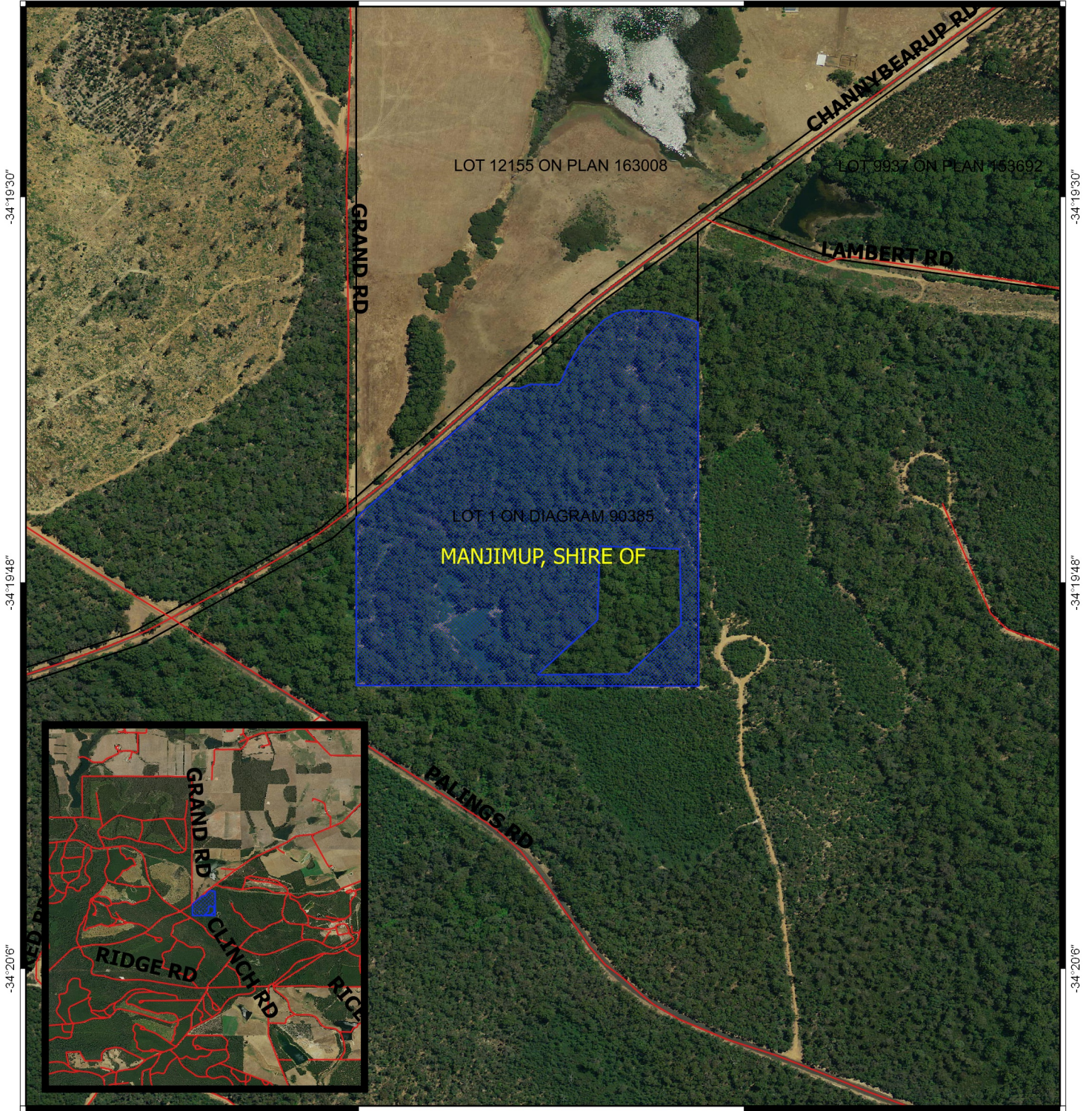


# CPS 7575/1 - Map

116°4'48"

116°5'6"



-34°19'30"

-34°19'30"

-34°19'48"

-34°19'48"

-34°20'6"

-34°20'6"

116°4'48"

116°5'6"

## Legend

 Areas applied to clear

 Roads

 LGA

 Cadastre

Virtual Mosaic (LGATE-V001)



1:5,000

MGA 94

Geocentric Datum of Australia 1994

.....Date.....

Officer with delegated authority under Section 20  
of the Environmental Protection Act 1986



**GOVERNMENT OF  
WESTERN AUSTRALIA**