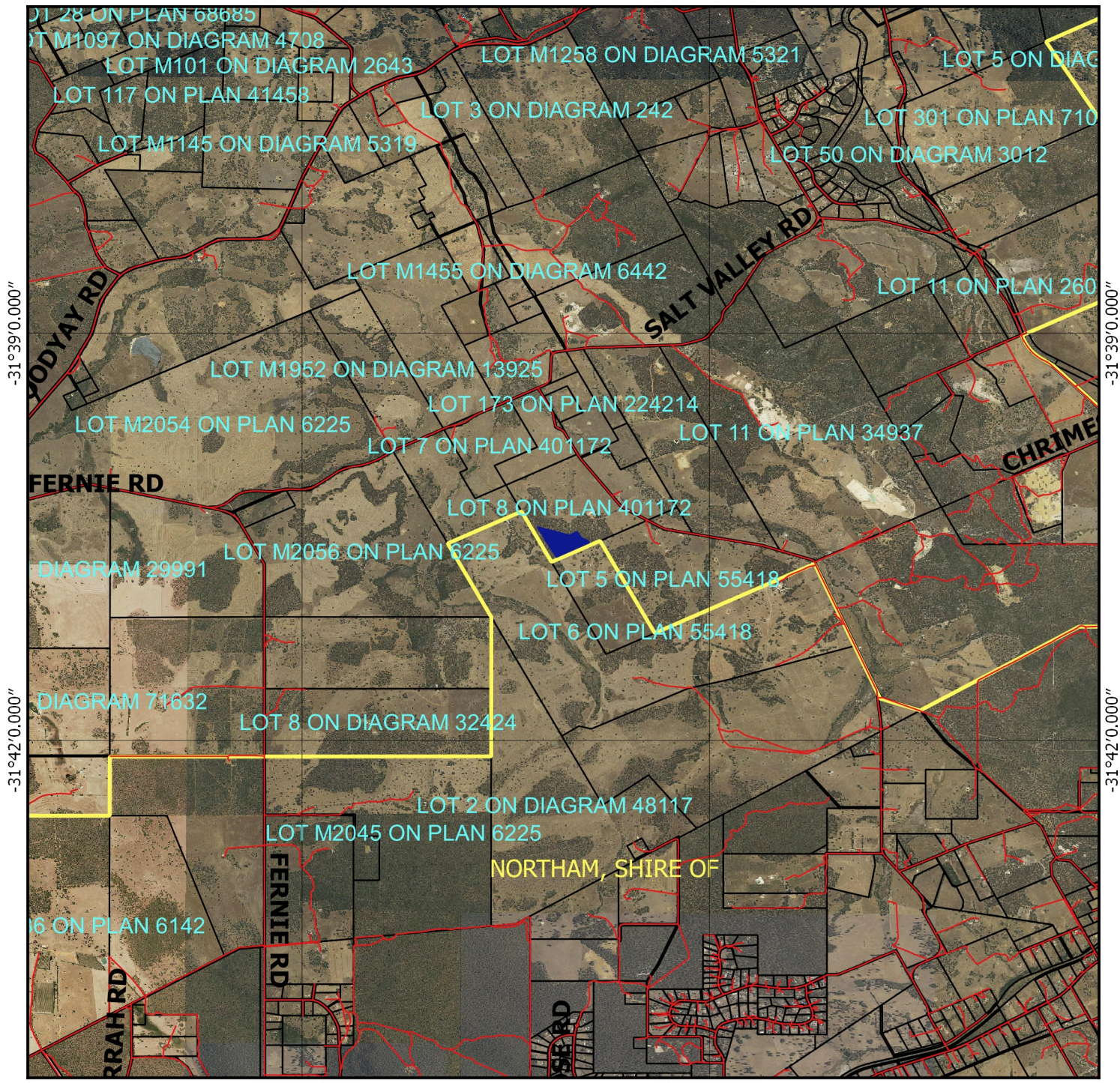


CPS 7592/1 - Context map

116°24'0.000"

116°27'0.000"



116°24'0.000"

116°27'0.000"


-31°39'0.000"

-31°39'0.000"

-31°42'0.000"

-31°42'0.000"

Legend

-  Clearing Instruments Proposal
-  Roads
-  LGA
-  Cadastre
- Virtual Mosaic
- 


 1:50,000
 MGA 94
 Geocentric Datum of Australia 1994

Date.....

Officer with delegated authority under Section 20
of the Environmental Protection Act 1986


 GOVERNMENT OF
 WESTERN AUSTRALIA

500 0 500 1000 1500 2000 m

