

CPS 7618/1 - Map

116°43'30.000"

116°43'48.000"

116°44'6.000"

-34°57'54.000"

-34°57'54.000"

-34°58'12.000"

-34°58'12.000"

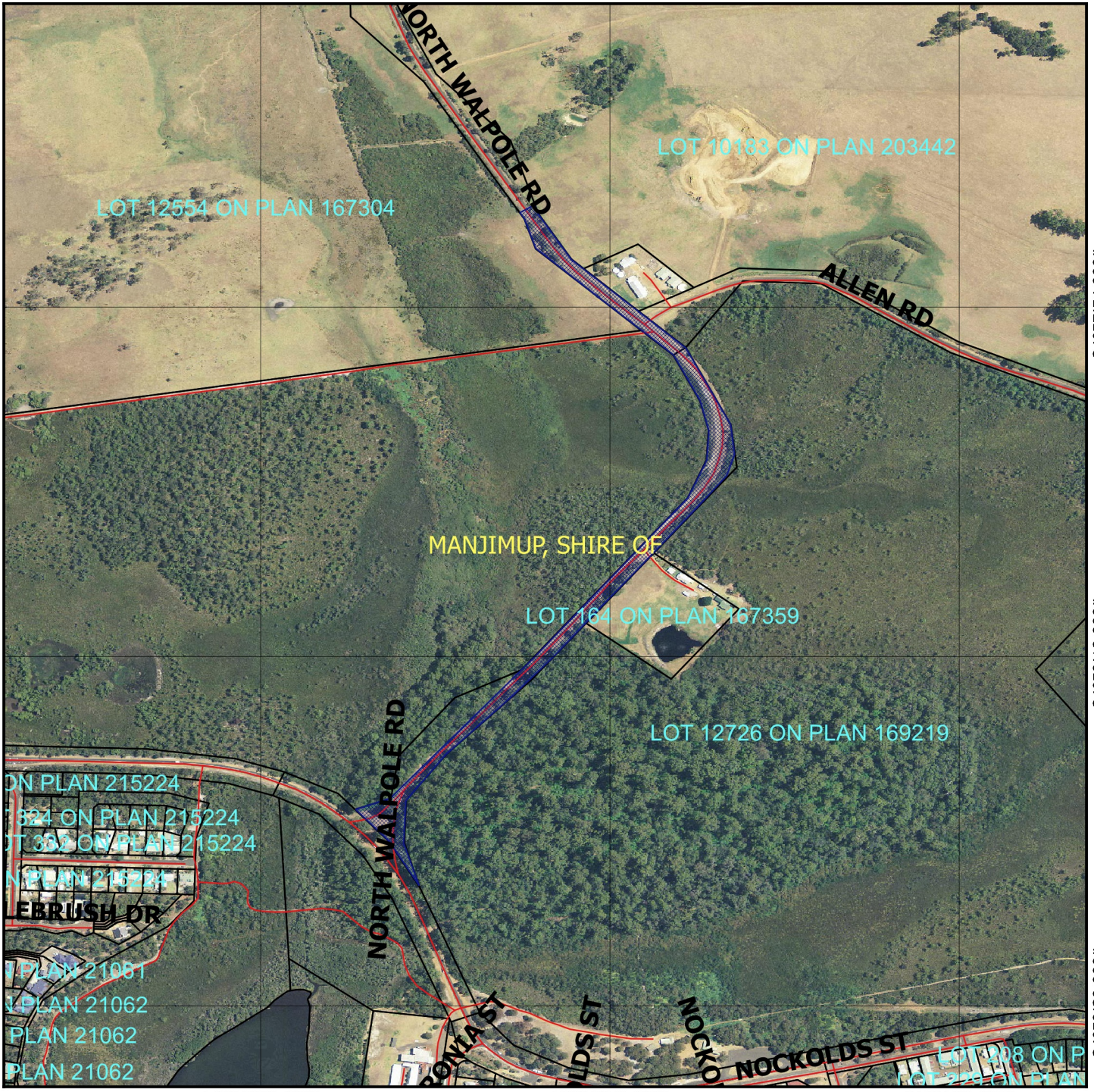
-34°58'30.000"

-34°58'30.000"

116°43'30.000"

116°43'48.000"

116°44'6.000"



Legend

-  Clearing Instruments Proposal
-  Roads
-  LGA
-  Cadastre
-  Virtual Mosaic

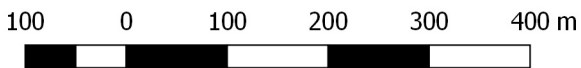


1:5,563

MGA 94
Geocentric Datum of Australia 1994

.....Date.....

Officer with delegated authority under Section 20
of the Environmental Protection Act 1986



GOVERNMENT OF
WESTERN AUSTRALIA