

Legend

- Project area boundary
- Cadastre
- Study area boundary
- GHD survey boundary
- Site plan

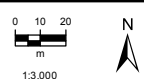
Data source: GHD, Landgate, MRWA (2016)

Map no: 2202942A_GIS_001_A

Author: SH

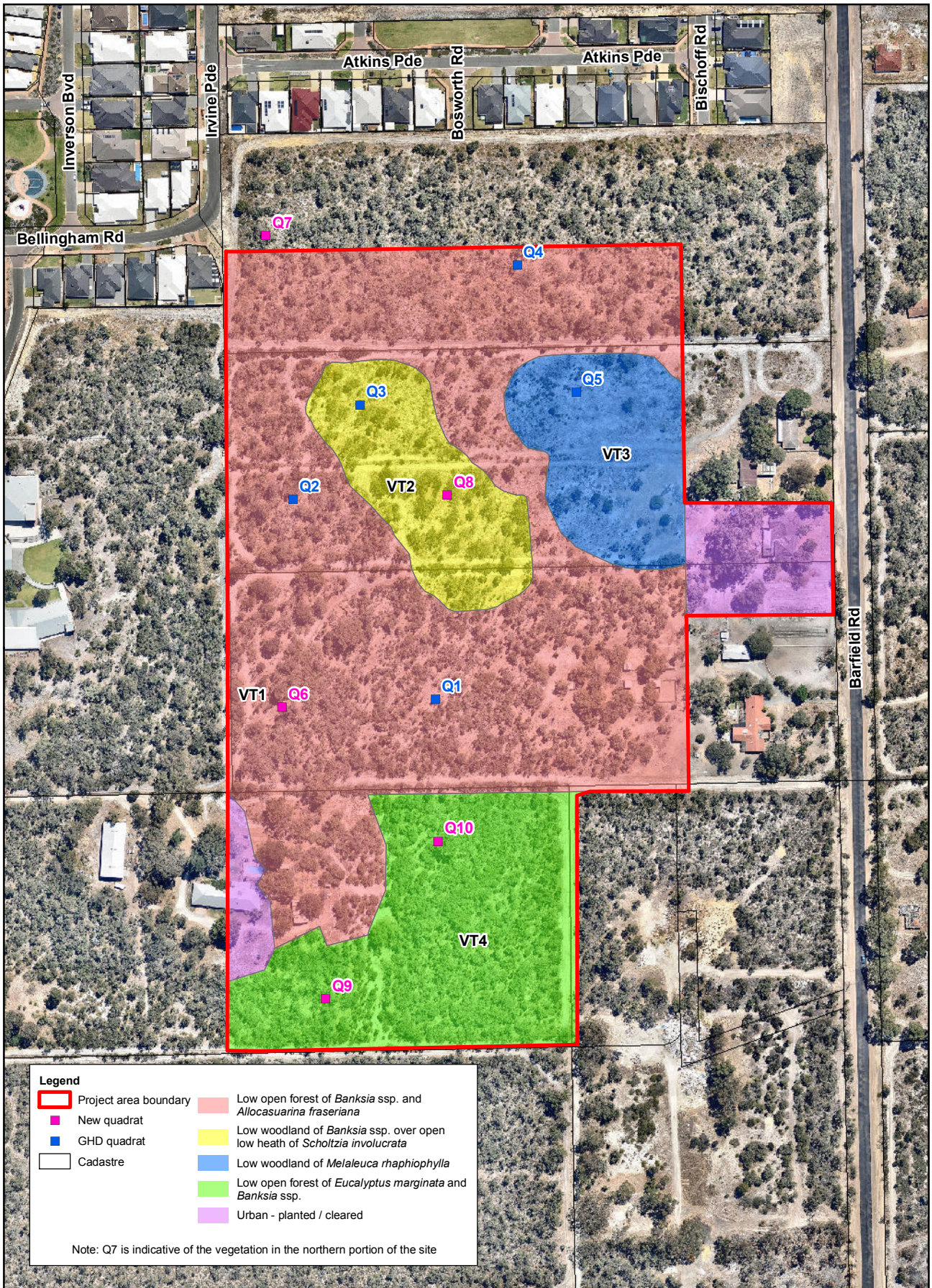
Approved by: CK

Date: 6/07/2016



Scale ratio correct when printed at A4
 Projection: Transverse Mercator
 Coord sys: GDA 1994 MGA Zone 50

Environmental Consultancy Services
Hammond Park
Figure 1
Project study area



Legend

Project area boundary	Low open forest of <i>Banksia</i> ssp. and <i>Allocasuarina fraseriana</i>
New quadrat	Low woodland of <i>Banksia</i> ssp. over open low heath of <i>Scholtzia involucreta</i>
GHD quadrat	Low woodland of <i>Melaleuca raphiophylla</i>
Cadastre	Low open forest of <i>Eucalyptus marginata</i> and <i>Banksia</i> ssp.
	Urban - planted / cleared

Note: Q7 is indicative of the vegetation in the northern portion of the site



Data source: GHD, Landgate, MRWA (2016)

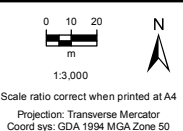
© Parsons Brinckerhoff Australia Pty Ltd (PBT) Copyright in the drawings, information and data contained herein is the property of PBT. This document and the information are solely for the use of the authorised recipient and the document may not be copied, stored or disseminated without the prior written consent of PBT. PBT makes no representation, warranty or liability for any third party who may use or rely upon the information or the information. ACS Certified Quality System to ISO 9001:2015. APPROVED FOR AND ON BEHALF OF Parsons Brinckerhoff Australia Pty Ltd. Drawings provided under license from ESR.

Map no: 2202942A_GIS_002_A

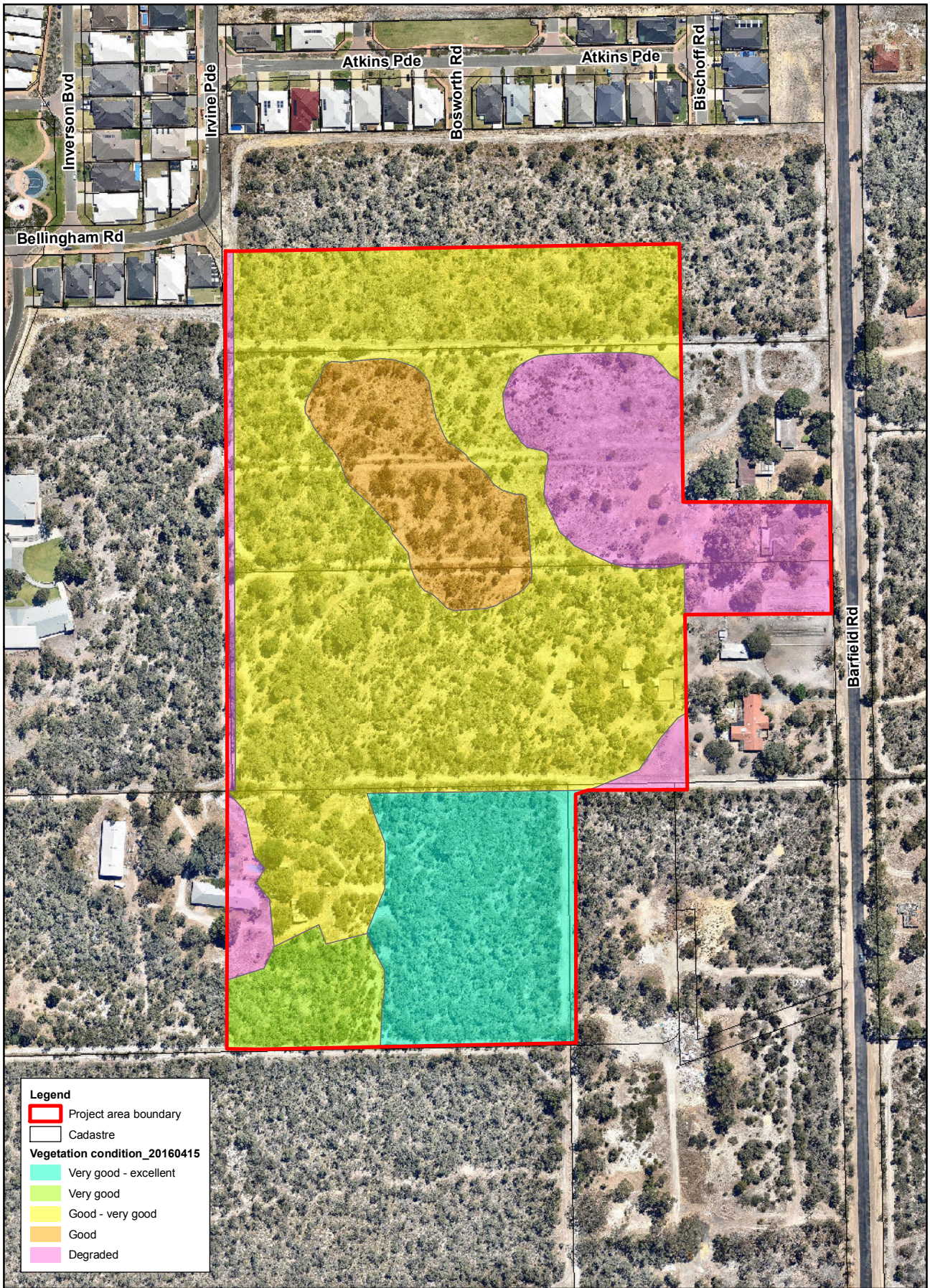
Author: SH

Approved by: CK

Date: 6/07/2016



Environmental Consultancy Services
Hammond Park
Figure 2
Vegetation type in the project study area



Legend

- Project area boundary
- Cadastre

Vegetation condition_20160415

- Very good - excellent
- Very good
- Good - very good
- Good
- Degraded



Data source: GHD, Landgate, MRWA (2016)

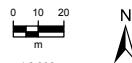
© Parsons Brinckerhoff Australia Pty Ltd (PBA) Copyright in the drawings, information and data contained herein is the property of PBA. This document and the information are solely for the use of the authorised recipient and the document may not be copied, stored or transmitted in any form or by any means, electronic or mechanical, without the prior written permission of PBA. PBA makes no representation, warranty or assumption of responsibility for any third party who may use any copies of this document or the information. ACS Certified Quality System to ISO 9001:2015 APPROVED FOR AND ON BEHALF OF Parsons Brinckerhoff Australia Pty Ltd. Drawings provided under license from ESR.

Map no: 2202942A_GIS_003_A

Author: SH

Approved by: CK

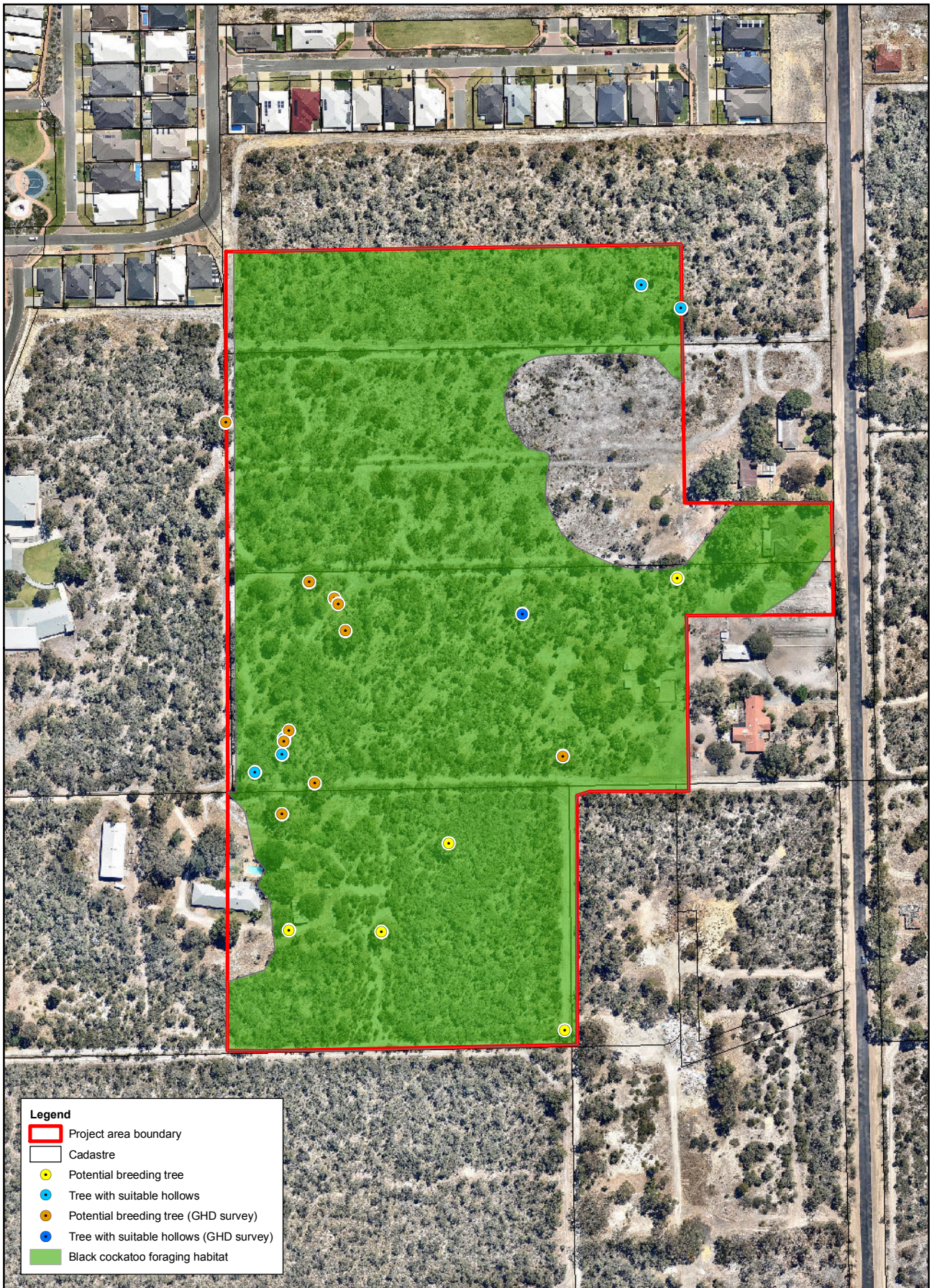
Date: 6/07/2016



1:3,000

Scale ratio correct when printed at A4
Projection: Transverse Mercator
Coord sys: GDA 1994 MGA Zone 50

Environmental Consultancy Services
Hammond Park
Figure 3
Vegetation condition in the project study area



Legend

- Project area boundary
- Cadastre
- Potential breeding tree
- Tree with suitable hollows
- Potential breeding tree (GHD survey)
- Tree with suitable hollows (GHD survey)
- Black cockatoo foraging habitat



Data source: GHD, Landgate, MRWA (2016)

© Parsons Brinckerhoff Australia Pty Ltd ("PB"). Copyright in the drawings, information and data contained in this information is the property of PB. This document and the information are solely for the use of the authorised recipient and the document may not be copied, stored or otherwise used in whole or part for any purpose other than that which it was supplied by PB. PB makes no representation, undertaking no duty and accepts no responsibility to any third party who may rely on any information contained in this information. ACS Certified Quality System to ISO 9001:2015. APPROVED FOR AND ON BEHALF OF Parsons Brinckerhoff Australia Pty Ltd. Drawings provided under license from GHD.

Map no: 2202942A_GIS_004_A

Author: SH

Approved by: CK

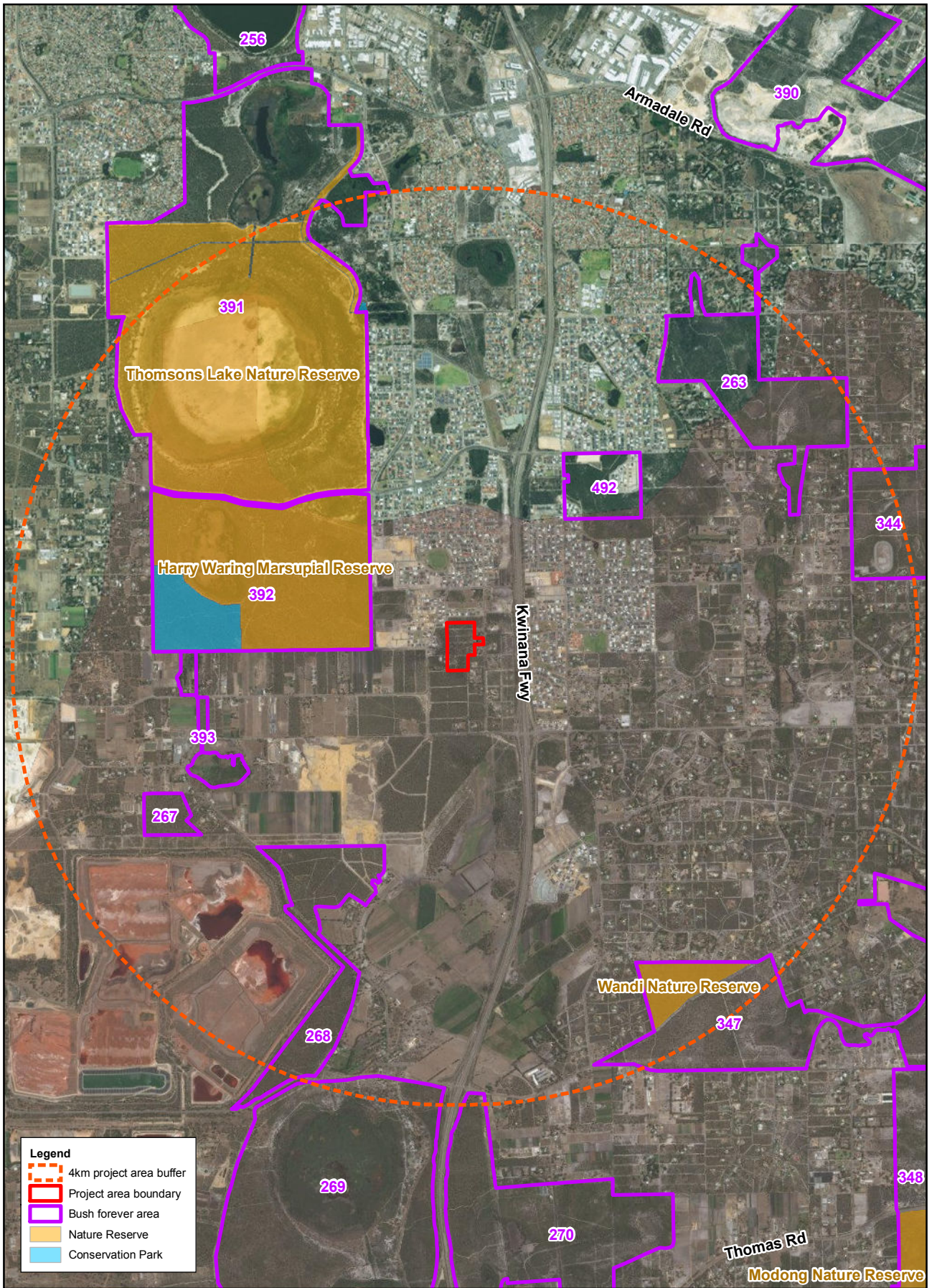
Date: 6/07/2016



1:3,000

Scale ratio correct when printed at A4
Projection: Transverse Mercator
Coord sys: GDA 1994 MGA Zone 50

**Environmental Consultancy Services
Hammond Park
Figure 4
Significant fauna habitat in the project study area**



Legend

- 4km project area buffer
- Project area boundary
- Bush forever area
- Nature Reserve
- Conservation Park



Data source: Landgate, MRWA, DOP, DPAW, ESRI (2016)

© Parsons Brinckerhoff Australia Pty Ltd ("PB"). Copyright in the drawings, information and data contained in this information is the property of PB. This document and the information are solely for the use of the authorised recipient and the document may not be copied, stored or transmitted in any form or by any means, electronic or mechanical, without the prior written permission of PB. PB makes no representation, warranty or guarantee as to the accuracy or completeness of any data provided in this document and the information. PB is not responsible for any third party who may use or rely upon the information in this document. PB is a member of the Andersen Group of Companies. Andersen Group of Companies is a member of the Andersen Group of Companies. Andersen Group of Companies is a member of the Andersen Group of Companies.

Map no: 2202942A_GIS_005_A

Author: SH

Approved by: CK

Date: 6/07/2016

0 230 460
m

1:50,000

Scale ratio correct when printed at A4

Projection: Transverse Mercator
Coord sys: GDA 1994 MGA Zone 50

**Environmental Consultancy Services
Hammond Park
Figure 5
Black cockatoo connectivity**

380000

390000

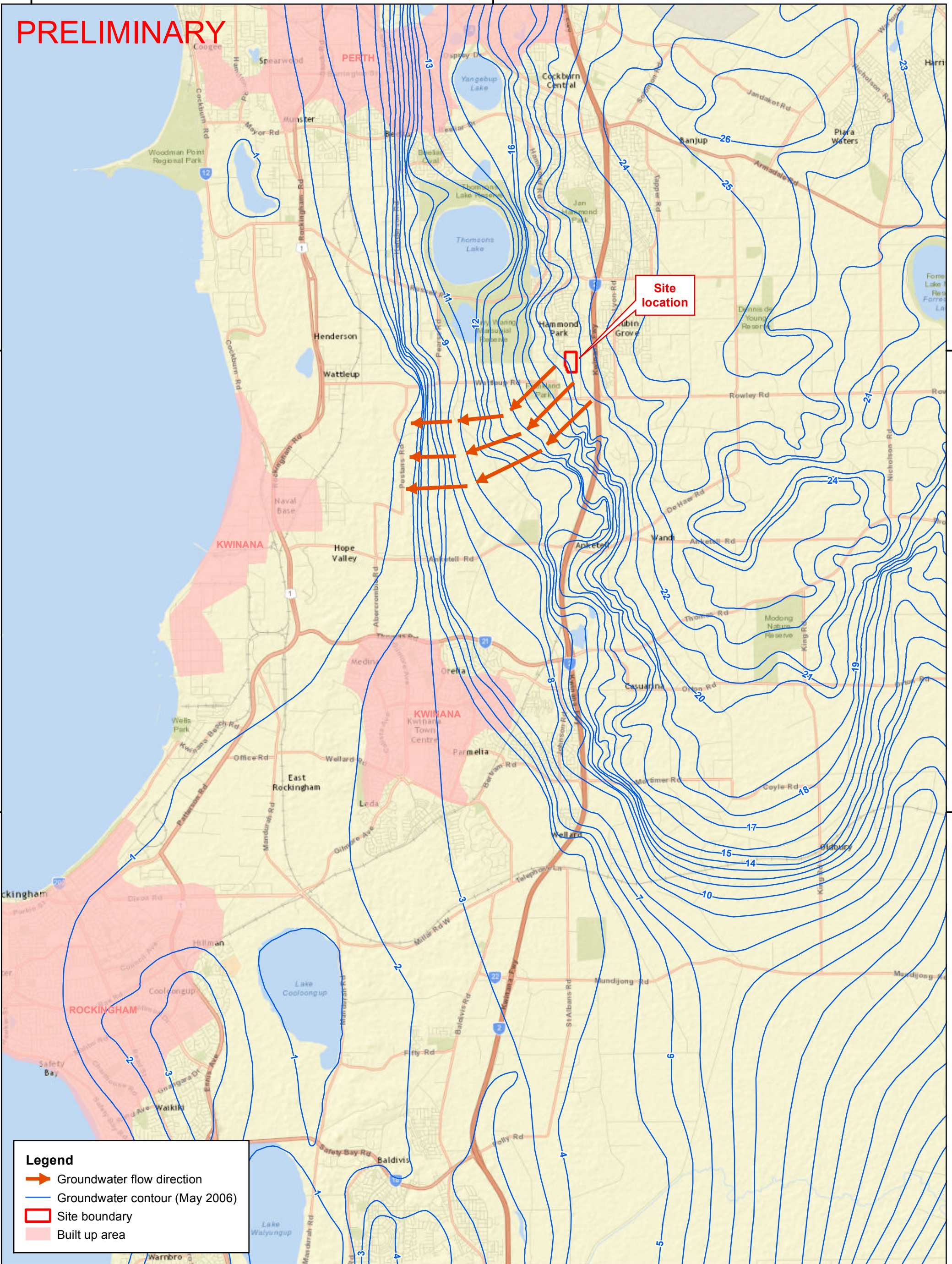
PRELIMINARY

6440000

6440000

6430000

6430000



Legend

- Groundwater flow direction
- Groundwater contour (May 2006)
- Site boundary
- Built up area

Map: 2202942A_GIS_001_A1	Author: RP		 1:75,000 Coordinate system: GDA 1994 MGA Zone 50 Scale ratio correct when printed at A3	<p>Hammond Park and Surrounding wetlands Systems Figure 1 Groundwater contour plan</p>
Date: 29/07/2016	Approved by: -			
Data source: Esri, DigitalGlobe, Department of Water WA		<p><small>© WSP Parsons Brinckerhoff - Asia Pacific (WSP PB). Copyright in the drawings, information and data recorded is the property of WSP PB. This document and the information are solely for the use of the authorised recipient and this document may not be used, copied or reproduced in whole or part for any purpose other than that which it was supplied by WSP PB. WSP PB makes no representation, undertakes no duty and accepts no responsibility to any third party who may use or rely upon this document or the information. NCSI Certified Quality System to ISO 9001. © APPROVED FOR AND ON BEHALF OF WSP Parsons Brinckerhoff - Asia Pacific.</small></p>		

E:\Hassell\Projects\Maps\2202942A_GIS_001_A1.mxd

Hassell

www.wsp-pb.com