

CPS 7619/1 - Map

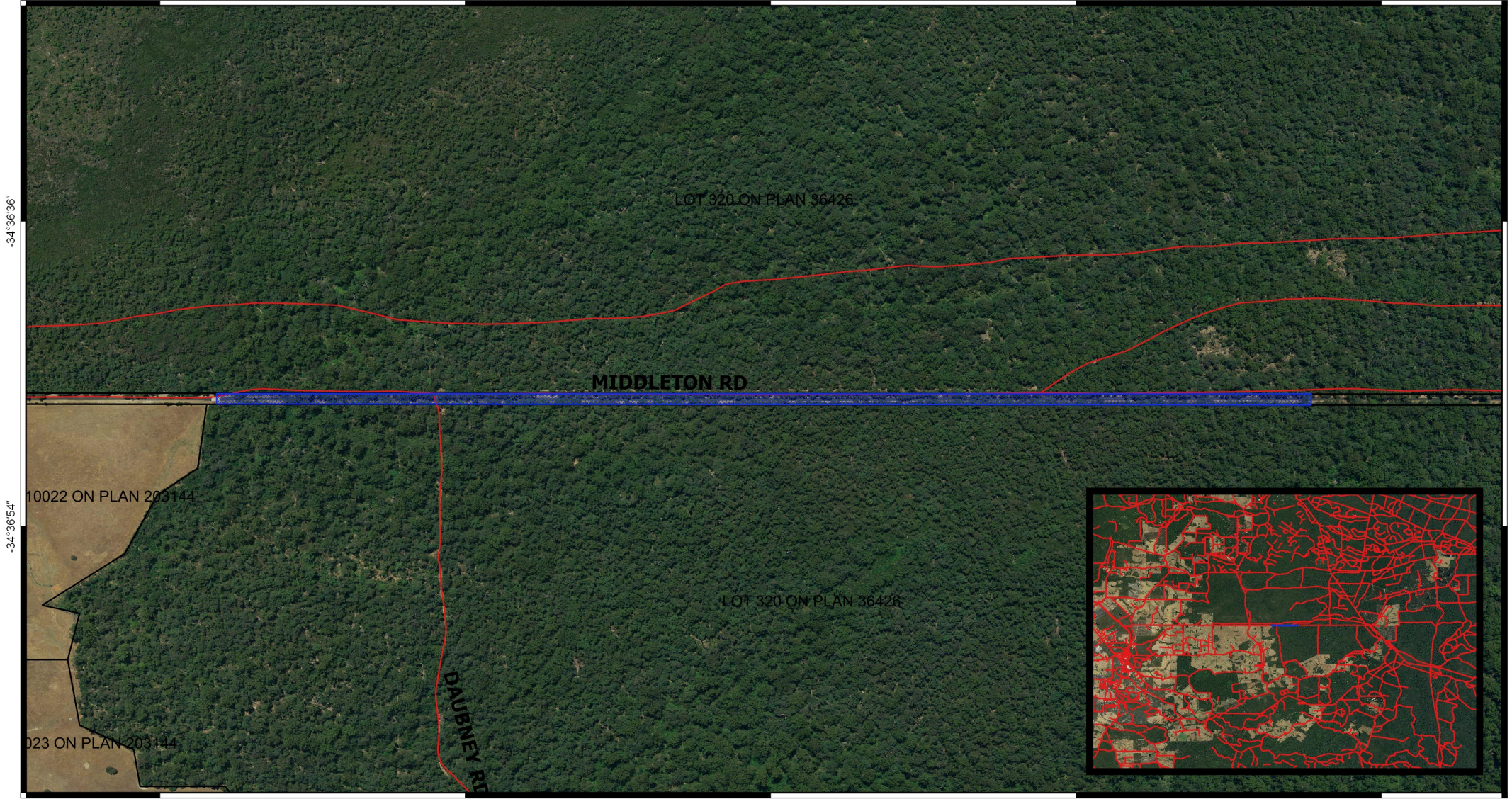
116°13'12"

116°13'30"

116°13'48"

116°14'6"

116°14'24"



116°13'12"






116°13'30"

116°13'48"

116°14'6"

116°14'24"

Legend

-  Areas applied to clear
-  Roads
-  LGA
-  Cadastre
-  Virtual Mosaic (LGATE-V001)



MGA 94
Geocentric Datum of Australia 1994

1:6,000

.....Date.....

Officer with delegated authority under Section 20
of the Environmental Protection Act 1986



**GOVERNMENT OF
WESTERN AUSTRALIA**