

CPS 7631/2 - Map

115°59'42.000"E

116°0'0.000"E

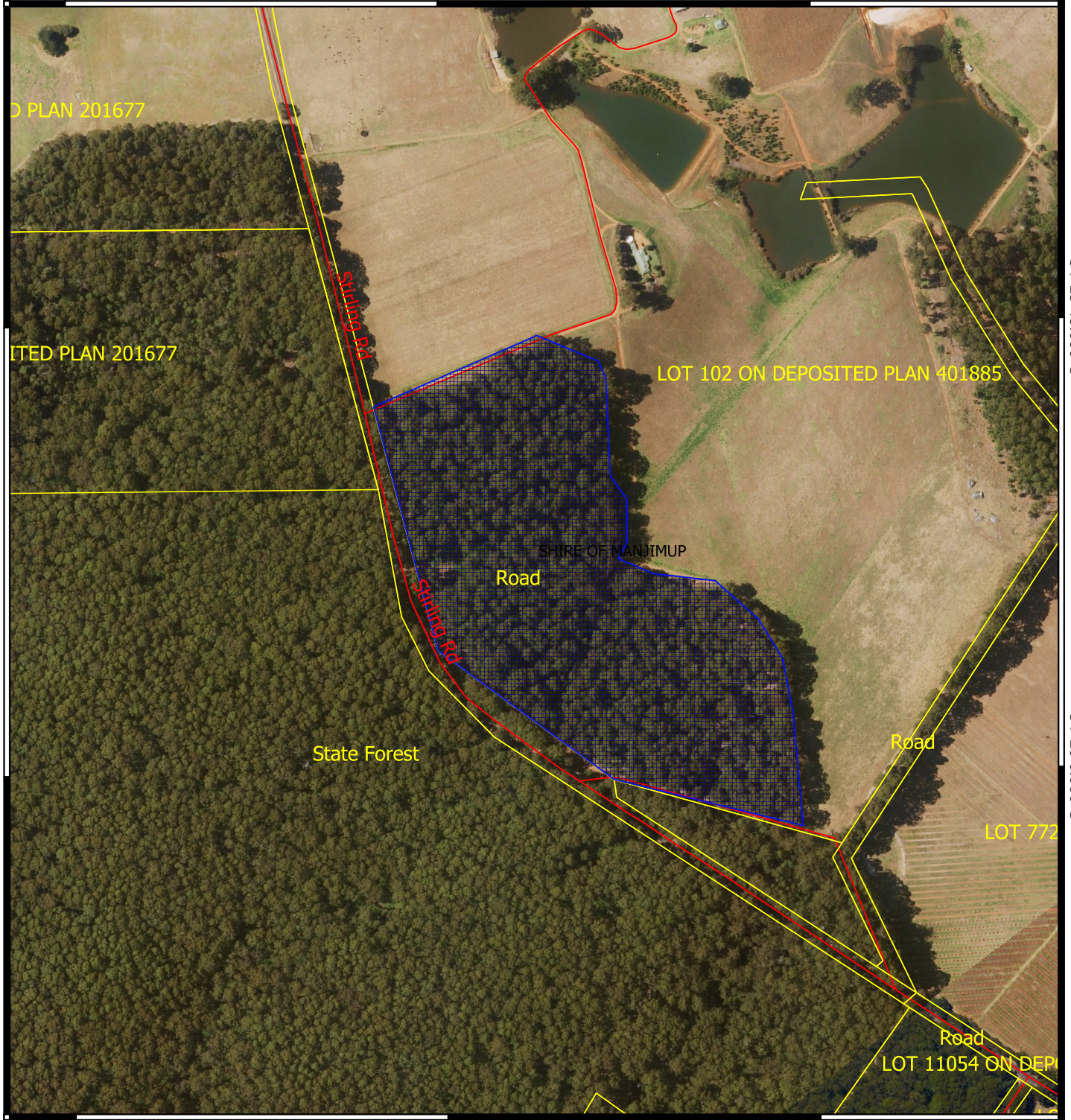
116°0'18.000"E

34°25'48.000"S

34°25'48.000"S

34°26'6.000"S

34°26'6.000"S

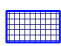
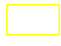




115°59'42.000"E

116°0'0.000"E

116°0'18.000"E

Legend

-  CPS areas applied to clear
-  Cadastre - LGATE 218
-  Local Government Authorities
-  Road centrelines

MGA 94
Geocentric Datum of Australia 1994

0 100 200 300 400 500 m



GOVERNMENT OF
WESTERN AUSTRALIA