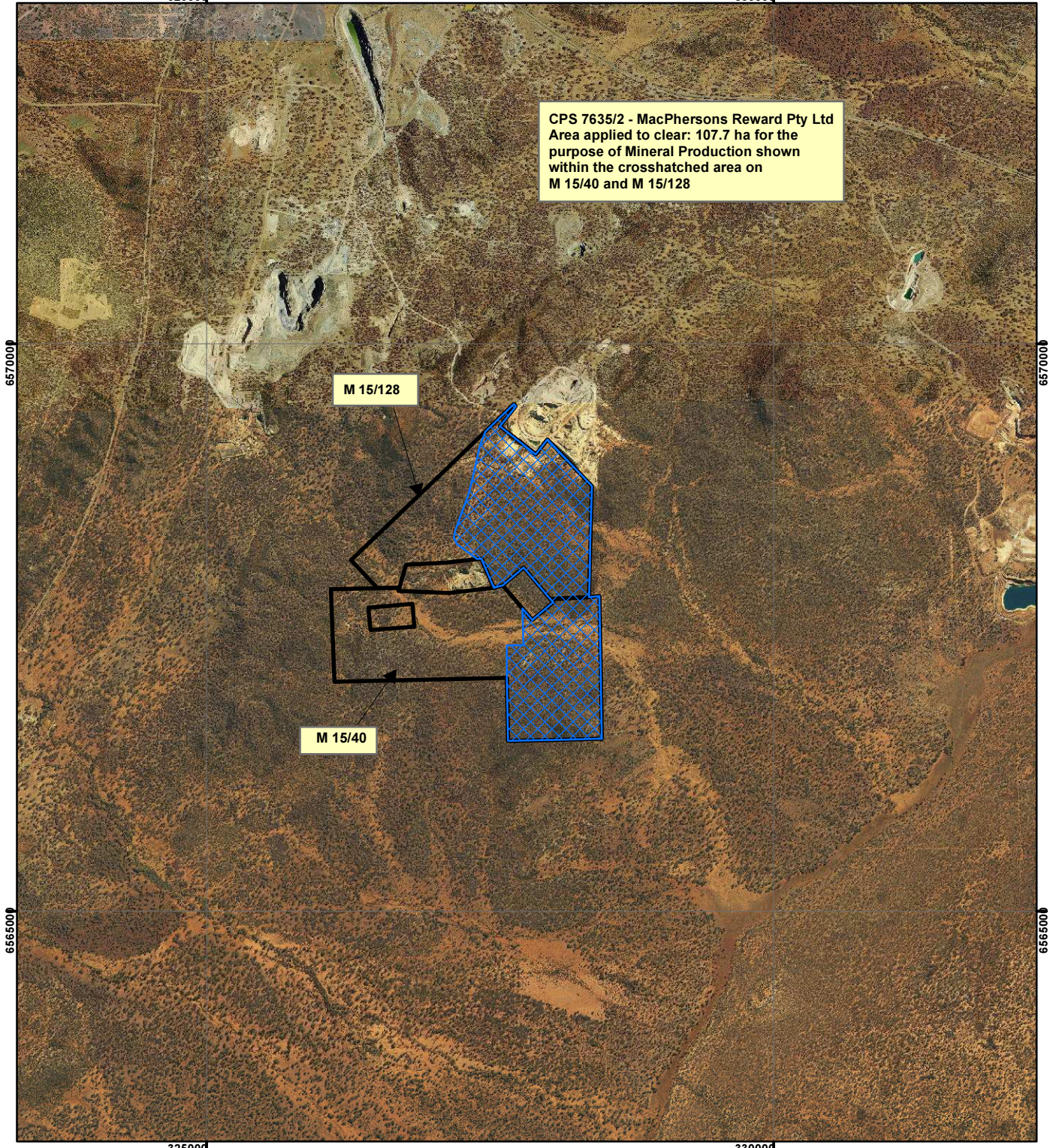


7635/2 - MacPhersons Reward Pty Ltd


32500g

33000g


CPS 7635/2 - MacPhersons Reward Pty Ltd
Area applied to clear: 107.7 ha for the
purpose of Mineral Production shown
within the crosshatched area on
M 15/40 and M 15/128




Legend

 Clearing Instruments


TENID

 M 1500040

 M 1500128

Virtual Mosaic

Aerial - Kalgoorlie 2013
Aerial - Yilmia 2010


0 2,080
Metres
Scale 1:50,000

Geocentric Datum Australia 1994
Note: the data in this map have not been projected. This may result in geometric distortion or measurement inaccuracies.

..... Date

Officer with delegated authority under Section 20 of the Environmental Protection Act 1986

Information derived from this map should be confirmed with the data custodian acknowledged by the agency acronym in the legend.

