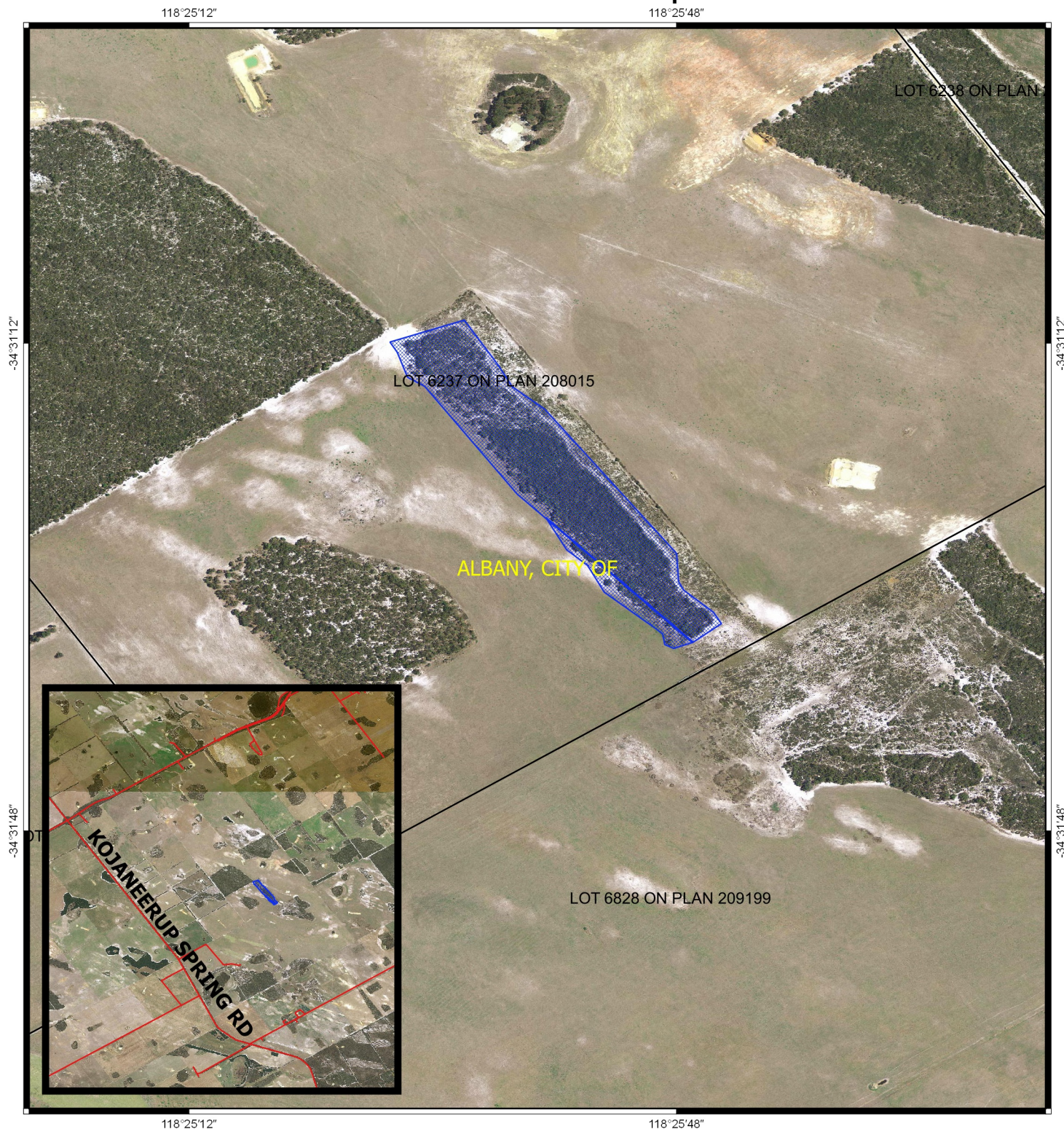





# CPS 7683/1 - Map



## Legend

-  Areas applied to clear
  -  LGA
  -  Cadastre
- Virtual Mosaic (LGATE-V001)



1:7,750  
MGA 94  
Geocentric Datum of Australia 1994

.....Date.....

Officer with delegated authority under Section 20  
of the Environmental Protection Act 1986



GOVERNMENT OF  
WESTERN AUSTRALIA