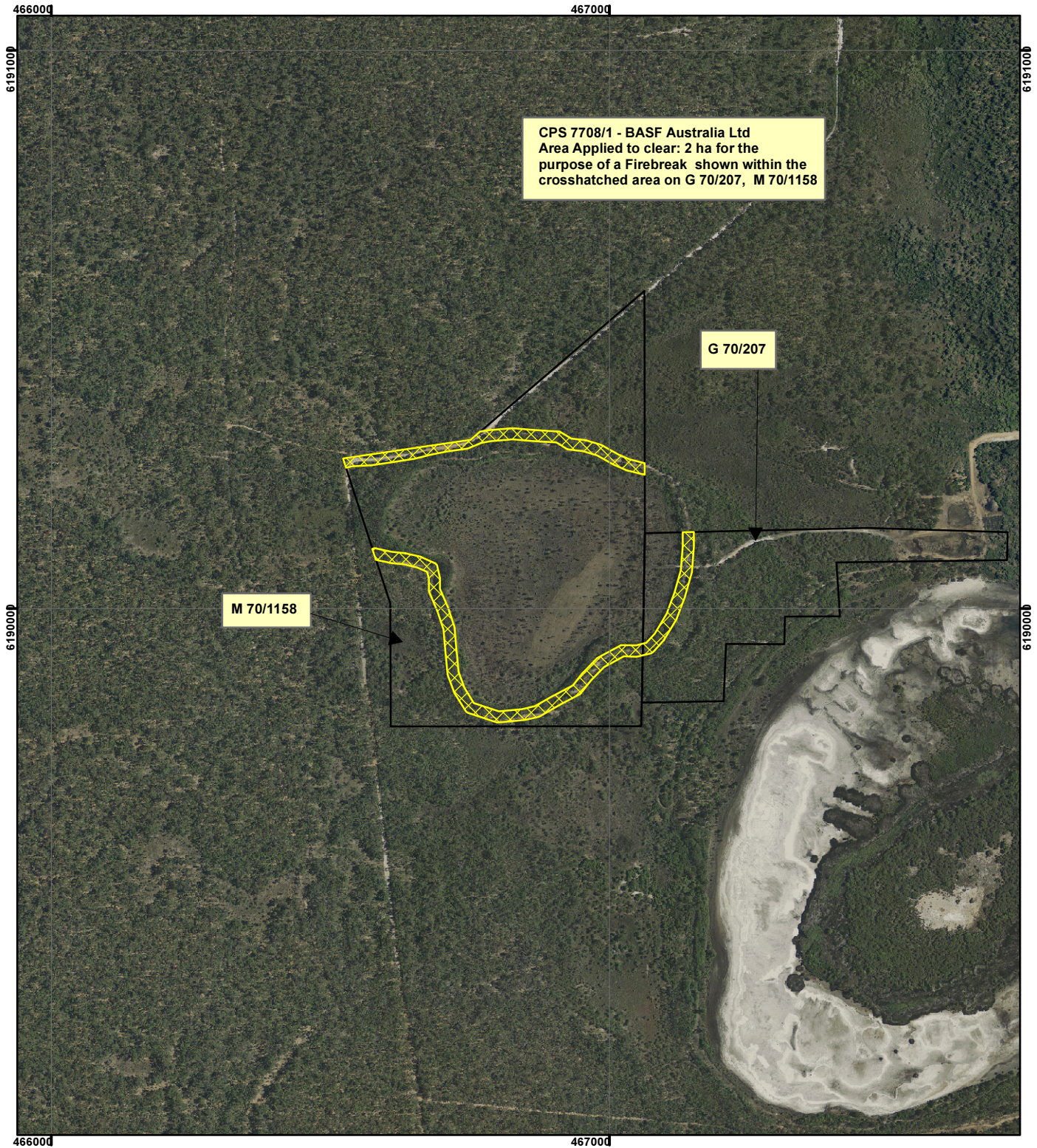


CPS 7708/1 - BASF Australia Ltd




CPS 7708/1 - BASF Australia Ltd
 Area Applied to clear: 2 ha for the
 purpose of a Firebreak shown within the
 crosshatched area on G 70/207, M 70/1158

G 70/207

M 70/1158

Legend

 Clearing Instruments

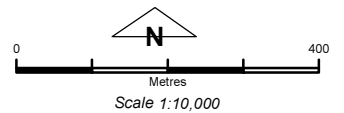
Mining Tenements

FMT_TENID

 G 70/207

 M 70/1158

Tonebridge Aerial Mosaic January 2014



Geocentric Datum Australia 1994

Note: the data in this map have not been projected. This may result in geometric distortion or measurement inaccuracies.

..... Date

Officer with delegated authority under Section 20 of the Environmental Protection Act 1986

Information derived from this map should be confirmed with the data custodian acknowledged by the agency acronym in the legend.

