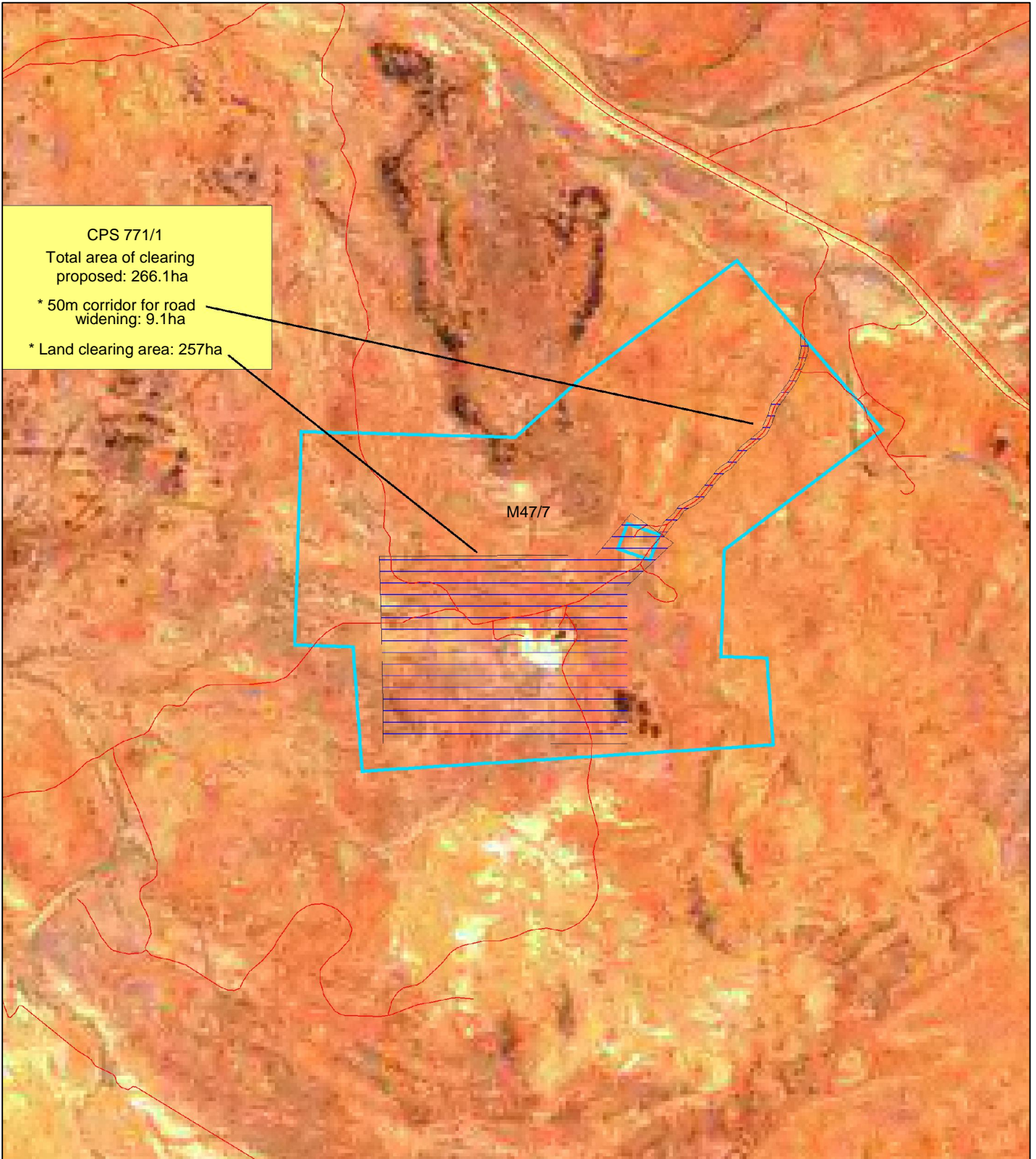


CPS 771/1



CPS 771/1
Total area of clearing proposed: 266.1ha
* 50m corridor for road widening: 9.1ha
* Land clearing area: 257ha

M47/7

LEGEND

- Land parcels related to instrument
- Clearing Instruments
 - Areas Applied to Clear
 - Areas Subject to Conditions
 - Areas Approved to Clear
- Road Centrelines - DLI 110/04
- Coastline - DLI 110/06
- Towns - DLI 8/04
- Western Australia ETM 25m 543 - AGO 04



0 1 km

Scale 1:40000
(Approximate when reproduced at A4)

Geocentric Datum Australia 1994

Note: the data in this map have not been projected. This may result in geometric distortion or measurement inaccuracies.

..... Date

Information derived from this map should be confirmed with the data custodian acknowledged by the agency acronym in the legend.