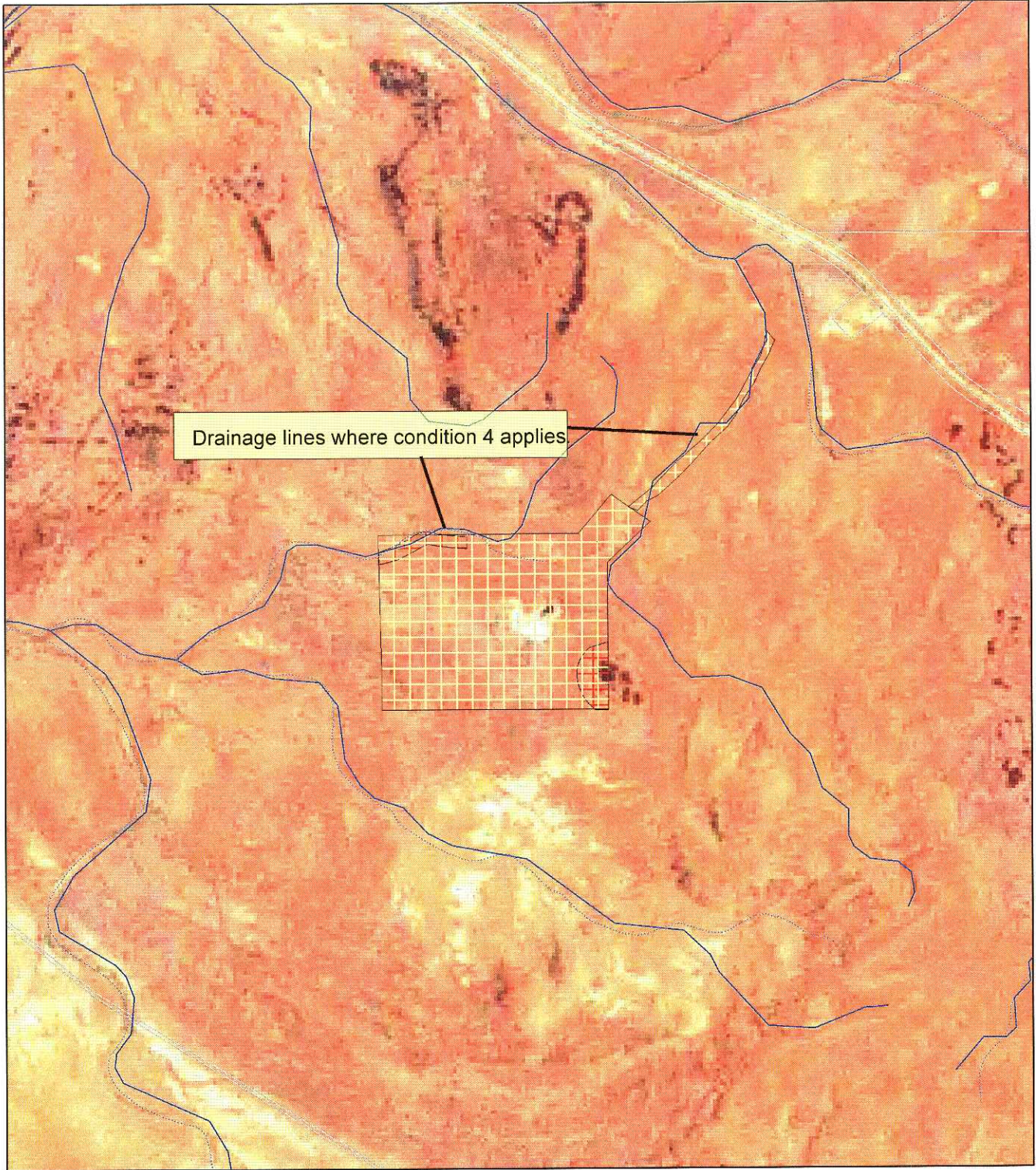
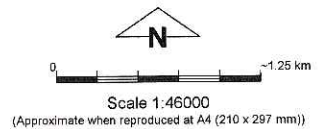


# PLAN 771/2



## LEGEND

- |  |  |   |  |
|--|--|---|--|
| <ul style="list-style-type: none"> <li>□ Cadastre - DLI 1/12/05</li> <li>Western Australia ETM 25m 543 - AGO 04</li> <li>Clearing Instruments_1</li> <li>▤ Areas Subject to Conditions</li> <li>□ Areas Approved to Clear</li> <li>Hydrography, linear - DOE 1/2/04</li> <li>Area Subject to Inundation</li> <li>Braided Stream Area</li> <li>Claypan</li> <li>Coastal Waterline (cont)</li> </ul> | <ul style="list-style-type: none"> <li>Dam Wall</li> <li>Dam Wall - carrying road</li> <li>Drain - major</li> <li>Drain - minor</li> <li>Earth Dam</li> <li>Estuarine</li> <li>Flood Limit Area</li> <li>Flow Direction Arrow</li> <li>Foreshore Flats or Sandbank</li> <li>Groyne Area</li> <li>Lake - artificial</li> <li>Lake - non-perennial</li> <li>Lake - perennial</li> <li>Levee Bank (cont)</li> </ul> | <ul style="list-style-type: none"> <li>Marine Construction - wharf/jetty</li> <li>Marsh Area</li> <li>Natural Pool - non-perennial</li> <li>Natural Pool - perennial</li> <li>Reef Area</li> <li>Rock Wash Offshore</li> <li>Sump</li> <li>Supply Channel</li> <li>Swamp - non-perennial</li> <li>Swamp - perennial</li> <li>Tidal Flat</li> <li>Wash Area</li> <li>Water Reservoir</li> <li>Watercourse - indefinite (cont)</li> </ul> | <ul style="list-style-type: none"> <li>Watercourse - major, non-perennial</li> <li>Watercourse - major, perennial</li> <li>Watercourse - minor, non-perennial</li> <li>Watercourse - minor, perennial</li> <li>Watercourse Bank - non-perennial</li> <li>Watercourse Bank - perennial</li> <li>Waterfalls</li> <li>Rivers 250K - GA</li> </ul> |
|--|--|---|--|



Geocentric Datum Australia 1994

*Note: the data in this map have not been projected. This may result in geometric distortion or measurement inaccuracies.*

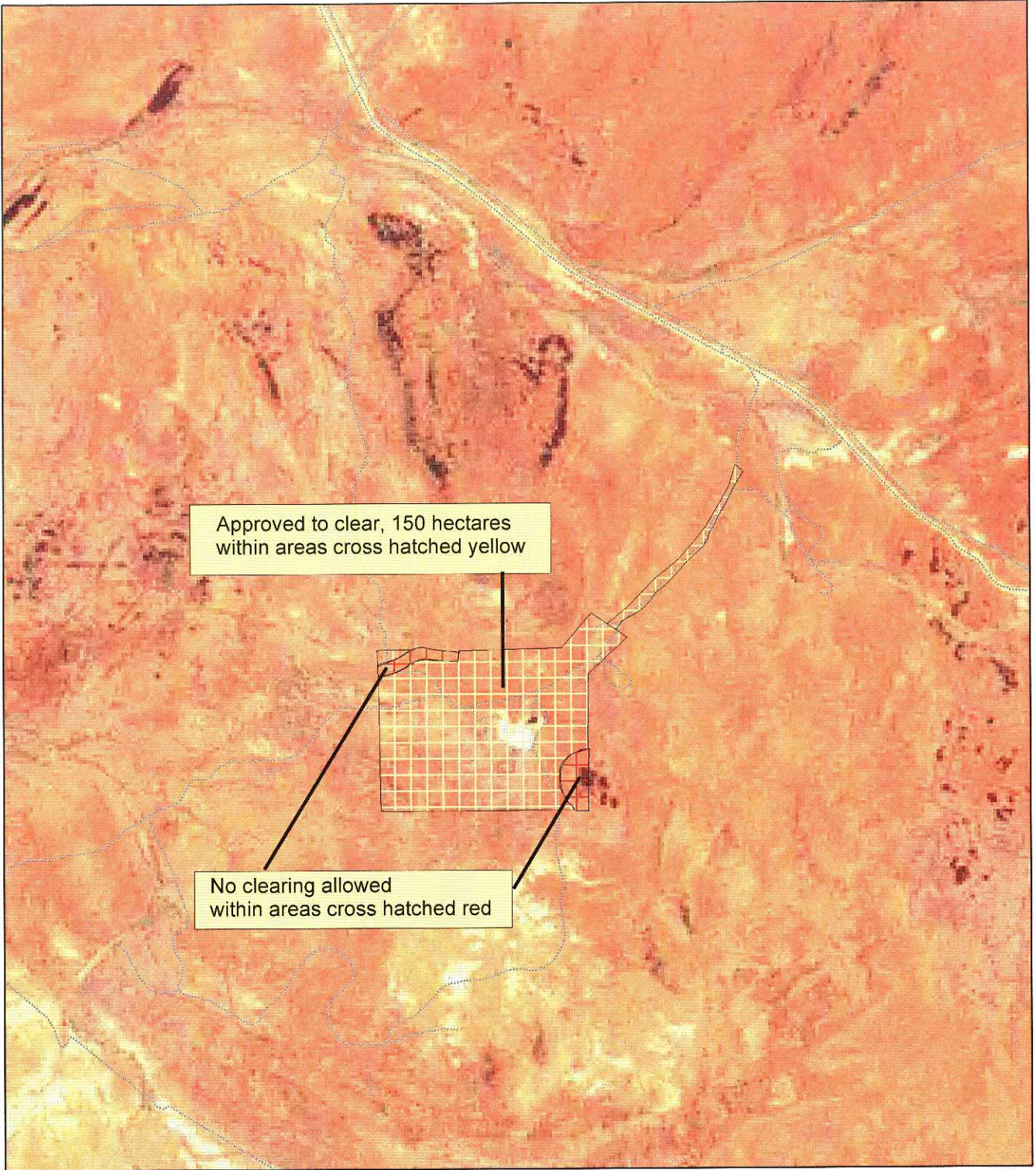
Stuart Smith Date 25/10/06

Officer with delegated authority under Section 20 of the Environmental Protection Act 1986

Information derived from this map should be confirmed with the data custodian acknowledged by the agency acronym in the legend.



# PLAN 771/1

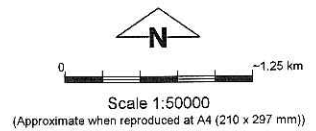


## LEGEND

- Cadastre - DLI 1/12/05
- Road Centrelines - DLI 1/5/04
- ▬ Freeway
- ▬ Highway
- ▬ Local Rd - Other (cont)

- ▬ Local Rd - Sealed
- ▬ Main Road
- ▬ No classification
- ▬ Track
- Clearing Instruments**
- Areas Applied to Clear

- Western Australia ETM 25m 543 - AGO 04
- Clearing Instruments\_1**
- Areas Applied to Clear
- ▨ Areas Subject to Conditions



Geocentric Datum Australia 1994

*Note: the data in this map have not been projected. This may result in geometric distortion or measurement inaccuracies.*

*Stuart Smith*  
Date 25/01/06

Stuart Smith  
Officer with delegated authority under Section 20 of the Environmental Protection Act 1986

Information derived from this map should be confirmed with the data custodian acknowledged by the agency acronym in the legend.



WA Crown Copyright 2002