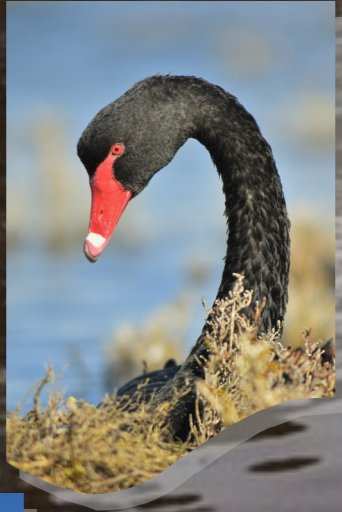


# Proposed Culvert Installation Site

## Meechi Road



Steve Elson

## Hydrological Features, Water bodies and other Catchments Associated with Meechi Road

### Legend

#### Populated Places



#### Ramsar Sites



#### DoE Important Wetlands



#### Local Government Authority



#### State Roads



#### Other Roads



#### Hydrography



#### South Coast Significant Wetlands



#### Lakes, Waterbodies and Reservoirs (Geoscience Australia)

##### Perennial



##### Non-perennial



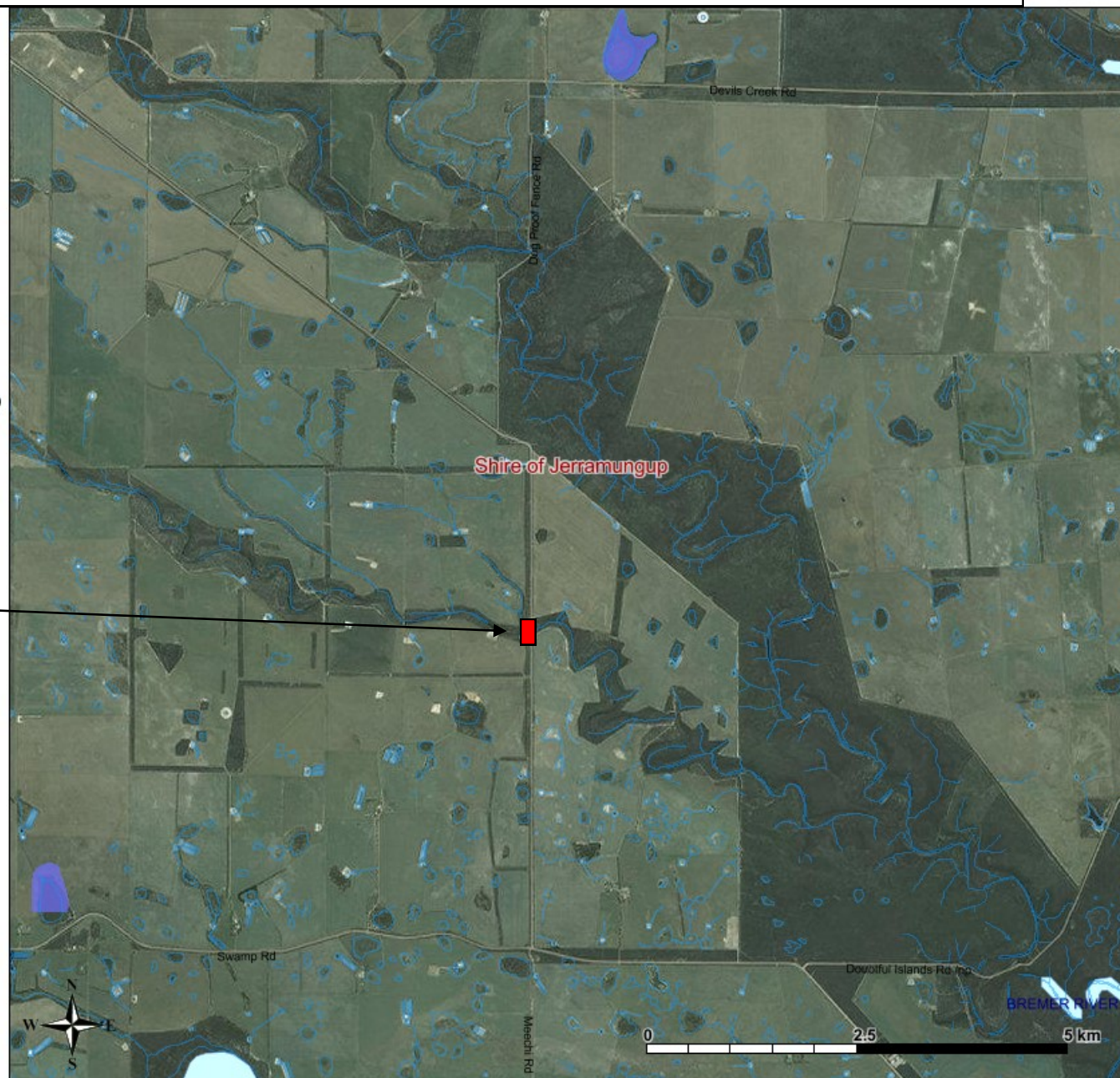
##### Dam or Reservoir



Proposed culvert installation Site along Meechi Road



The project will involve the installation of a culvert and the removal of 9 Yate trees, small shrubs and sedges which are growing in the creek system, also clearing of vegetation through the cut areas on the two crests up to 6m wide.



# Remnant Vegetation Systems Associated with Meechi Road

## Legend

Threatened and Priority Flora



WA Herbarium Records



Threatened and Priority Fauna



Populated Places



Threatened and Priority Ecological Community

Priority

Threatened

Not Evaluated

Local Government Authority



State Roads



Other Roads



Remnant Vegetation by Beard Association Rarity

< 10% remaining in IBRA subregion

10 - 30% remaining in IBRA subregion

30 - 40% remaining in IBRA subregion

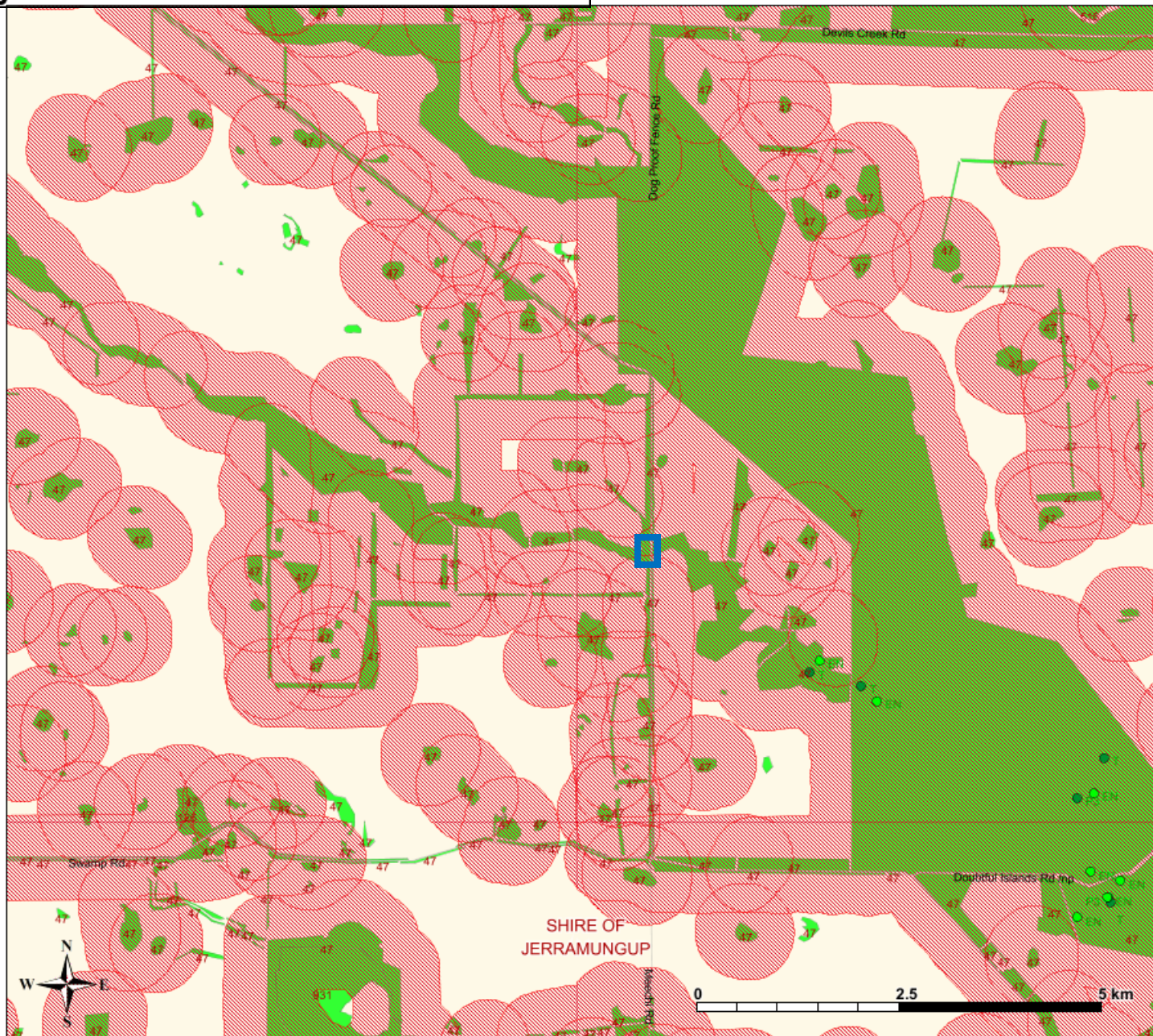
> 40% remaining in IBRA subregion

Coast and Sea

water

land

Proposed culvert Installation Site .

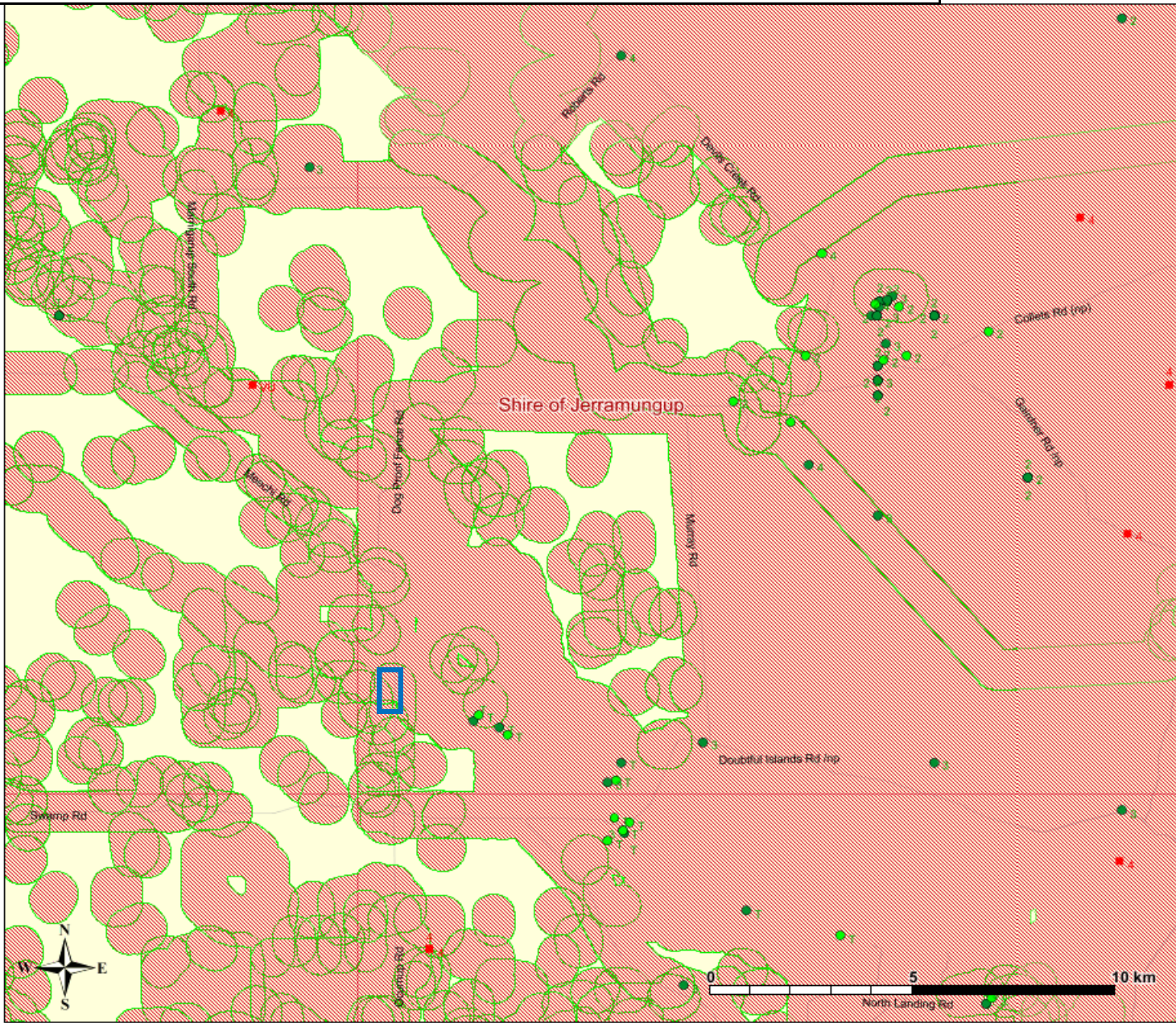


# Threatened and Priority Flora and Fauna locations associated with Meechi Road

## Legend

- Threatened and Priority Flora
  -
- WA Herbarium Records
  -
- Threatened and Priority Fauna
  -
- Populated Places
  -
- Threatened and Priority Ecological Community
  - Priority
  - Threatened
- Local Government Authority
  -
- State Roads
  -
- Other Roads
  -
- Coast and Sea
  - water
  - land

Proposed culvert Installation Site.



The Western section of the Meechi Road creek crossing will require the removal of 3 Yate trees *Eucalyptus occidentalis* and several small shrubs and Sedges



The Eastern section of the Meechi Road creek crossing will require the removal of 6 Yate trees *Eucalyptus occidentalis* and several small shrubs and Sedges.





Red-capped Parrot *Purpureicephalus spurius*

Nesting Hollow 2016 breeding Season Survey.

Fauna Surveys were conducted within and beyond the Riparian Vegetation Zones during September and October 2016 and again in June And July of 2017, the key focus areas were within the immediate Vegetation systems and associated Aquatic systems that may be impacted on resulting from the clearing of Vegetation and the installation of the culvert.

Field Surveys indicated that the 9 Yate trees *Eucalyptus occidentalis* that fall within the required clearing zones supported no significant hollow bearing branches and that only 1 tree supported a small hollow with an active breeding pair of Red-Capped Parrots *Purpureicephalus spurius* ( Breeding Season 2016 ).

In support of the necessary removal of the 9 yate trees the Shire have invested resources in the construction of 20 nesting tubes, with the support of the Jerramungup Senior High School these tubes will be placed in Yate trees across the Shire to target our declining Owl species including Boobook Owl *Ninox novaeseelandiae* subspecies *ocellata*, Eastern Barn Owl *Tyto alba* Subspecies *delicatula*.

These Hollow Tubes will also provide nesting sites for a range of other Fauna including Carnaby's Black Cockatoo *Calyptorhynchus latirostris* and Common Brushtail Possum *Trichosurus vulpecula*.

## Proposed Culvert Installation Site for Meechi Road

### Legend

#### Populated Places

#### Local Government Authority

#### Property Boundaries

#### State Roads

#### Other Roads

#### Hydrography

#### Lakes, Waterbodies and Reservoirs (Geoscience Australia)

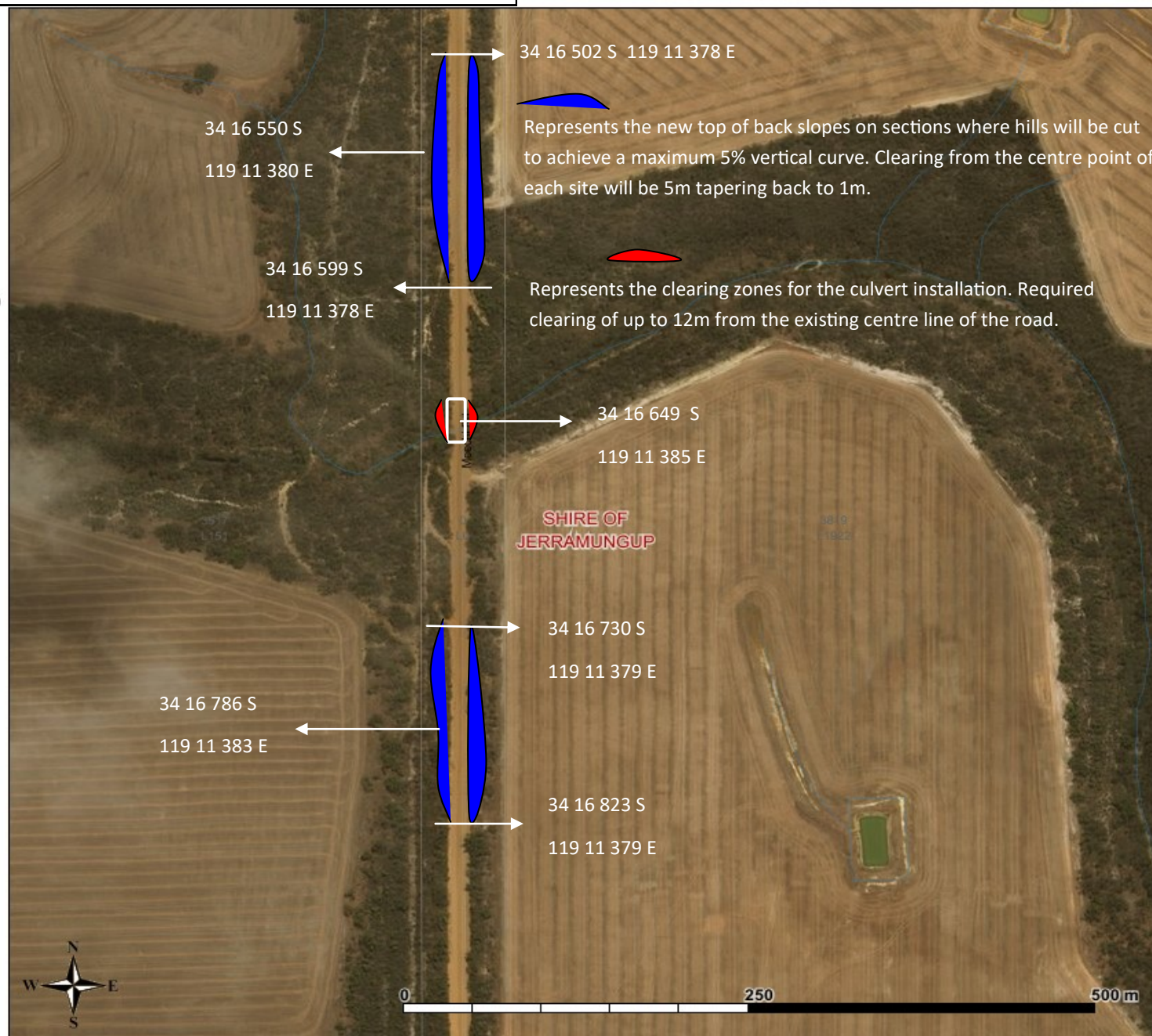
- Perennial
- Non-perennial
- Dam or Reservoir

The proposed installation of the culvert within a small creek crossing along Meechi Road will require the removal of 9 Yate Trees *Eucalyptus occidentalis* and small understorey shrubs consisting mostly of *Melaleuca* species *Acacia cyclops* and sedges.

To install the culvert in the creek crossing, will require clearing of up to 12m at the widest point from the existing centre line of the road.

It should be noted that within the proposed clearing zones on the Western section minor weed infestations were recorded and will be removed during the clearing process.

These works have been referred to DER to obtain a clearing permit.



# Aboriginal Sites and other Heritage Sites Associated with Meechi Road

## Legend

Populated Places



DAA Aboriginal Sites and Other Heritage Places



Local Government Authority



Other Roads



Proposed culvert installation Site





# Meechi North

## Legend

Populated Places



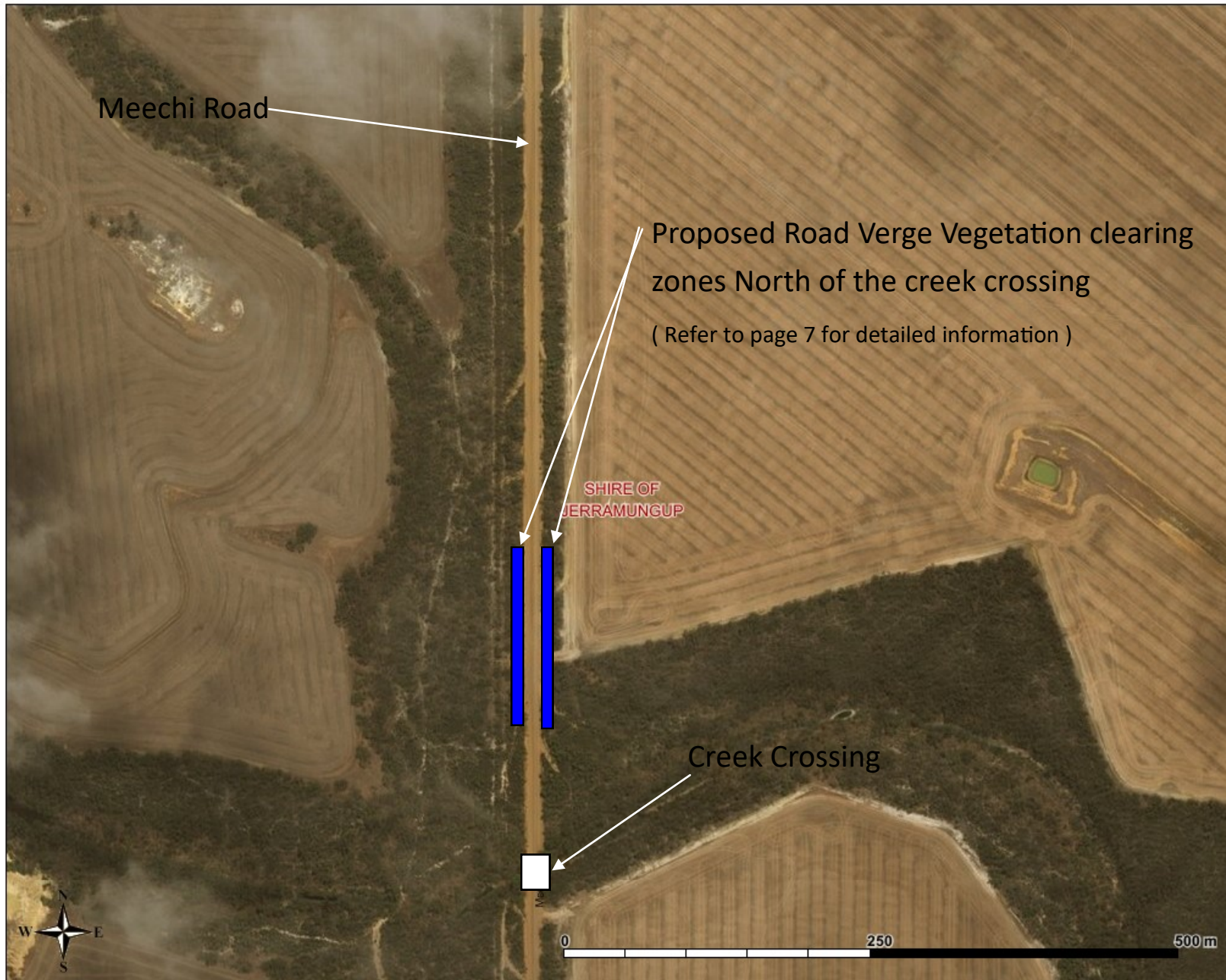
Local Government Authority



State Roads



Other Roads



# Meechi South

## Legend

Populated Places



Local Government Authority



State Roads



Other Roads

