

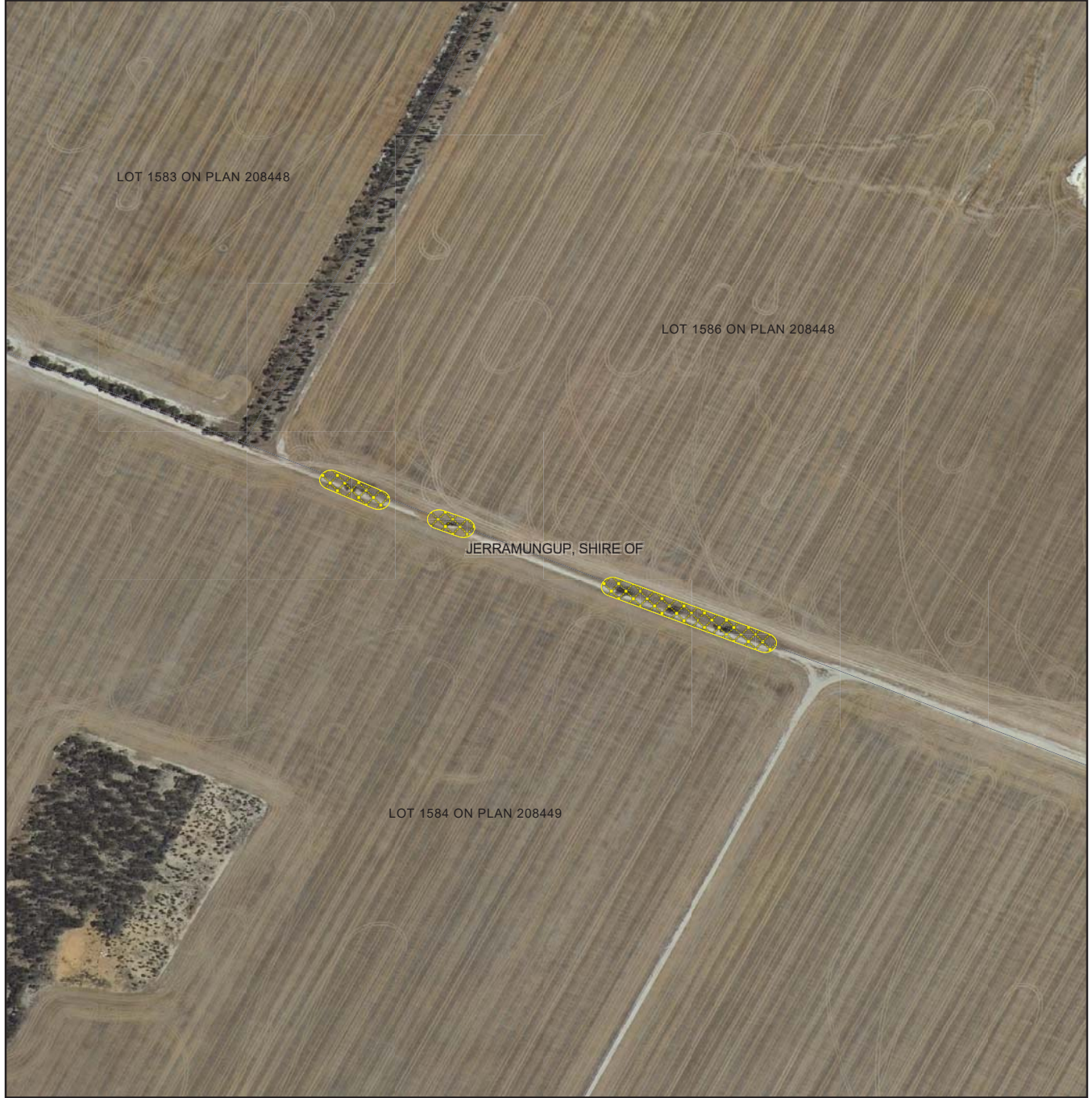
# Plan 7741/1(b)

33.788498°S

33.788498°S

119.059903°E

119.082974°E







119.059903°E

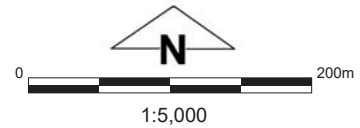
119.082974°E

33.797342°S

33.797342°S

## Legend

-  Roads
-  Imagery
-  Clearing Instruments Activities
-  Local Government Authority



(Approximate when reproduced at A4)  
GDA 94 (Lat/Long)

Geocentric Datum of Australia 1994  
Samara Rogers

*S. Rogers* ..... 2018.10.26 ..... Date .....  
15:20:06 +08'00'

Officer with delegated authority under Section 20 of the Environmental Protection Act 1986

