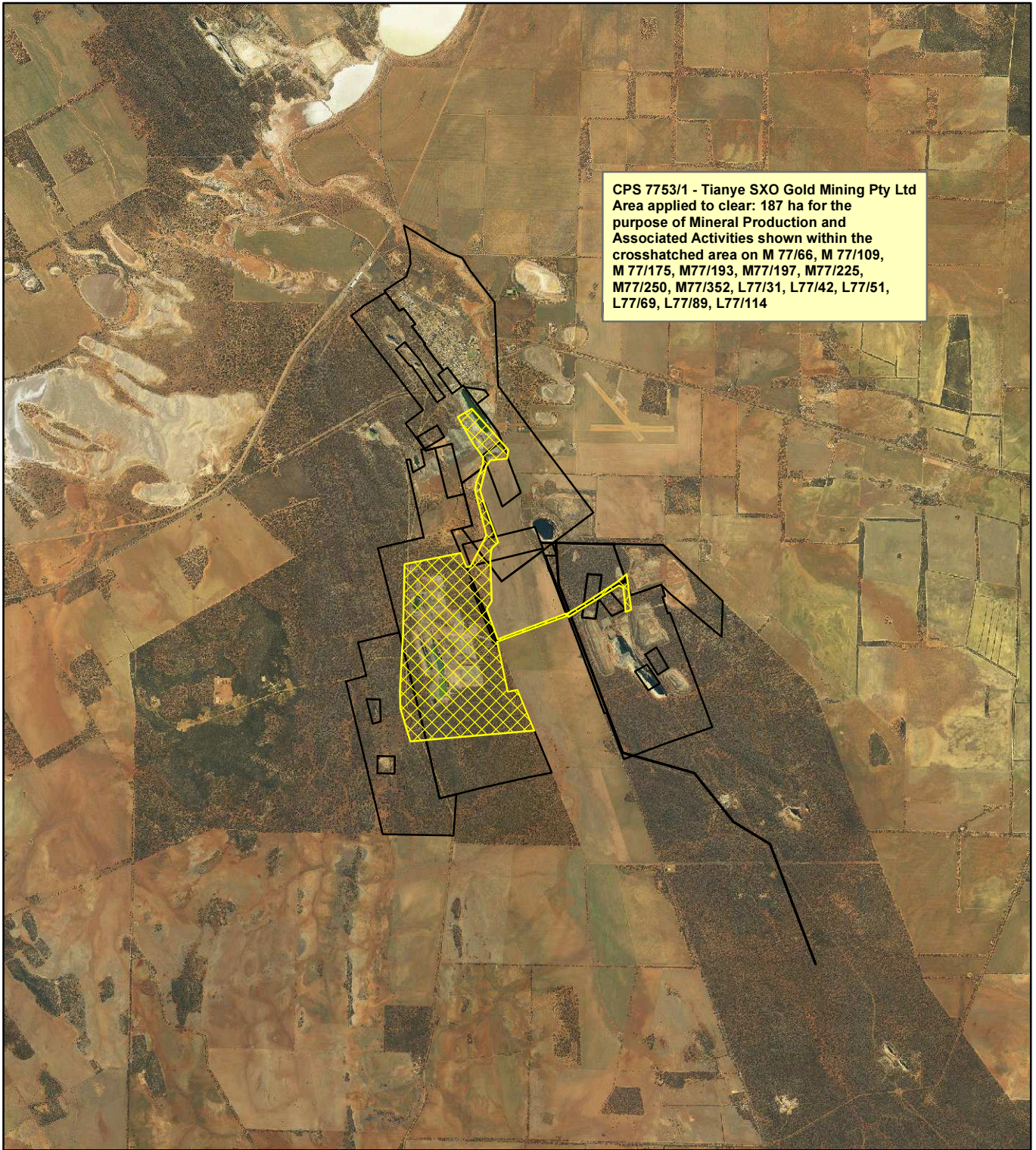


CPS 7753/1 - Tianye SXO Mining Pty Ltd



CPS 7753/1 - Tianye SXO Gold Mining Pty Ltd
 Area applied to clear: 187 ha for the
 purpose of Mineral Production and
 Associated Activities shown within the
 crosshatched area on M 77/66, M 77/109,
 M 77/175, M77/193, M77/197, M77/225,
 M77/250, M77/352, L77/31, L77/42, L77/51,
 L77/69, L77/89, L77/114

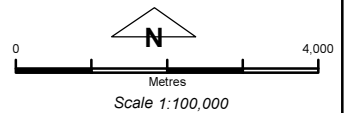
Legend

Clearing Instruments

TENID

- L 7700031
- L 7700042
- L 7700051
- L 7700069
- L 7700089
- L 7700114
- M 7700066
- M 7700109
- M 7700175
- M 7700193
- M 7700197
- M 7700225
- M 7700250
- M 7700352

Virtual Mosaic



Geocentric Datum Australia 1994

Note: the data in this map have not been projected. This may result in geometric distortion or measurement inaccuracies.

..... Date

Officer with delegated authority under Section 20 of the Environmental Protection Act 1986

Information derived from this map should be confirmed with the data custodian acknowledged by the agency acronym in the legend.

