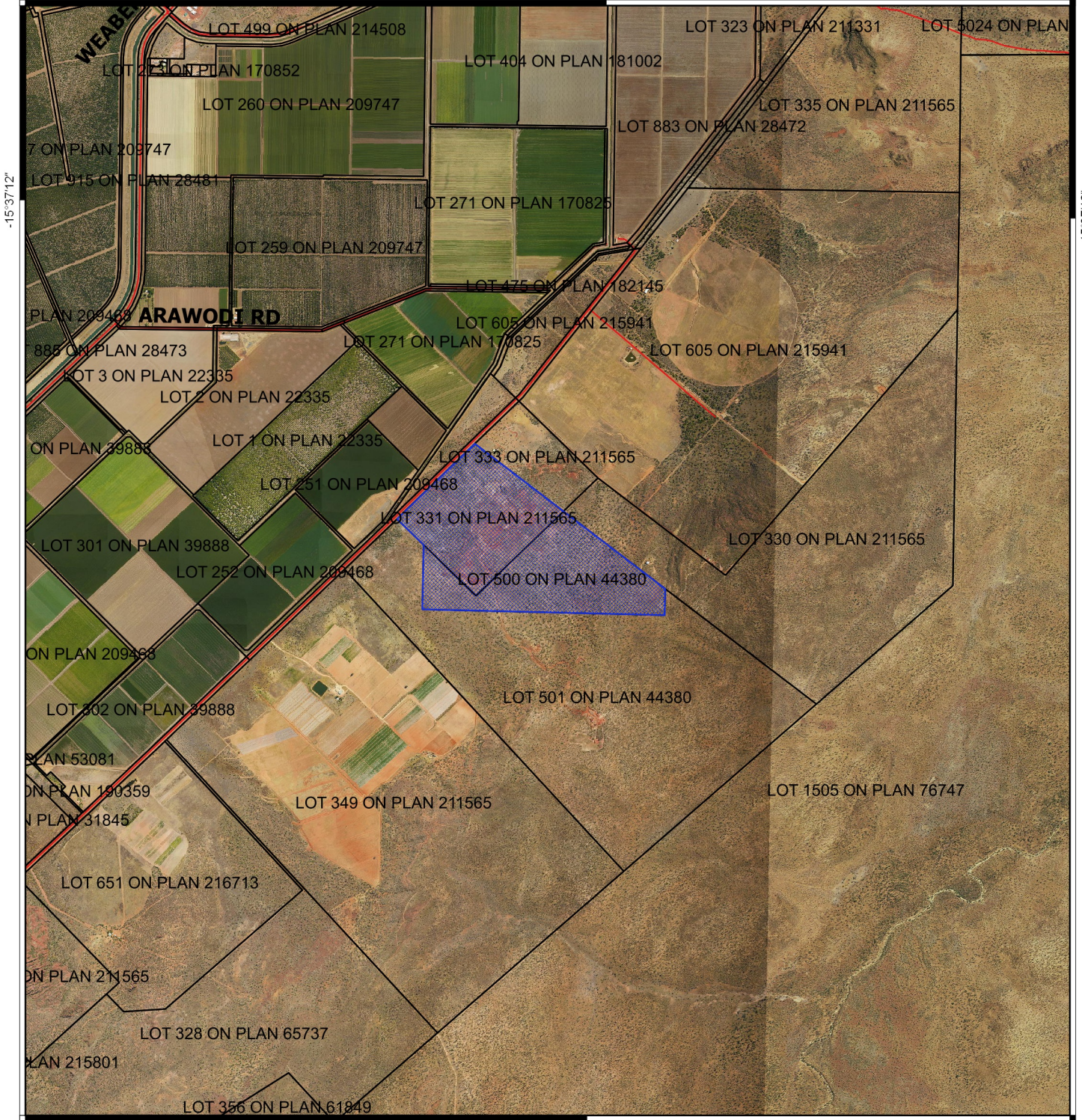



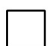


# CPS 7783/1 - Map A

128°48'0"



128°48'0"

## Legend

-  Areas applied to clear
  -  Cadastre
  -  Roads
  -  LGA
- Virtual Mosaic (LGATE-V001)



1:40,000  
MGA 94  
Geocentric Datum of Australia 1994

.....Date.....

Officer with delegated authority under Section 20  
of the Environmental Protection Act 1986



**GOVERNMENT OF  
WESTERN AUSTRALIA**