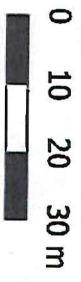


**3 BAYS WALKWAY
CLEARING PERMIT IMAGERY**

SCALE 1:1,000



Concrete access
path
ramp to
hill

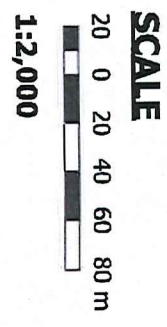
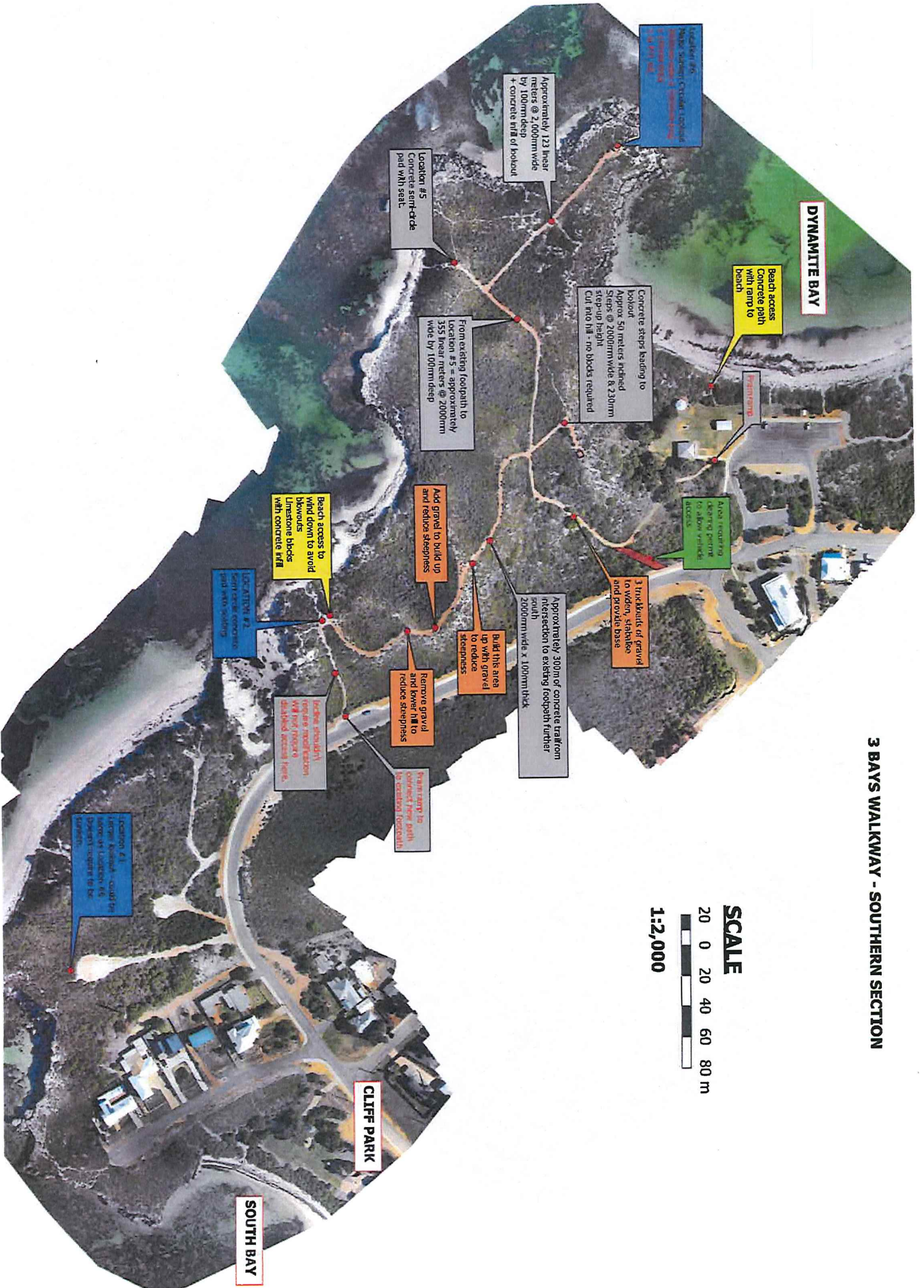
Concrete steps leading to
lookout
Approx 50 meters inclined
Steps @ 2000mm wide & 230mm
step-up height
Concrete hill - no blocks revealed

Area requiring
clearing permit
to allow vehicle
access

3 truckloads of gravel
to widen, stabilise
and provide base

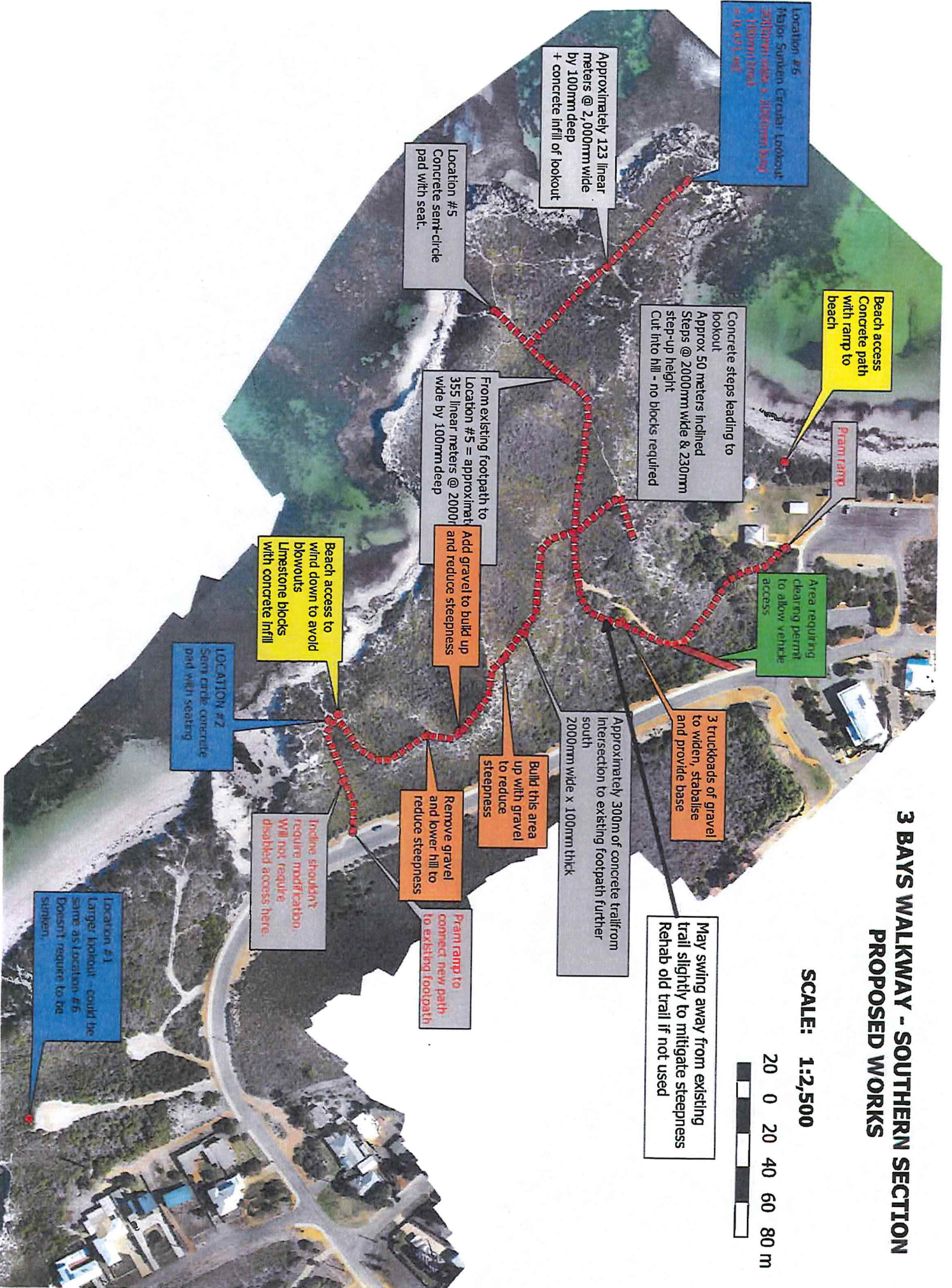
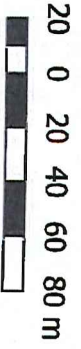
Approximately 300m of concrete trail from
intersection to existing footpath further
south

3 BAYS WALKWAY - SOUTHERN SECTION



3 BAYS WALKWAY - SOUTHERN SECTION PROPOSED WORKS

SCALE: 1:2,500



Location #6
Major Sunken Circular Lookout
2000mm wide x 2000mm deep
+ concrete infill of lookout

Approximately 123 linear
meters @ 2,000mm wide
by 100mm deep
+ concrete infill of lookout

Location #5
Concrete semi-circle
pad with seat.

Beach access
Concrete path
with ramp to
beach

Concrete steps leading to
lookout
Approx. 50 meters inclined
Steps @ 2000mm wide & 230mm
step-up height
Cut into hill - no blocks required

From existing footpath to
Location #5 = approximat
355 linear meters @ 2000
wide by 100mm deep

Area requiring
clearing permit
to allow vehicle
access

Beach access to
wind down to avoid
blowouts
Limestone blocks
with concrete infill

Add gravel to build up
and reduce steepness

LOCATION #2
Semi circle concrete
pad with seating

3 truckloads of gravel
to widen, stabilise
and provide base

Approximately 300m of concrete trail from
Intersection to existing footpath further
south
2000mm wide x 100mm thick

Build this area
up with gravel
to reduce
steepness

Remove gravel
and lower hill to
reduce steepness

Incline shouldn't
require mudflats
Will not require
disabled access here

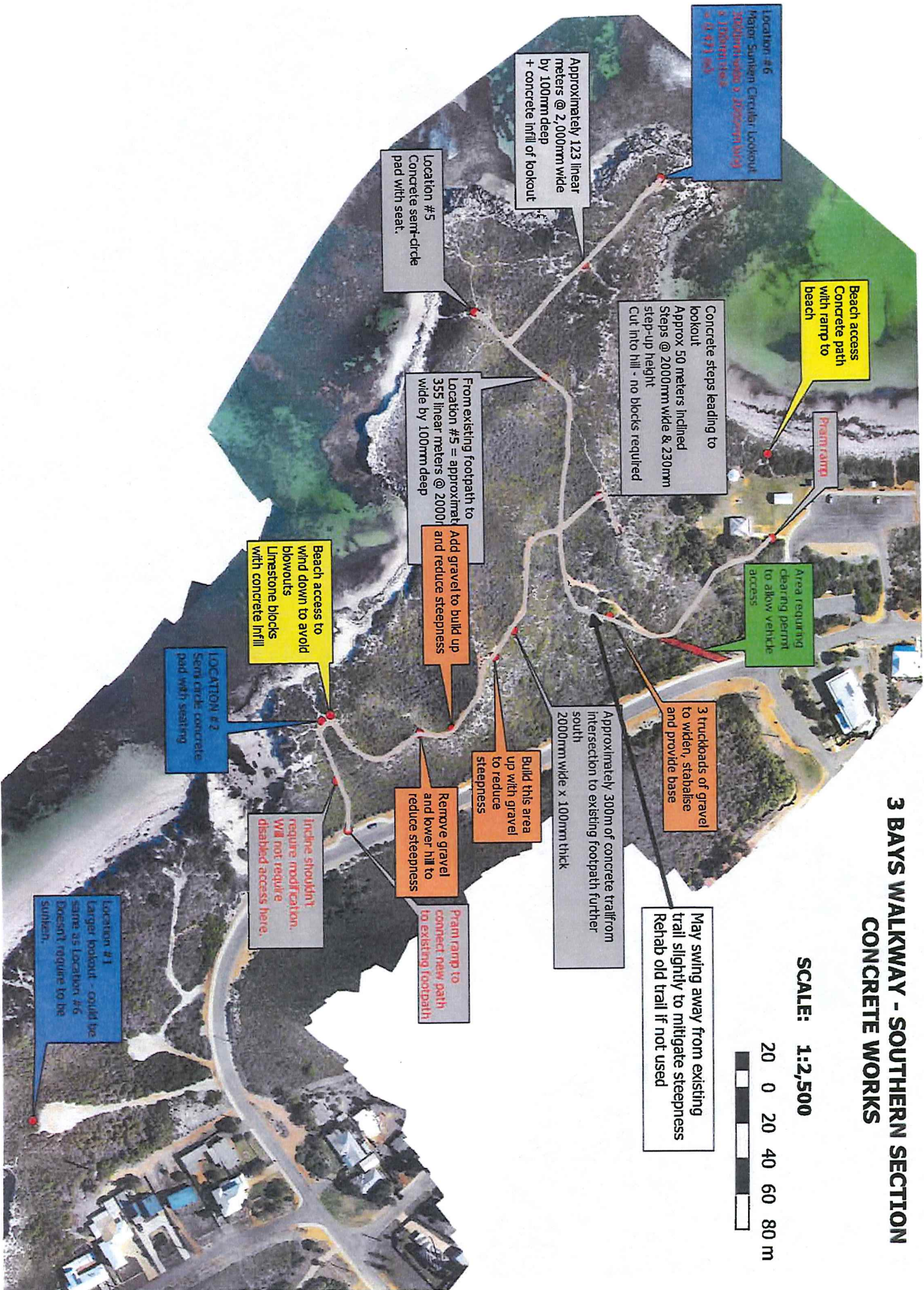
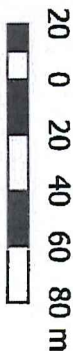
May swing away from existing
trail slightly to mitigate steepness
Rehab old trail if not used

Pram ramp to
connect new path
to existing footpath

Location #1
Larger lookout - could be
same as Location #6
Doesn't require to be
sunken

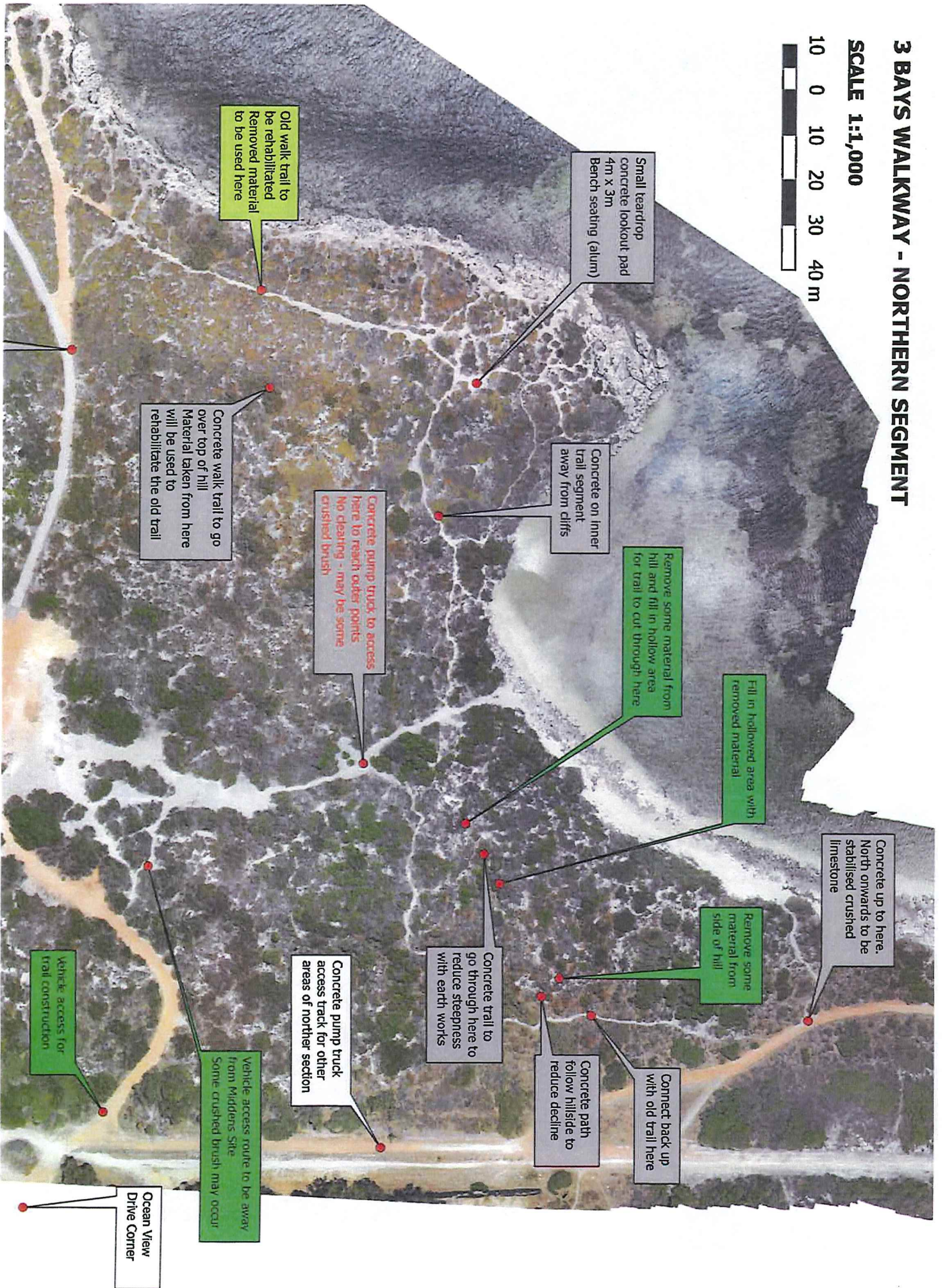
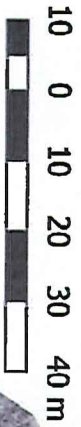
3 BAYS WALKWAY - SOUTHERN SECTION CONCRETE WORKS

SCALE: 1:2,500



3 BAYS WALKWAY - NORTHERN SEGMENT

SCALE 1:1,000



Small teardrop concrete lookout pad 4m x 3m Bench seating (alum)

Concrete on inner trail segment away from cliffs

Remove some material from hill and fill in hollow area for trail to cut through here

Fill in hollowed area with removed material

Concrete up to here. North onwards to be stabilised crushed limestone

Remove some material from side of hill

Concrete trail to go through here to reduce steepness with earth works

Concrete path follow hillside to reduce decline

Connect back up with old trail here

Concrete pump truck access track for other areas of northern section

Vehicle access route to be away from Middlers Site. Some crushed brush may occur

Ocean View Drive Corner

Vehicle access for trail construction

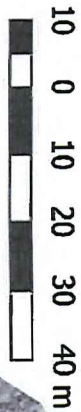
Concrete pump truck to access here to reach outer points. No clearing - may be some crushed brush

Concrete walk trail to go over top of hill. Material taken from here will be used to rehabilitate the old trail

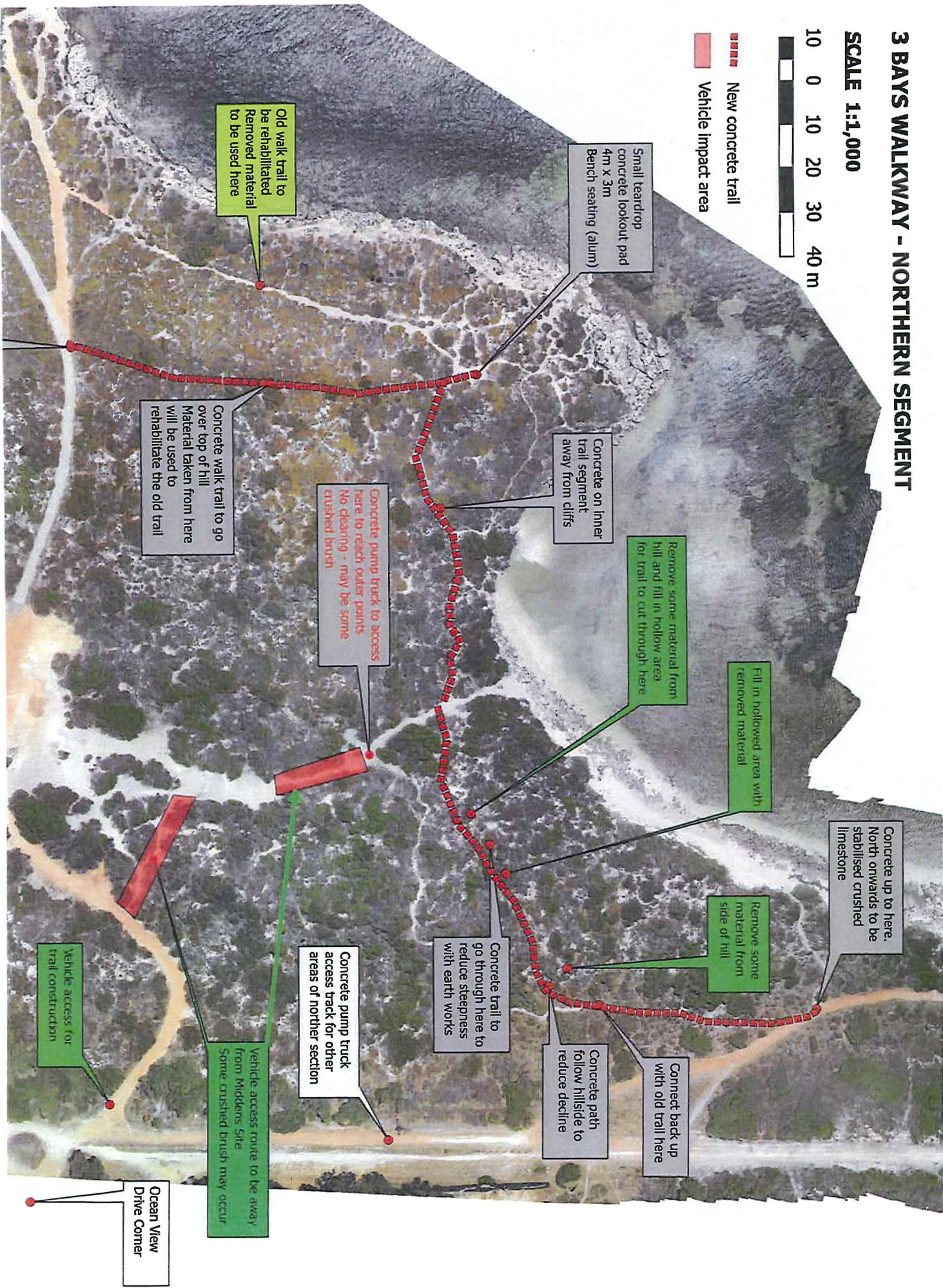
Old walk trail to be rehabilitated. Removed material to be used here

3 BAYS WALKWAY - NORTHERN SEGMENT

SCALE 1:1,000



- New concrete trail
- Vehicle impact area



Small teardrop concrete lookout pad
4m X 3m
Bench seating (alum)

Old walk trail to be rehabilitated
Removed material to be used here

Concrete on inner trail segment away from cliffs

Remove some material from hill and fill in hollow area for trail to cut through here

Fill in hollowed area with removed material

Concrete walk trail to go over top of hill
Material taken from here will be used to rehabilitate the old trail

Concrete pump truck to access here to reach outer points
No clearing - may be some crushed brush

Concrete up to here. North onwards to be stabilised crushed limestone

Remove some material from side of hill

Concrete trail to go through here to reduce steepness with earth works

Concrete path follow hillside to reduce decline

Connect back up with old trail here

Concrete pump truck access track for other areas of norther section

Vehicle access route to be away from Middens Site
Some crushed brush may occur

Vehicle access for trail construction

Ocean View Drive Corner

3 BAYS WALKWAY - NORTHERN SEGMENT

SCALE 1:1,000

10 0 10 20 30 40 m



Proposed concrete trail

Vehicle impact area

