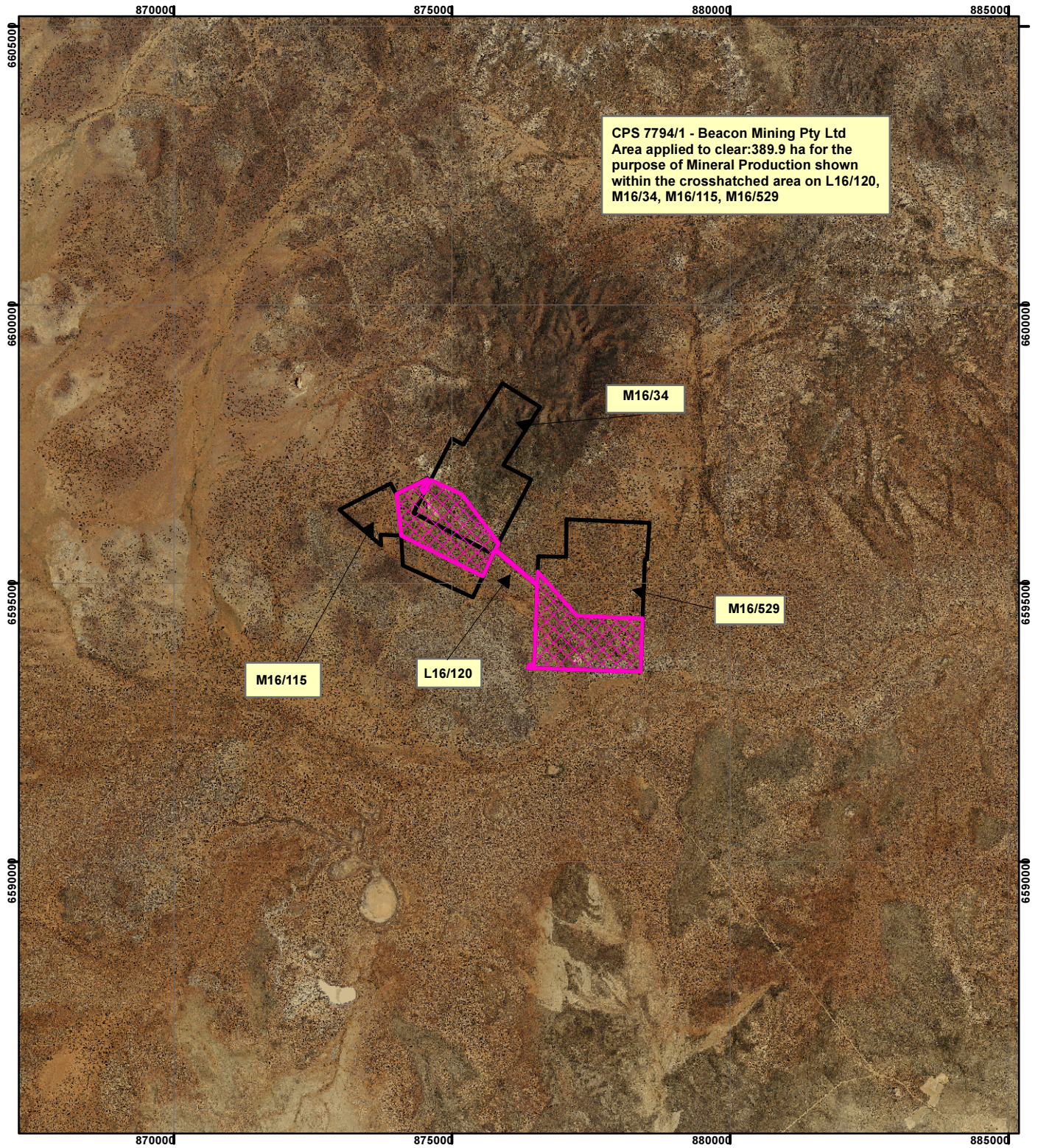


CPS 7794/1 - Beacon Mining Pty Ltd



CPS 7794/1 - Beacon Mining Pty Ltd
 Area applied to clear: 389.9 ha for the purpose of Mineral Production shown within the crosshatched area on L16/120, M16/34, M16/115, M16/529


M16/115

L16/120


M16/34


M16/529


Legend


 Clearing Instruments

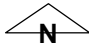
TENID

 L 1600120

 M 1600034

 M 1600115

 M 1600529



0 4,000
Metres
Scale 1:100,000

Geocentric Datum Australia 1994
 Note: the data in this map have not been projected. This may result in geometric distortion or measurement inaccuracies.

..... Date

Officer with delegated authority under Section 20 of the Environmental Protection Act 1986

Information derived from this map should be confirmed with the data custodian acknowledged by the agency acronym in the legend.

