

Approved by Council
20 DEC 2016

OVERALL SITE PLAN LAYOUT
SCALE 1:1000

Drawing Title: **OVERALL SITE PLAN LAYOUT**

Drawing No: **P0583-P3**

Revision: **01**

FOR APPROVAL

Project: **MOBILE NETWORK AUSTRALIA**
SITE No: **P0583 - B**
PINK LAKE
75 VALLEY RD

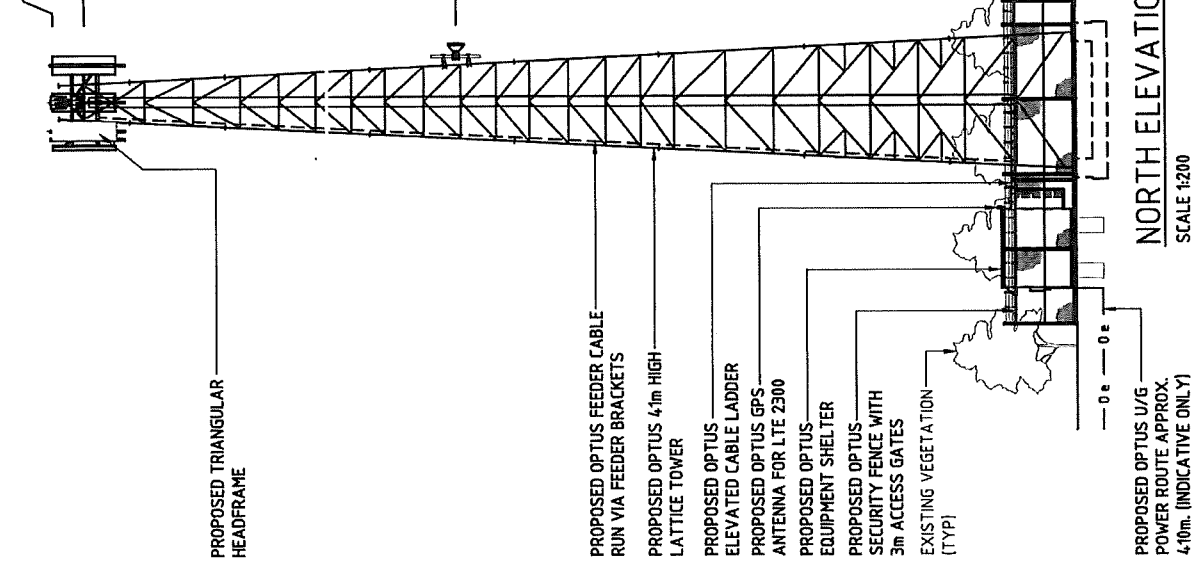
Client: **OPTUS**

HUAWEI TECHNOLOGIES (AU) PTY LTD
100 COLLEGE STREET, SYDNEY NSW 1587
TEL: +61 2 9002 9200 FAX: +61 2 9002 9201
HUAWEI MOBILE NETWORKS AUSTRALIA PTY LTD
100 COLLEGE STREET, SYDNEY NSW 1587
TEL: +61 2 9002 9200 FAX: +61 2 9002 9201

Rev	Date	Issued For Approval	DALY Consultant	BRS	MI	D	IPM	Apprver
01	19/10/2016	ISSUED FOR APPROVAL						

NOTE:
THIS DRAWING IS DIAGRAMMATIC ONLY
AND SHOULD NOT BE SCALED.

- ▽ EL. 41.30m (MAX.)
TOP OF PROPOSED OPTUS PANEL ANTENNAS
- ▽ EL. 4.000m
 - ⊕ PROPOSED OPTUS PANEL ANTENNAS (3 OFF)
 - ⊕ PROPOSED OPTUS RRUS (18 OFF)
 - ⊕ PROPOSED OPTUS COMBINER (3 OFF)
 - ⊕ FUTURE OPTUS PANEL ANTENNAS (3 OFF)
 - ⊕ FUTURE OPTUS COMBINERS (3 OFF)
 - ⊕ FUTURE OPTUS MHAS (6 OFF)
- ▽ EL. 25.00m
 - ⊕ PROPOSED OPTUS φ600 PARABOLIC ANTENNA (1 OFF)



NORTH ELEVATION
SCALE 1:200

PROPOSED TRIANGULAR
HEADFRAME

PROPOSED OPTUS FEEDER CABLE
RUN VIA FEEDER BRACKETS

PROPOSED OPTUS 4.1m HIGH
LATTICE TOWER

PROPOSED OPTUS
ELEVATED CABLE LADDER

PROPOSED OPTUS GPS
ANTENNA FOR LTE 2300

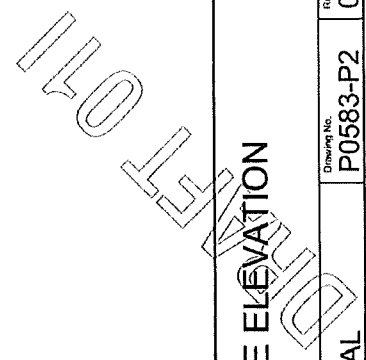
PROPOSED OPTUS
EQUIPMENT SHELTER

PROPOSED OPTUS
SECURITY FENCE WITH
3m ACCESS GATES

EXISTING VEGETATION
(TYP)

PROPOSED OPTUS U/G
POWER ROUTE APPROX.
4.10m. (INDICATIVE ONLY)

Approved by Council
20 DEC 2016



Project: MOBILE NETWORK
AUSTRALIA
SITE No:- P0583 - B
PINK LAKE
75 VALLEY RD

Client:
OPTUS

HUAWEI TECHNOLOGIES (AU) PTY LTD
 1500 ANZAC STREET
 SYDNEY NSW 2000
 AUSTRALIA
 TEL: +61 2 9720 2000 FAX: +61 2 9720 1111
 HUAWEI OPTUS NETWORKS
 1500 ANZAC STREET
 SYDNEY NSW 2000
 AUSTRALIA
 TEL: +61 2 9720 2000 FAX: +61 2 9720 1111

Rev	Date	Issue	By	Check	Appr
01	04/11/16	ISSUED FOR APPROVAL			

Copyright © OPTUS MOBILES PTY LTD. ASN G3 644 316 00%. ALL RIGHTS RESERVED. VERSION 2.0 NOVEMBER 2013

Drawing Title:	DRAFT SITE ELEVATION				
Drawing No.:	P0583-P2				
Revision:	0	10	20	30	40
Revision:					01
Drawing Status:	FOR APPROVAL				
Scale:	A3				