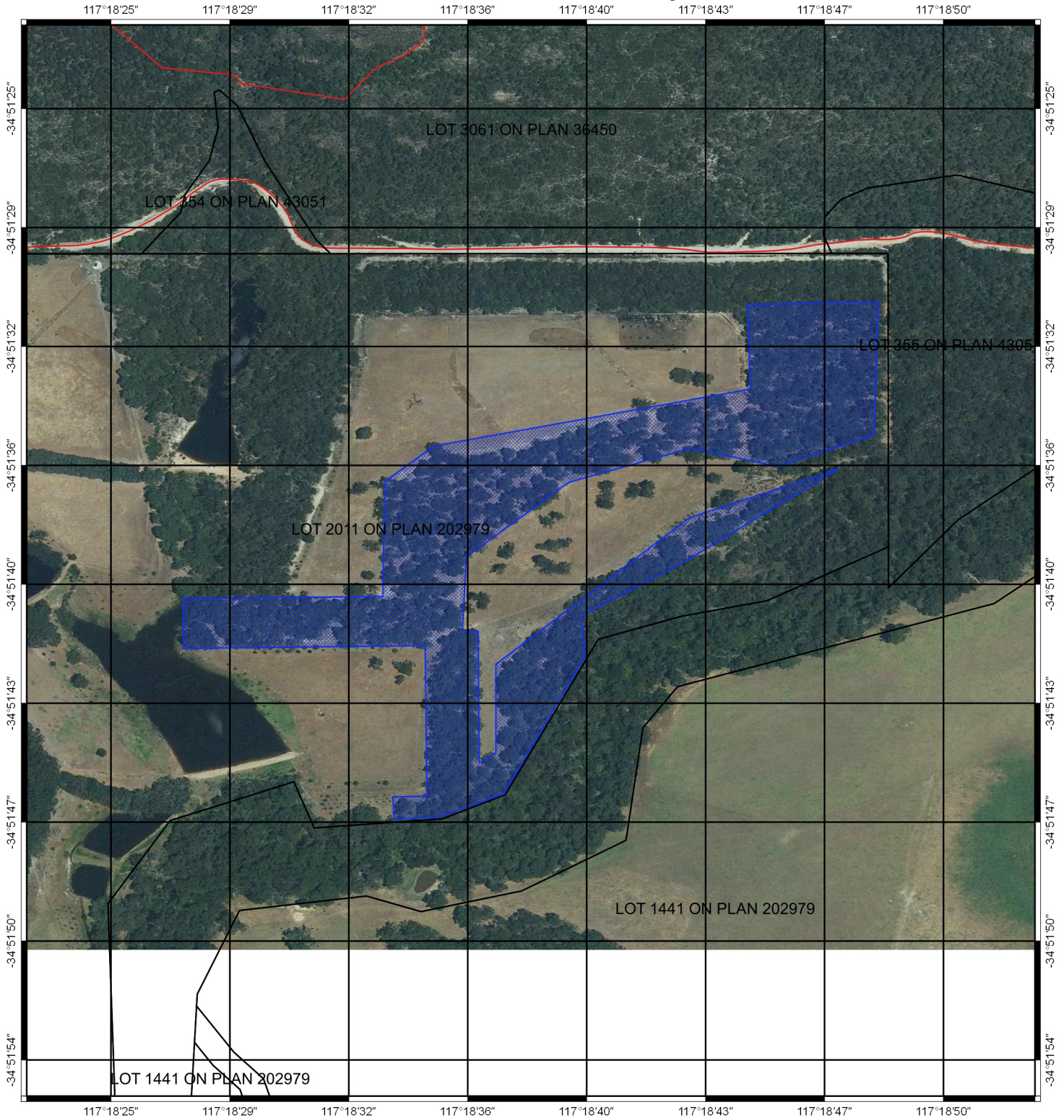


# CPS 7838/1 - Map



## Legend

 Areas applied to clear

 Cadastre

 Roads

2017 Mosaics

Virtual Mosaic (LGATE-V001)



1:3,132  
MGA 94  
Geocentric Datum of Australia 1994

.....Date.....

Officer with delegated authority under Section 20  
of the Environmental Protection Act 1986



**GOVERNMENT OF  
WESTERN AUSTRALIA**