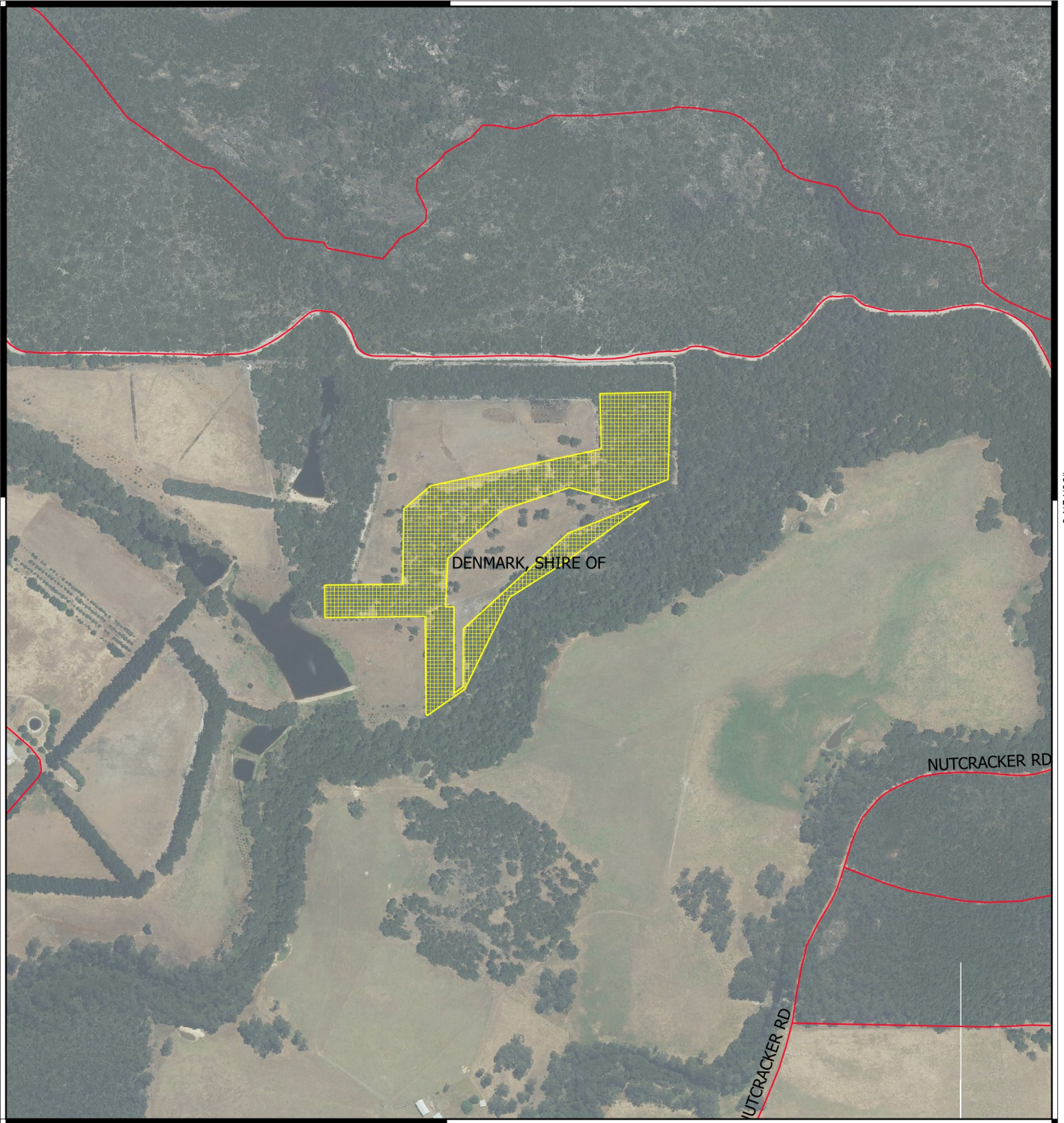


CPS 7838/2 Map

117°18'36"


-34°51'36"

-34°51'36"



117°18'36"

Legend

 CPS areas approved to clear
base layers

 roads

 Local Government Authority

Virtual Mosaic - WA Now



300

0

300 m



MGA 94
Geocentric Datum of Australia 1994

Date.....

Officer with delegated authority under Section 20
of the Environmental Protection Act 1986



GOVERNMENT OF
WESTERN AUSTRALIA