

CPS 7867/1 - Map

116°6'0.000"

116°9'0.000"

-31°39'0.000"

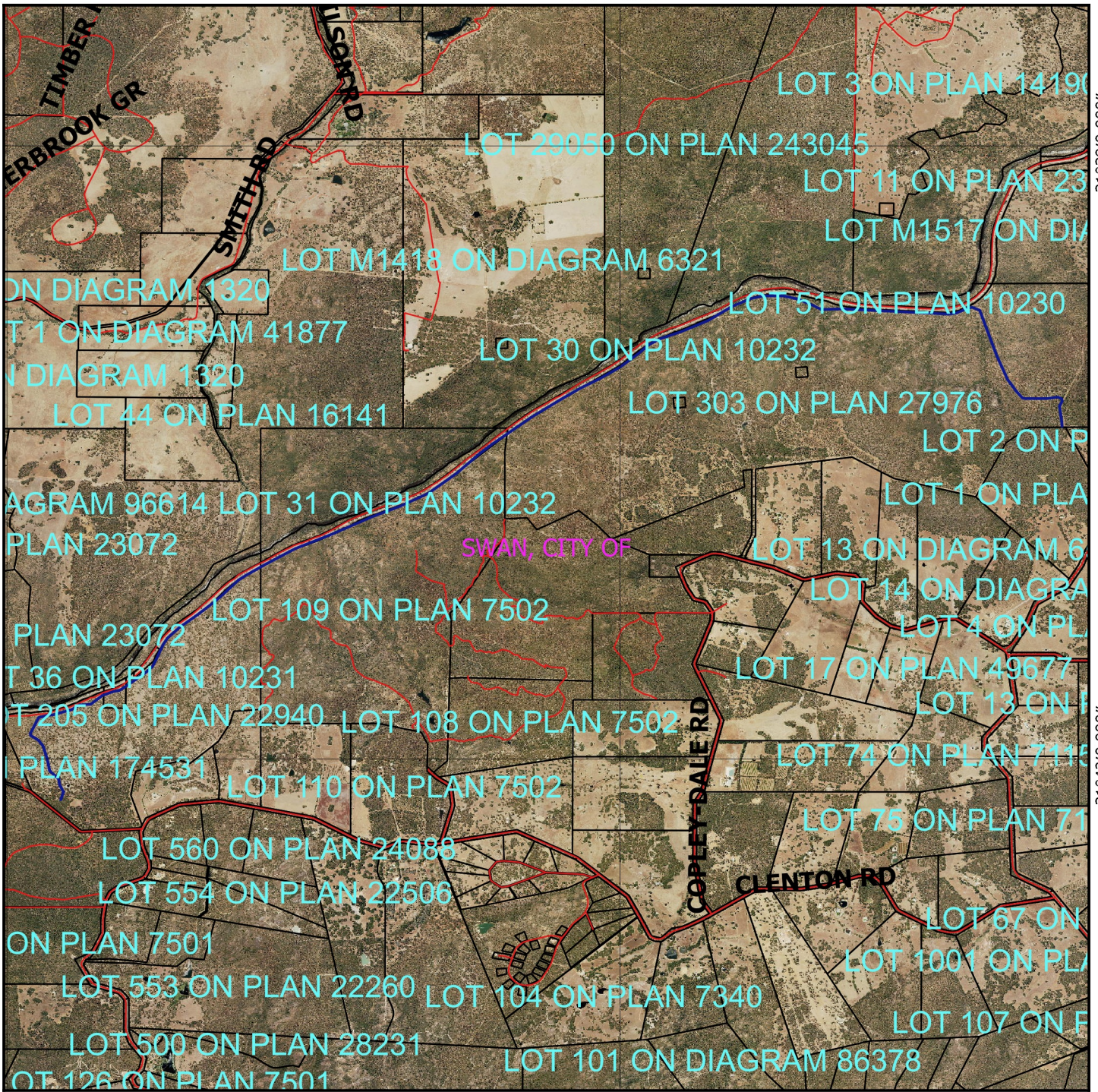
-31°39'0.000"

-31°42'0.000"

-31°42'0.000"

116°6'0.000"

116°9'0.000"



Legend

- Clearing Instruments Proposal
- Roads
- LGA
- Cadastre
- Virtual Mosaic
-



1:33,649

MGA 94
Geocentric Datum of Australia 1994

.....Date.....

Officer with delegated authority under Section 20
of the Environmental Protection Act 1986

