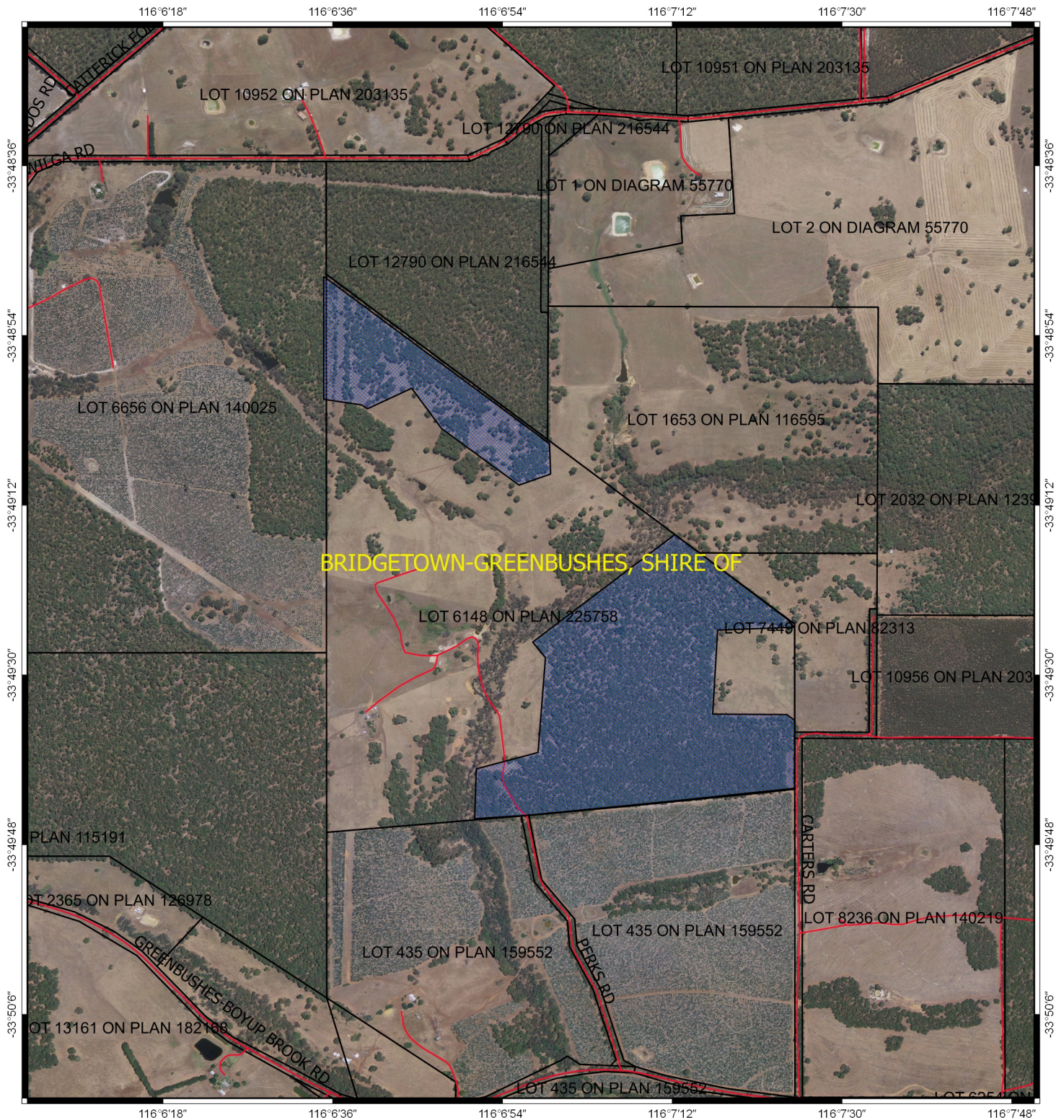


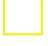





# CPS 7868/1 - Map



## Legend

-  Areas applied to clear
-  roads\_201501131816
-  lga\_201501131742
-  cadastre
-  Cadastre
-  WANow\_Imagery

800



800 m

MGA 94  
Geocentric Datum of Australia 1994

.....Date.....

Officer with delegated authority under Section 20  
of the Environmental Protection Act 1986



GOVERNMENT OF  
WESTERN AUSTRALIA