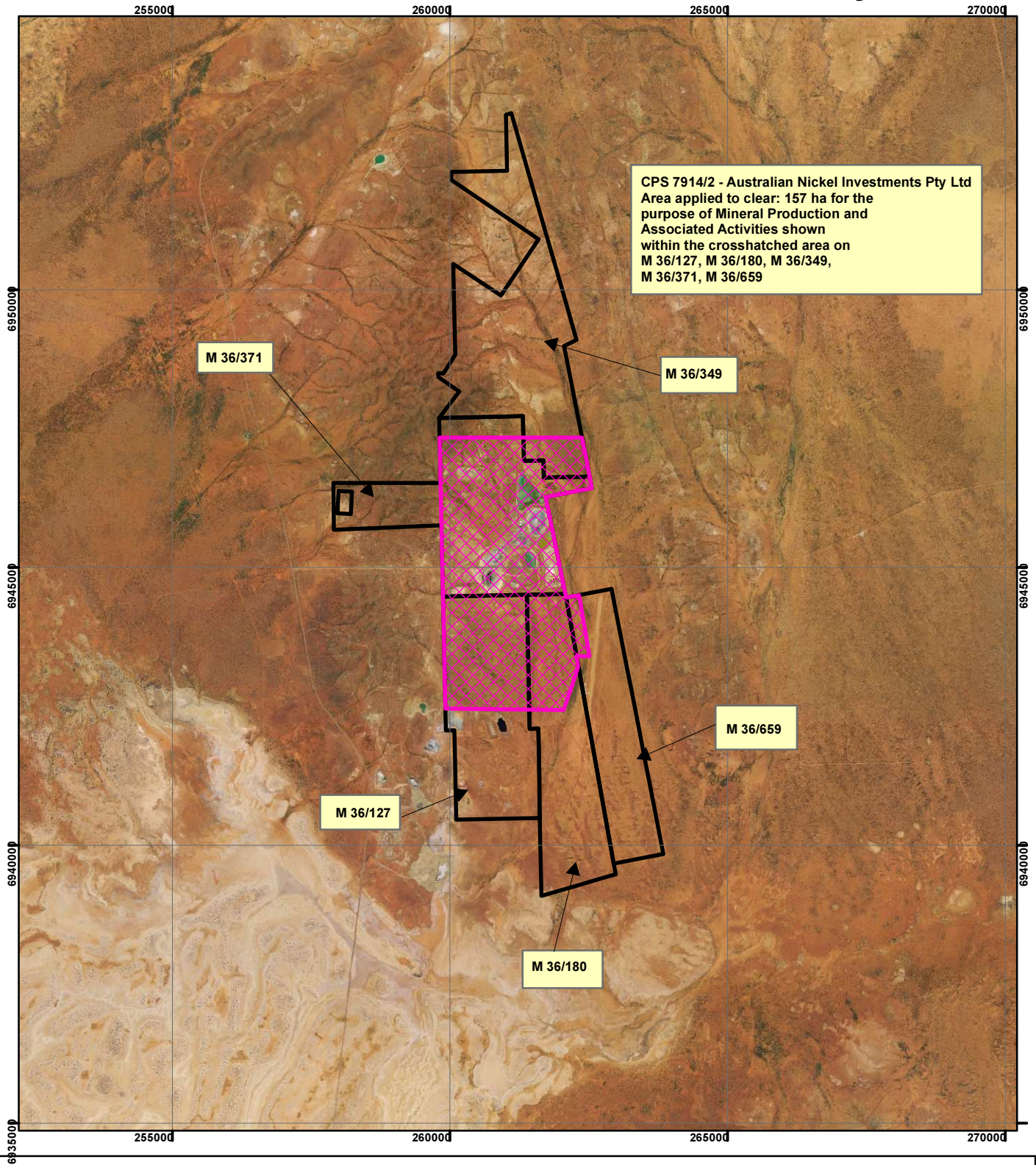


# CPS 7914/2 - Australian Nickel Investments Pty Ltd



CPS 7914/2 - Australian Nickel Investments Pty Ltd  
 Area applied to clear: 157 ha for the  
 purpose of Mineral Production and  
 Associated Activities shown  
 within the crosshatched area on  
 M 36/127, M 36/180, M 36/349,  
 M 36/371, M 36/659

M 36/371

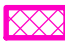
M 36/349

M 36/659






M 36/127

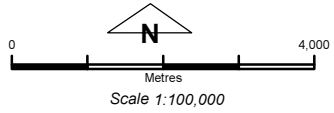
M 36/180

## Legend

 Clearing Instruments

### TENID

-  M 3600659
-  M 3600371
-  M 3600349
-  M 3600180
-  M 3600127



Geocentric Datum Australia 1994  
 Note: the data in this map have not been  
 projected. This may result in geometric  
 distortion or measurement inaccuracies.

..... Date .....

Officer with delegated authority under Section 20 of  
 the Environmental Protection Act 1986

Information derived from this map should be  
 confirmed with the data custodian acknowledged  
 by the agency acronym in the legend.

