

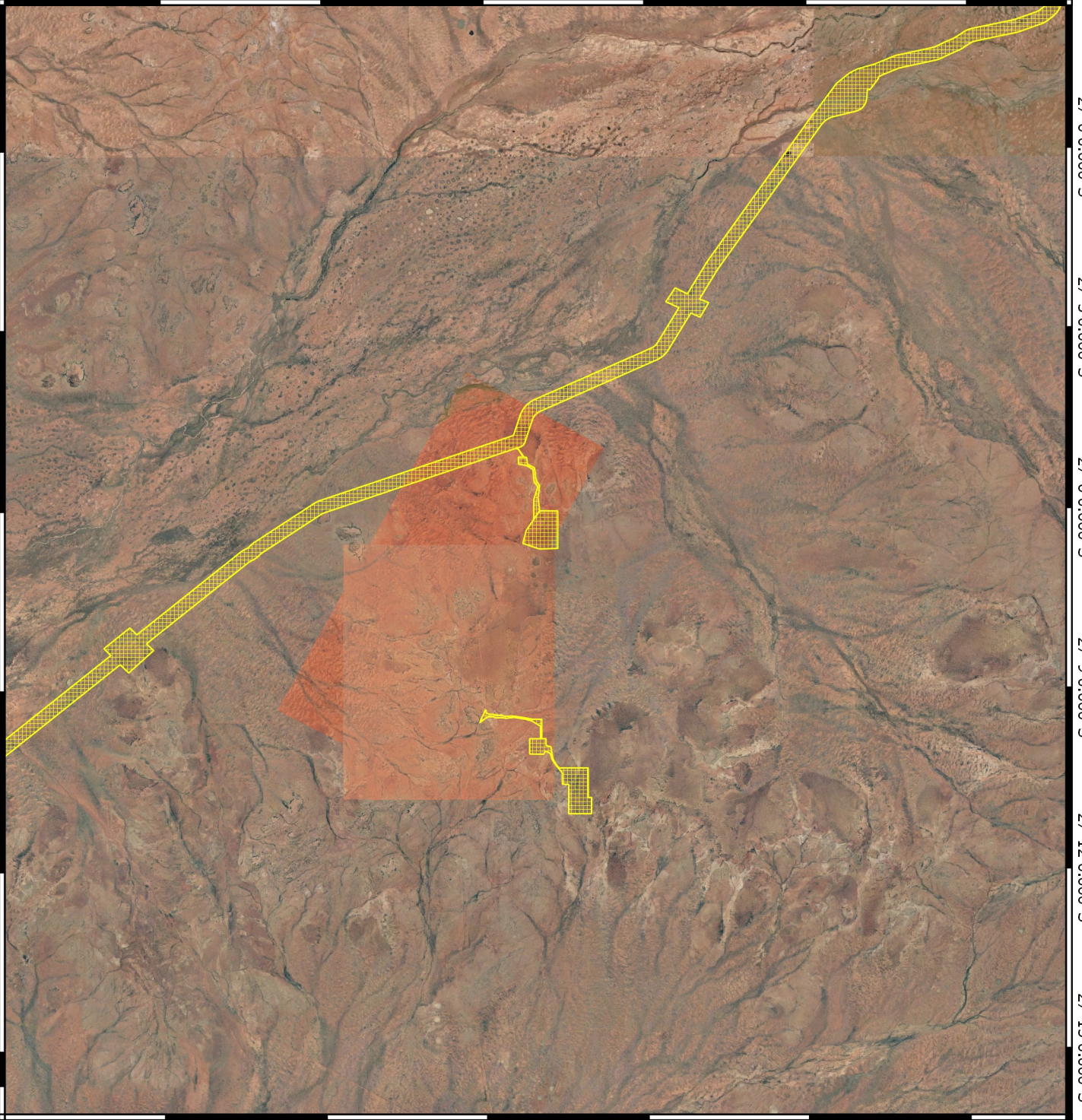
Draft Plan 7916/2(c)

116°18'0.000"E 116°21'0.000"E 116°24'0.000"E 116°27'0.000"E 116°30'0.000"E 116°33'0.000"E


27°0'0.000"S
27°3'0.000"S
27°6'0.000"S
27°9'0.000"S
27°12'0.000"S
27°15'0.000"S

27°0'0.000"S
27°3'0.000"S
27°6'0.000"S
27°9'0.000"S
27°12'0.000"S
27°15'0.000"S

116°15'0.000"E 116°18'0.000"E 116°21'0.000"E 116°24'0.000"E 116°27'0.000"E 116°30'0.000"E 116°33'0.000"E



Legend

-  CPS areas approved to clear
- Image



0 2.5 5 7.5 10 km



MGA 94
Geocentric Datum of Australia 1994

Officer with delegated authority under Section 20
of the Environmental Protection Act 1986



GOVERNMENT OF
WESTERN AUSTRALIA
WA Crown Copyright 2018